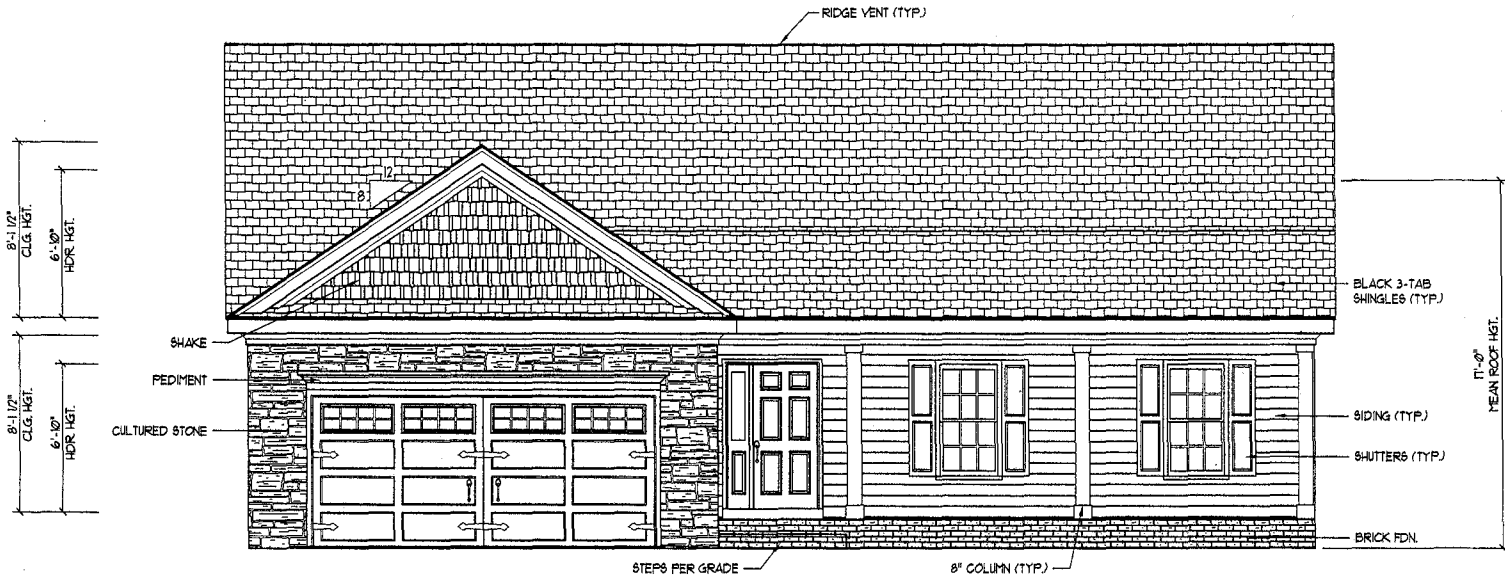


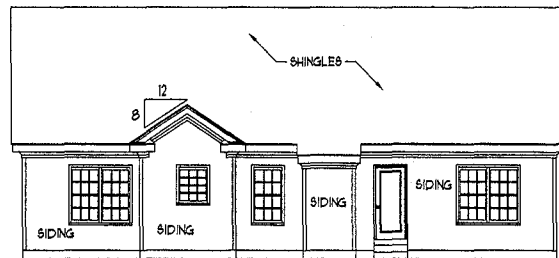
CL 2277 (SOUTHPORT) (GARAGE ON LEFT)

E:\CAD Drawings\RES-ENG\Caviness Land\CL 2277\CL 2277_11-07.dwg, 11/25/2008 9:29:42 AM

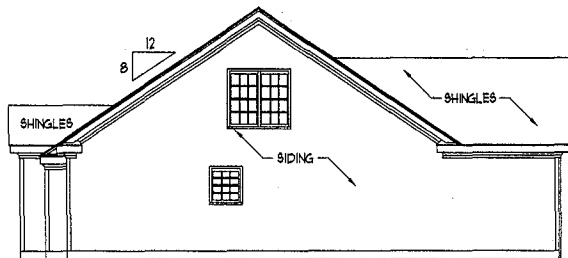


FRONT ELEVATION

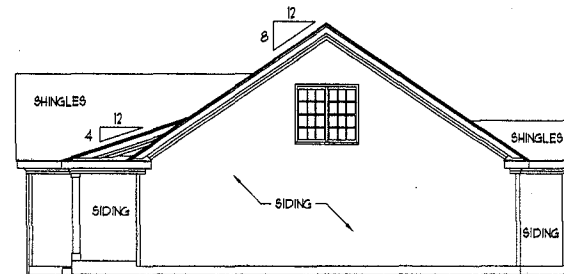
SCALE: 1/4" = 1'-0"



REAR ELEVATION
SCALE: 1/8" = 1'-0"



LEFT ELEVATION
SCALE: 1/8" = 1'-0"



RIGHT ELEVATION
SCALE: 1/8" = 1'-0"

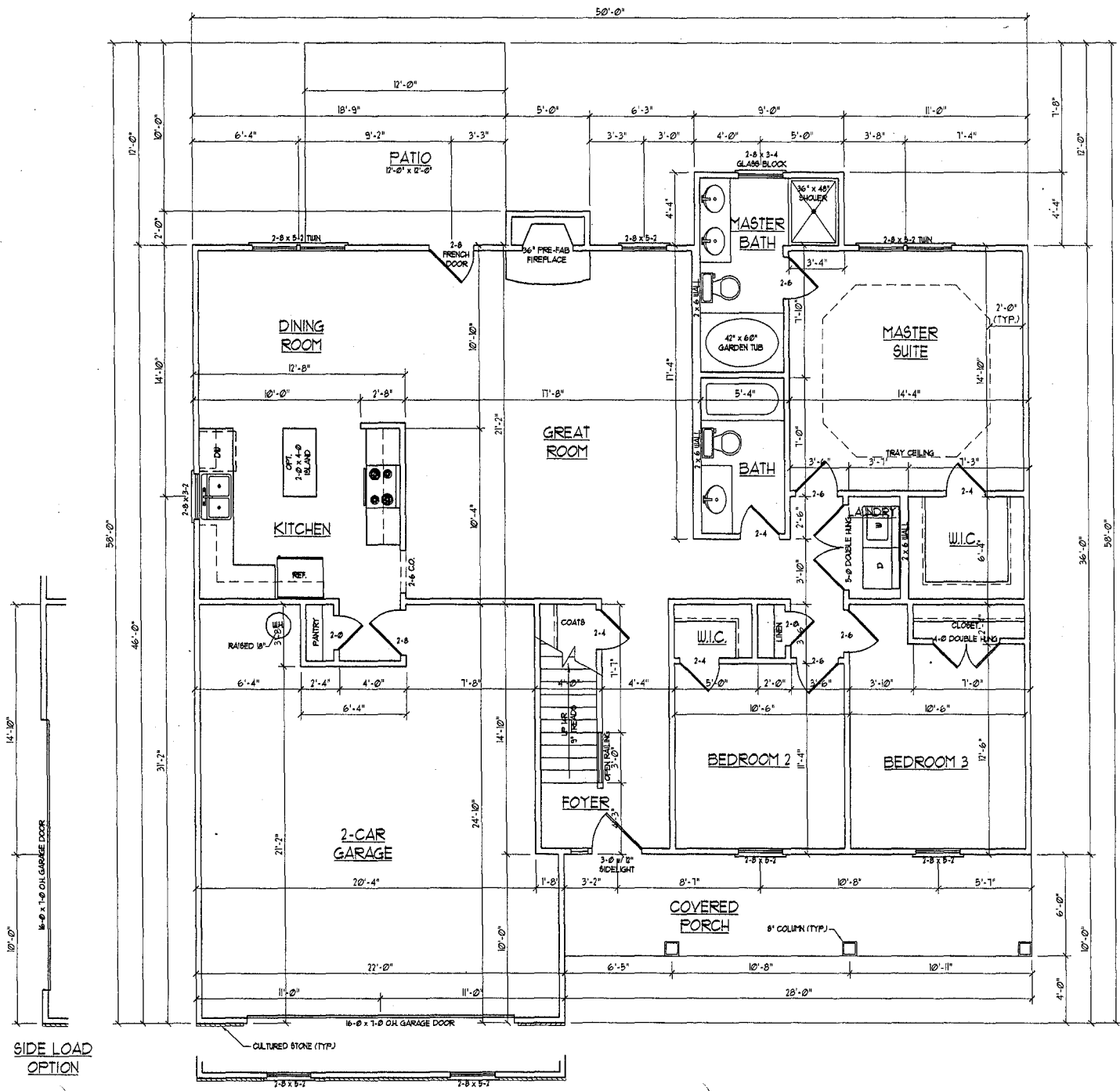
- NOTES:**
- 1) STRUCTURAL DESIGN PER NORTH CAROLINA STATE BUILDING CODE: RESIDENTIAL CODE, 2006 EDITION.
 - 2) INSTALL 1/2" ANCHOR BOLTS 6'-0" O.C. AND WITHIN 1'-0" FROM END OF EACH PLATE.
 - 3) MEAN ROOF HEIGHT IS LESS THAN 30 FEET.
 - 4) EXTERIOR WALLS DESIGNED FOR 150 MPH WINDS.
 - 5) WALL CLADDING DESIGNED FOR 741 PSF (POSITIVE AND NEGATIVE).
 - 6) ROOF CLADDING DESIGNED FOR 712 PSF (POSITIVE AND NEGATIVE) FOR ROOF PITCHES 1/2 TO 1/2 AND 34.8 PSF (POSITIVE AND NEGATIVE) FOR ROOF PITCHES 22.5/12 TO 1/2.
 - 7) WALLS TO BE BRACED IN ACCORDANCE WITH SECTION R6-02.10 OF THE NORTH CAROLINA STATE BUILDING CODE: RESIDENTIAL CODE, 2006 EDITION.

**J.S. THOMPSON
ENGINEERING, INC.**
1015 WEAVER AVE. SUITE 100
FARMERSVILLE, NC 27834
PHONE: (704) 259-9111 FAX: (704) 259-9221

CL 2277
CAVINESS LAND

DATE: DECEMBER 11, 2007
SCALE: AS NOTED
DRAWN BY: CLM
ENGINEERED BY: JBT

SHEET 1 OF 8
ELEVATIONS



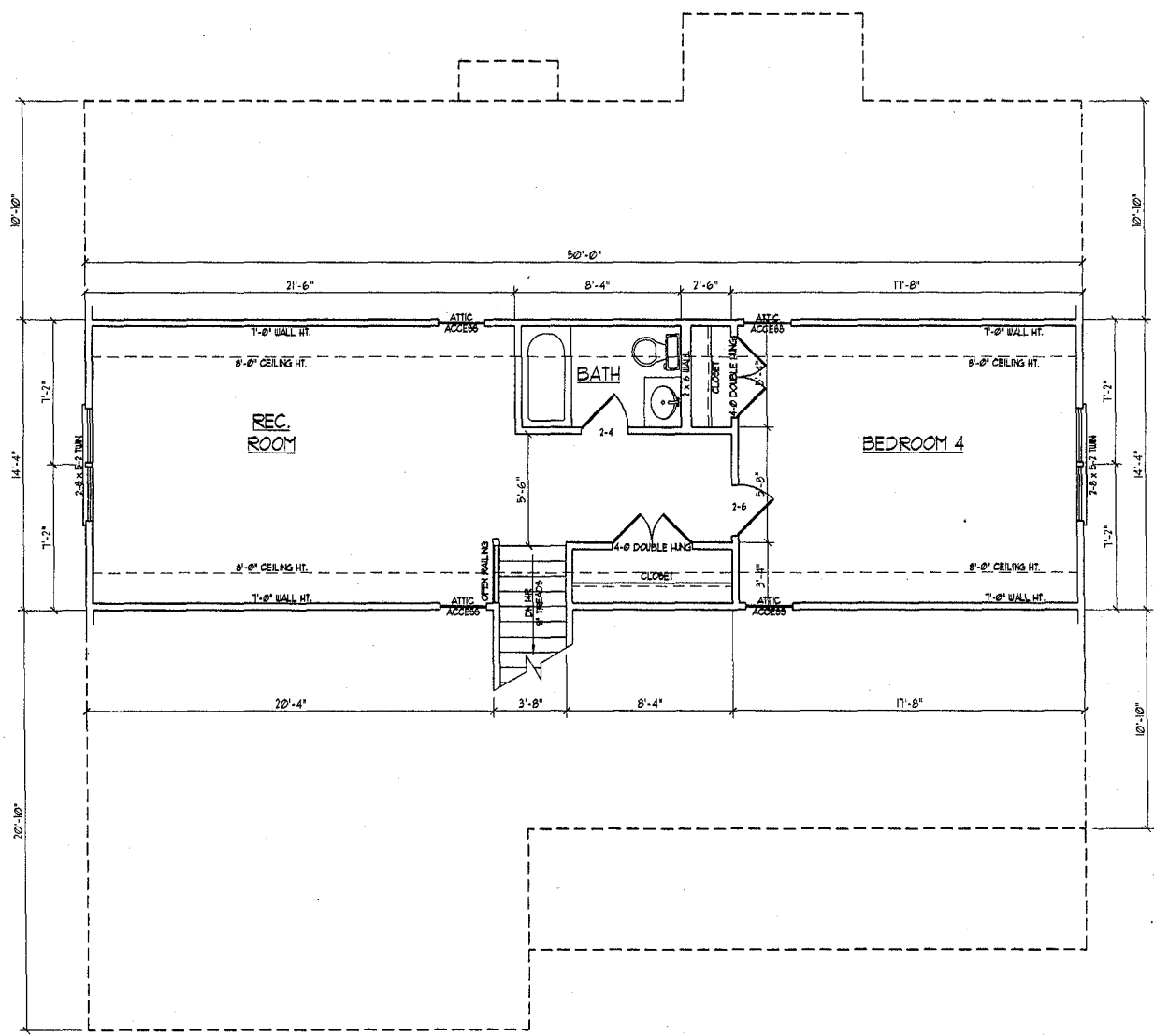
SQUARE FOOTAGE	
1st FLOOR:	1511 SQ. FT.
2nd FLOOR:	106 SQ. FT.
TOTAL:	2217 SQ. FT.
FRONT PORCH:	168 SQ. FT.
REAR PORCH:	144 SQ. FT.
GARAGE:	498 SQ. FT.

**J.S. THOMPSON
ENGINEERING, INC**
1031 WADE AVE., SUITE 104 SALEM, NC 28135
PHONE: (919) 399-9110 FAX: (919) 399-9211

**CL 2277
CAVINESS LAND**

DATE: DECEMBER 11, 2007
SCALE: 1/4" = 1'-0"
DRAWN BY: JLM
ENGINEERED BY: JTW

SHEET 2 OF 8
FIRST FLOOR PLAN



**J.S. THOMPSON
ENGINEERING, INC**
1011 WADE AVE. SUITE 104 FOLEY, NC 27645
PHONE: (919) 299-6519 FAX: (919) 299-9321

**CL 2277
CAVINESS LAND**

DATE: DECEMBER 11, 2007
SCALE: 1/4" = 1'-0"
DRAWN BY: CM
ENGINEERED BY: RW

SHEET: 3 OF 8
SECOND FLOOR PLAN