

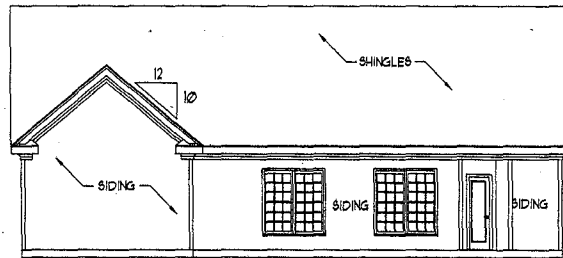
CL 1826 (Nolan) (GARAGE DW LEFT)

1:10/4 Drawn: BUST-DVD/James Land CL 1826 CL 1826_1-08.dwg 1/25/2008 8:59:48 AM



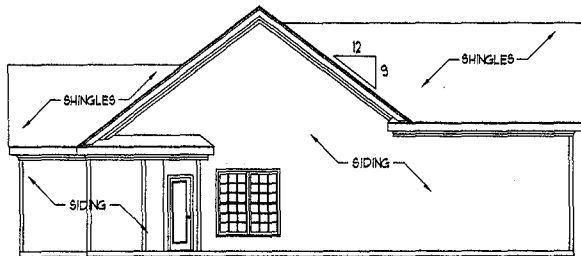
FRONT ELEVATION

SCALE: 1/4" = 1'-0"

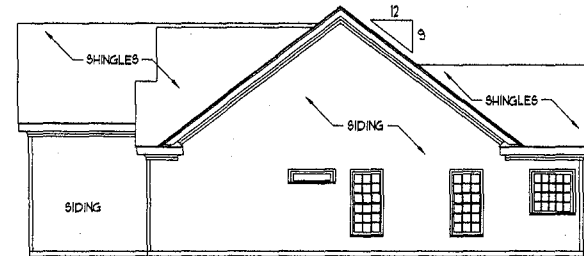


REAR ELEVATION

SCALE: 1/8" = 1'-0"



LEFT ELEVATION
SCALE: 1/8" = 1'-0"



RIGHT ELEVATION
SCALE: 1/8" = 1'-0"

NOTES:

- 1) STRUCTURAL DESIGN PER NORTH CAROLINA STATE BUILDING CODE, RESIDENTIAL CODE, 2006 EDITION.
- 2) INSTALL 1/2" ANCHOR BOLTS 6'-0" O.C. AND WITHIN 1'-0" FROM END OF EACH PLATE.
- 3) MEAN RO.

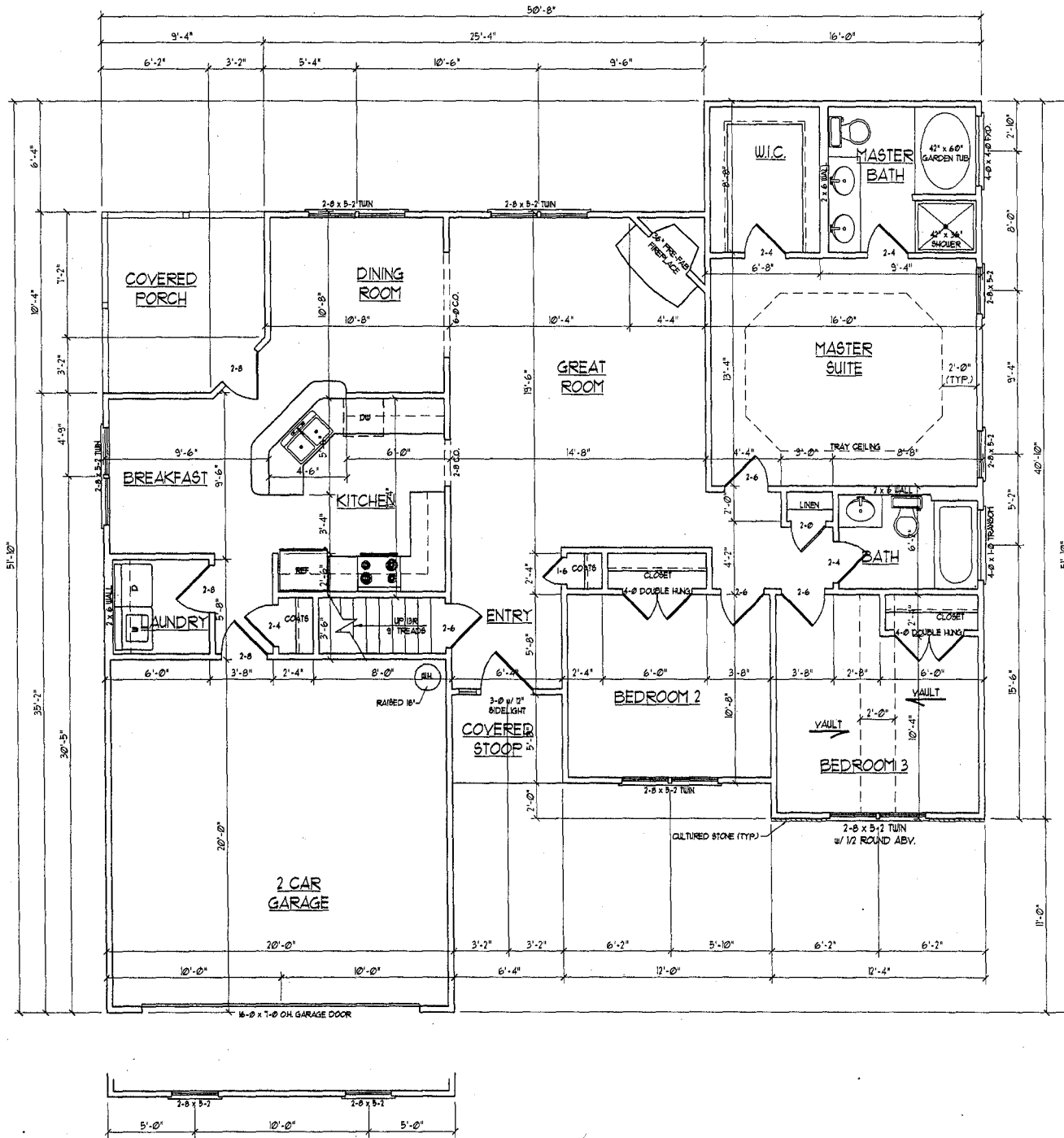
(NEGATIVE) FOR ROOF PITCHES 1/2 TO 2/12 AND 3/4 PBF (POSITIVE AND NEGATIVE) FOR ROOF PITCHES 2 25/32 TO 1/12.
 1) WALLS TO BE BRACED IN ACCORDANCE WITH SECTION R6-02.12 OF THE NORTH CAROLINA STATE BUILDING CODE, RESIDENTIAL CODE, 2006 EDITION.

**J.S. THOMPSON
ENGINEERING, INC**
 1031 WADE AVE. SUITE 104 RALEIGH, NC 27605
 PHONE (919) 899-9191 FAX (919) 899-9211

CL 1826
CAVINESS LAND

DATE: JANUARY 23, 2008
 SCALE: AS NOTED
 DRAWN BY: LM
 ENGINEERED BY: JBT

SHEET 1 OF 8
 ELEVATIONS



SQUARE FOOTAGE	
1st FLOOR:	1510 SQ. FT.
2nd FLOOR:	316 SQ. FT.
TOTAL:	1826 SQ. FT.
FRONT PORCH:	37 SQ. FT.
REAR PORCH:	91 SQ. FT.
GARAGE:	399 SQ. FT.

**J.S. THOMPSON
ENGINEERING, INC.**
1010 W. 14TH ST., SUITE 200
DALLAS, TEXAS 75202
PHONE: (972) 766-9910 FAX: (972) 766-9921

**CL 1826
CAVINESS LAND**

GENERAL NOTES
 1) ALL WORK SHALL BE PERFORMED IN ACCORDANCE WITH ALL APPLICABLE NATIONAL, STATE AND LOCAL CODES AND REGULATIONS.
 2) DIMENSIONS ARE SHOWN UNLESS OTHERWISE NOTED.
 3) BEFORE BEGINNING CONSTRUCTION ANY DISCREPANCIES SHALL BE REPORTED TO J.S. THOMPSON ENGINEERING, INC. FOR JUSTIFICATION AND/OR CORRECTION.
 4) BEFORE PROCEEDING WITH WORK CONTRACTORS SHALL ASSUME RESPONSIBILITY FOR VERIFYING THAT ALL DIMENSIONS AND LOCATIONS OF FOUNDATION, WALLS AND ROOFING SHALL BE AS SHOWN ON THIS PLAN AND NEVER SCALED.
 5) CONTRACTOR SHALL ASSUME RESPONSIBILITY OF THE BUILDING WITH ALL SITE REQUIREMENTS.

DATE: JANUARY 25, 2008
SCALE: 1/8" = 1'-0"
DESIGNED BY: JLM
ENGINEERED BY: JLM
EN: (GENERATED BY: JLM)



**SIDE LOAD
OPTION**

J.S. THOMPSON
ENGINEERING, INC.
1033 WADE AVE., SUITE 104 KALEICHI, NC 27605
PHONE: (919) 789-9919 FAX: (919) 789-9211

CL 1826
CAVINESS LAND

DATE: JANUARY 21, 2008
SCALE: 1/8" = 1'-0"
DRAWN BY: ELM
ENGINEER: J.S. THOMPSON

SHEET: 3 OF 8
SECOND
FLOOR PLAN

