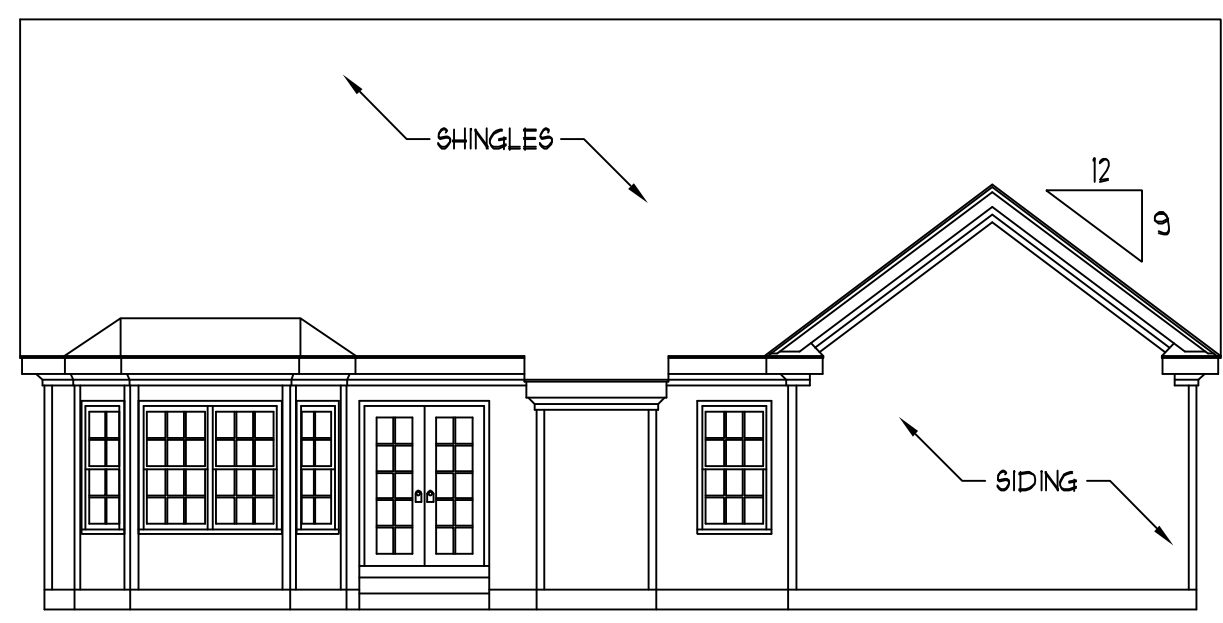




8'-1 1/2" CLG. HGT.  
6'-10" HDR. HGT.  
8'-1 1/2" CLG. HGT.  
6'-10" HDR. HGT.  
SHUTTERS (TYP.)

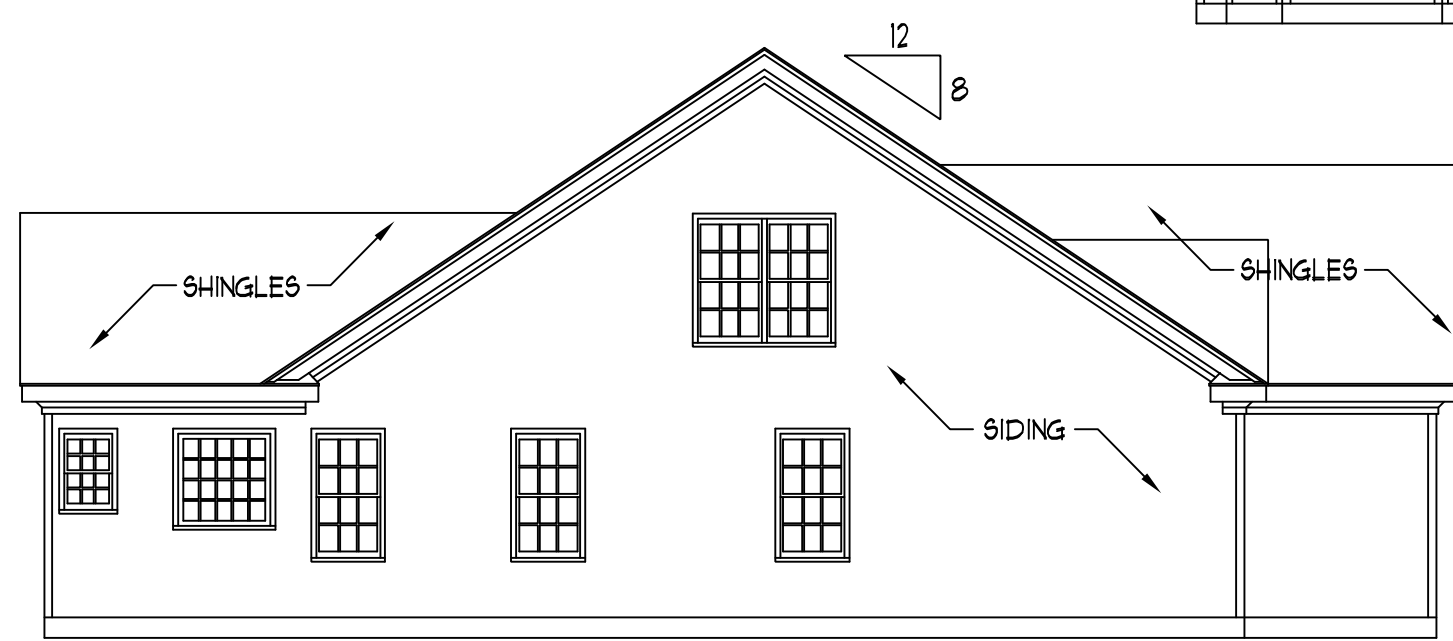
11'-1" MEAN ROOF HEIGHT  
BRICK FDN.  
4" CORNERBOARD (TYP.)

CULTURED STONE  
STEPS PER GRADE  
**FRONT ELEVATION**  
SCALE: 1/4" = 1'-0"

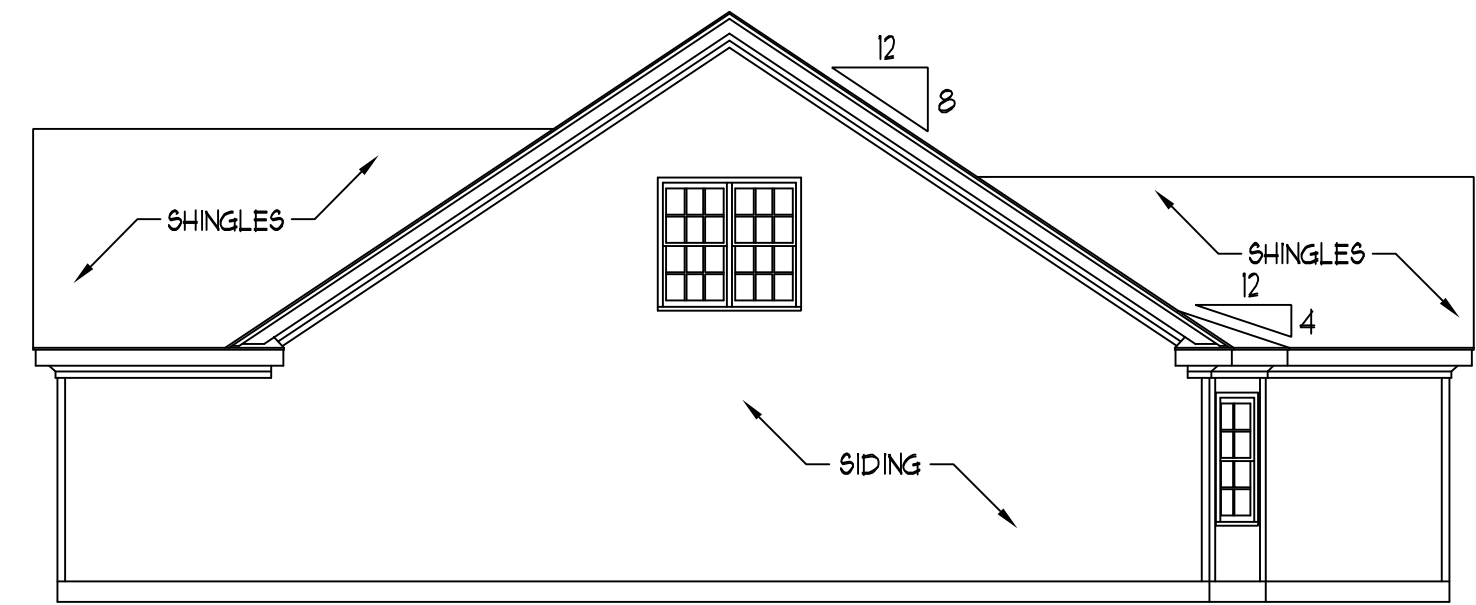


**REAR ELEVATION**  
SCALE: 1/8" = 1'-0"

- NOTES:**
- 1) STRUCTURAL DESIGN PER NORTH CAROLINA STATE BUILDING CODE, RESIDENTIAL CODE, 2006 EDITION.
  - 2) INSTALL 1/2" ANCHOR BOLTS 6'-0" O.C. AND WITHIN 1'-0" FROM END OF EACH PLATE.
  - 3) MEAN ROOF HEIGHT IS LESS THAN 30 FEET.
  - 4) EXTERIOR WALLS DESIGNED FOR 100 MPH WINDS.
  - 5) WALL CLADDING DESIGNED FOR 241 PSF (POSITIVE AND NEGATIVE).
  - 6) ROOF CLADDING DESIGNED FOR 210 PSF (POSITIVE AND NEGATIVE) FOR ROOF PITCHES 1/12 TO 12/12 AND 348 PSF (POSITIVE AND NEGATIVE) FOR ROOF PITCHES 225/12 TO 1/12.
  - 7) WALLS TO BE BRACED IN ACCORDANCE WITH SECTION R602.10 OF THE NORTH CAROLINA STATE BUILDING CODE, RESIDENTIAL CODE, 2006 EDITION.



**LEFT ELEVATION**  
SCALE: 1/8" = 1'-0"



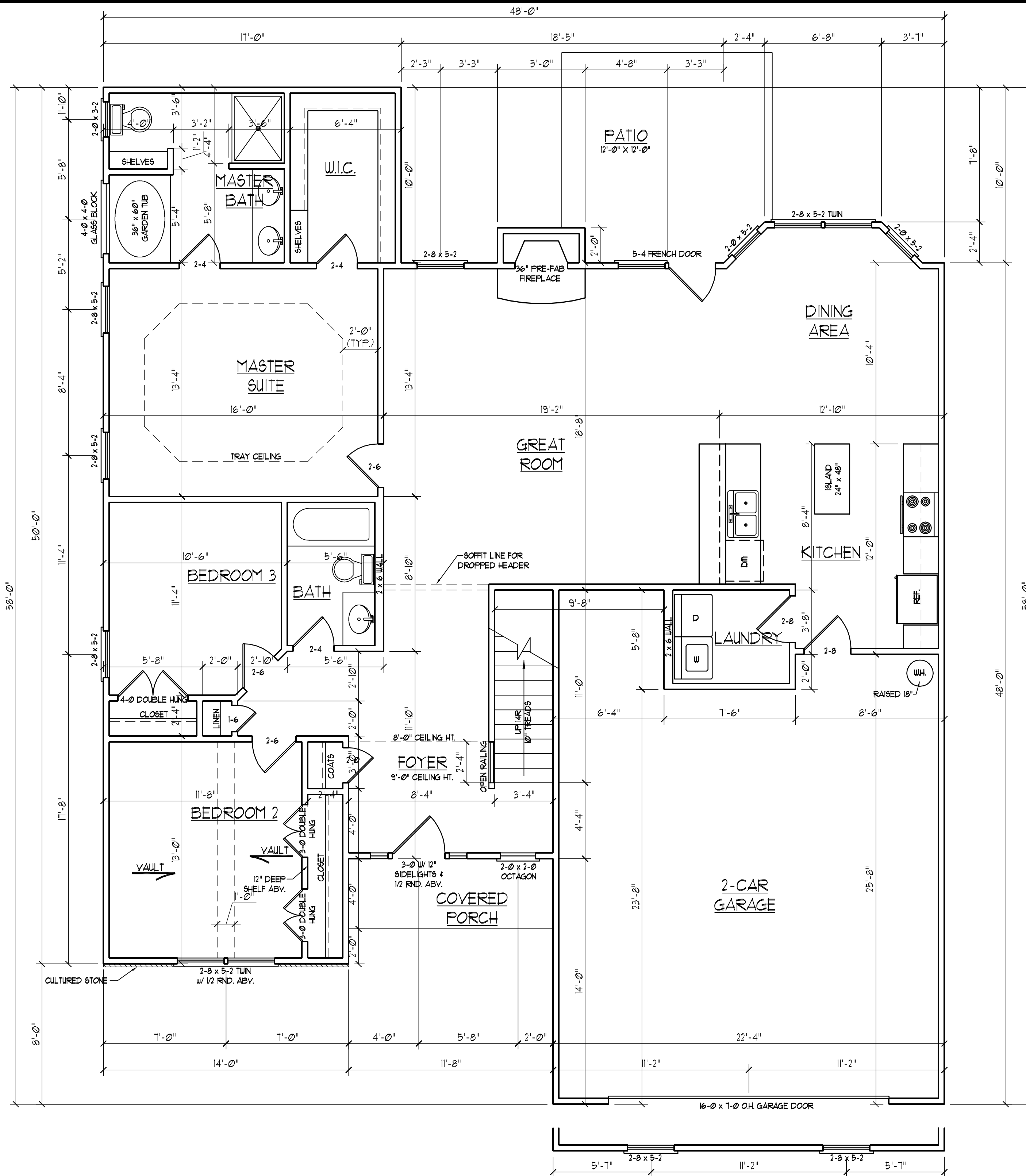
**RIGHT ELEVATION**  
SCALE: 1/8" = 1'-0"

**J.S. THOMPSON  
ENGINEERING, INC**  
1033 WADE AVE., SUITE 104 RALEIGH, NC 27605  
PHONE: (919) 789-9919 FAX: (919) 789-9921

CL 2326  
CAVINNESS LAND

DATE: JANUARY 25, 2008  
SCALE: AS NOTED  
DRAWN BY: CM  
ENGINEERED BY: JBW

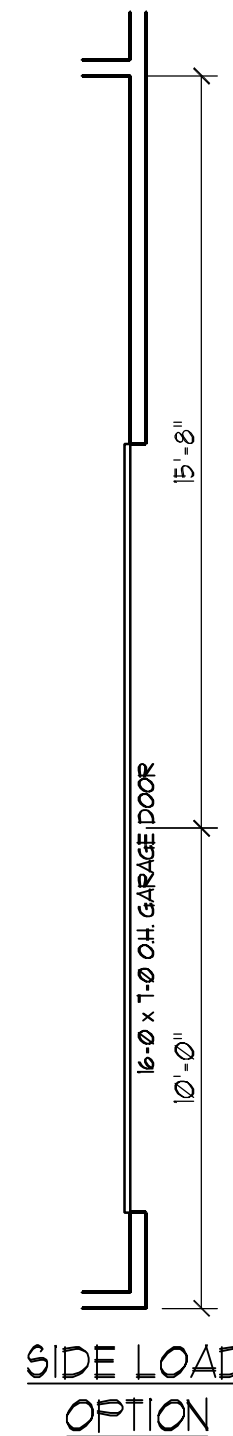
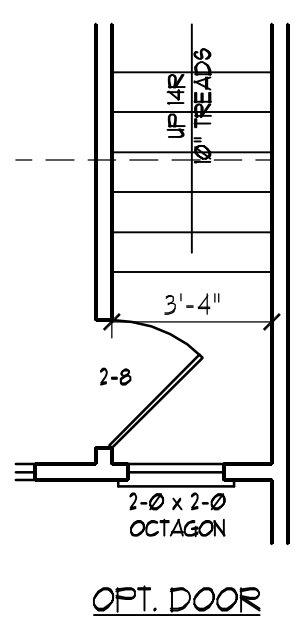
SHEET 1 OF 7  
ELEVATIONS



SQUARE FOOTAGE	
1st FLOOR:	1641 SQ. FT.
2nd FLOOR:	685 SQ. FT.
TOTAL:	2326 SQ. FT.
FRONT PORCH:	41 SQ. FT.
REAR PORCH:	114 SQ. FT.
GARAGE:	589 SQ. FT.

**GENERAL NOTES**

- 1/ ALL WORK SHALL BE PERFORMED IN ACCORDANCE WITH ALL APPLICABLE NATIONAL, STATE, AND LOCAL CODES AND REGULATIONS.
- 2/ CONTRACTOR SHALL VERIFY ALL CONDITIONS AND DIMENSIONS AT SITE BEFORE BEGINNING CONSTRUCTION. ANY DISCREPANCIES SHALL BE REPORTED TO J.S. THOMPSON ENGINEERING, INC. FOR JUSTIFICATION AND/OR CORRECTION BEFORE PROCEEDING WITH WORK. CONTRACTORS SHALL ASSUME RESPONSIBILITY FOR ERRORS THAT ARE NOT REPORTED PRIOR TO CONSTRUCTION.
- 3/ ALL DIMENSIONS SHOULD BE READ OR CALCULATED AND NEVER SCALED.
- 4/ CONTRACTOR SHALL INSURE COMPATIBILITY OF THE BUILDING WITH ALL SITE REQUIREMENTS.

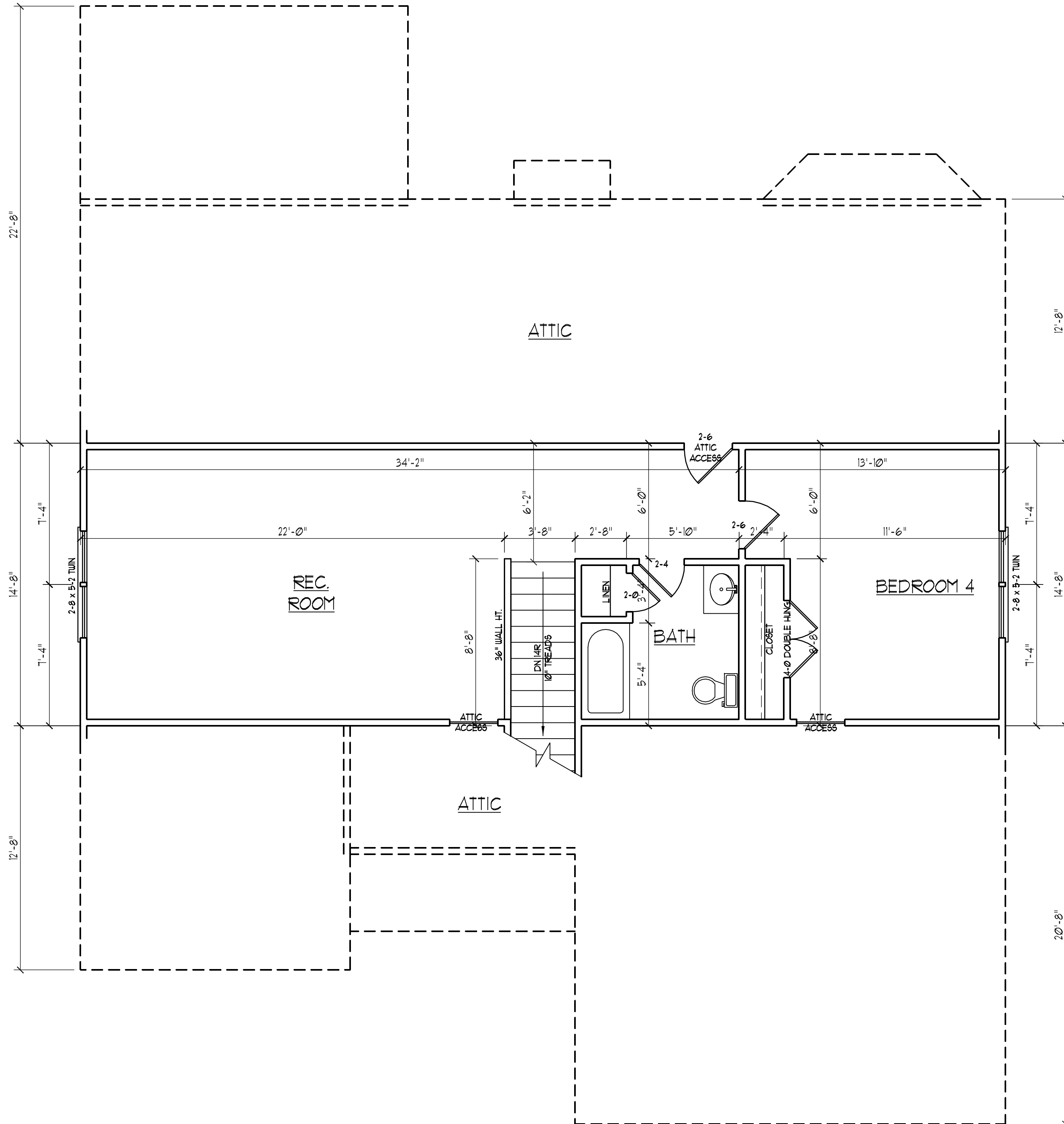


**J.S. THOMPSON  
ENGINEERING, INC.**  
1033 WADE AVE., SUITE 104 RALEIGH, NC 27605  
PHONE: (919) 789-9919 FAX: (919) 789-9921

**CL 2326  
CAVINNESS LAND**

DATE: JANUARY 25, 2008  
SCALE: 1/4"=1'-0"  
DRAWN BY: CM  
ENGINEERED BY: JBW

SHEET 2 OF 7  
FIRST FLOOR PLAN



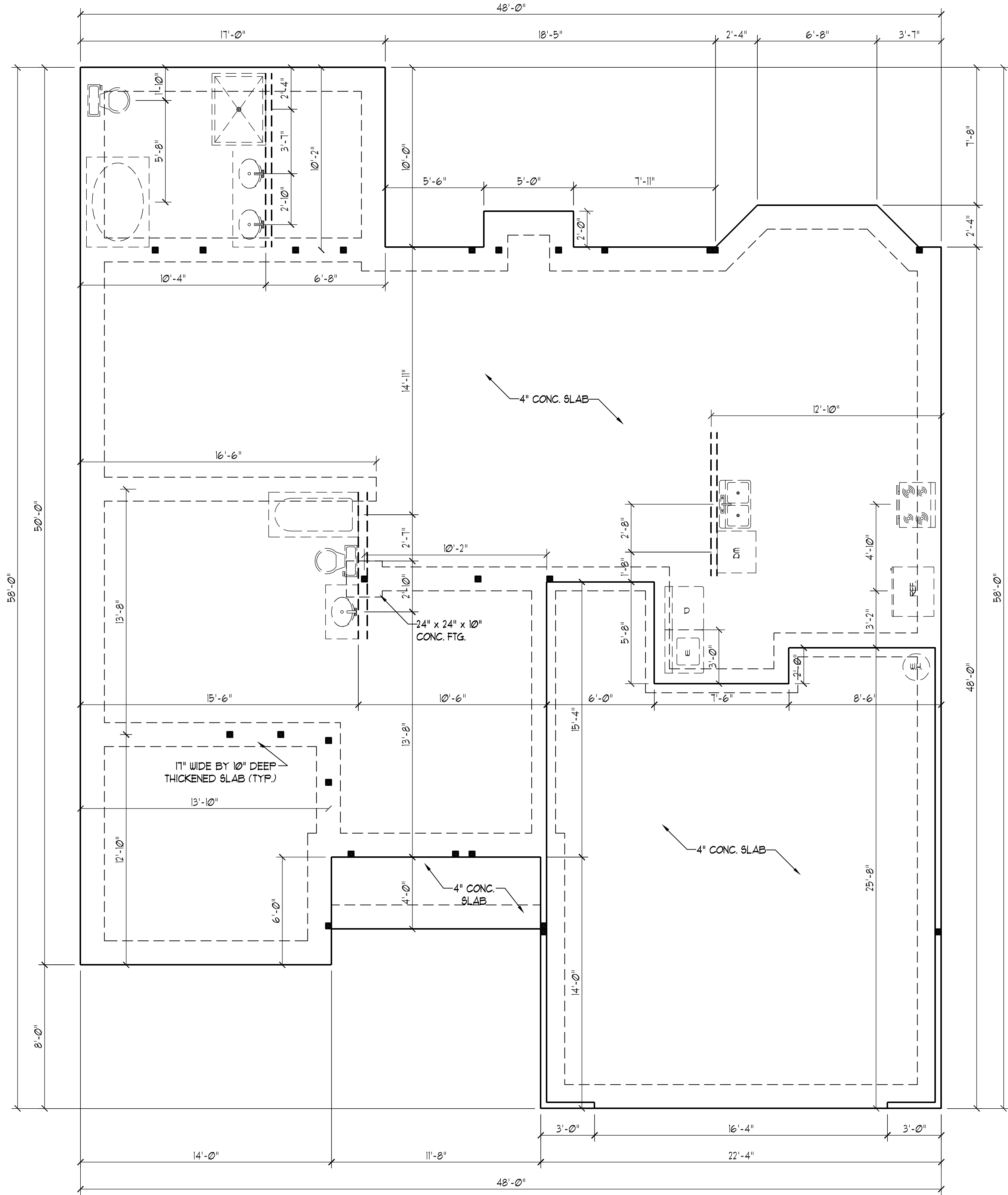
**J.S. THOMPSON**  
**ENGINEERING, INC**  
 1033 WADE AVE., SUITE 104 RALEIGH, NC 27605  
 PHONE: (919) 789-9919 FAX: (919) 789-9921

**CL 2326**  
**CAVINNESS LAND**

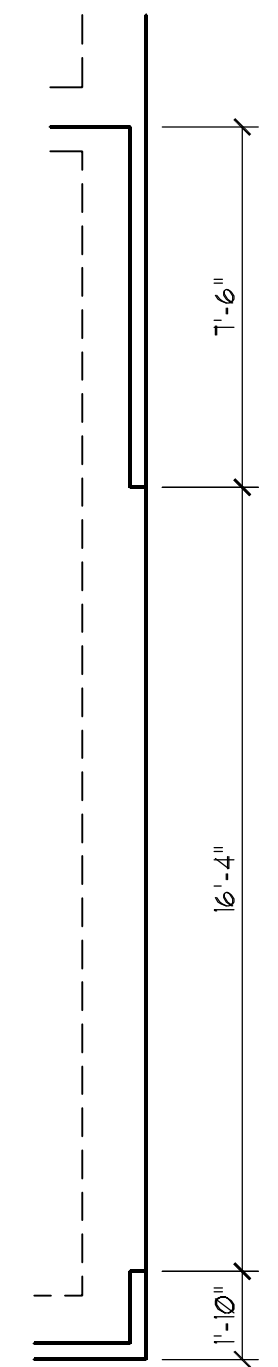
DATE: JANUARY 25, 2008  
 SCALE: 1/4"=1'-0"  
 DRAWN BY: CM  
 ENGINEERED BY: JBW

SHEET: 3 OF 7  
 SECOND FLOOR PLAN





**STRUCTURAL NOTES:**  
 SEE DETAILS PAGE FOR TYPICAL  
 NOTES AND SECTIONS.



**SIDE LOAD  
 OPTION**

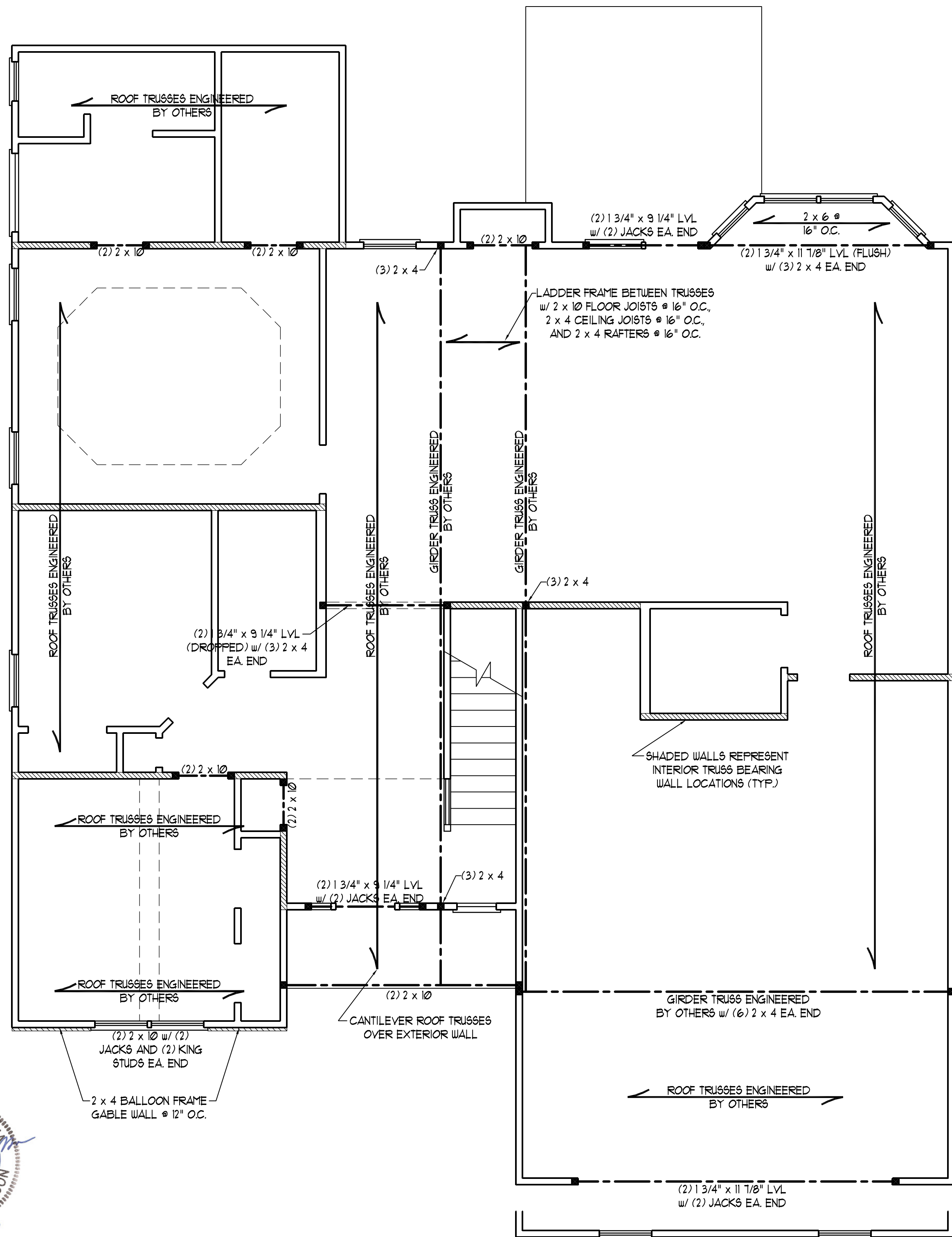


**J.S. THOMPSON  
 ENGINEERING, INC**  
 1033 WADE AVE., SUITE 104 RALEIGH, NC 27605  
 PHONE: (919) 789-9919 FAX: (919) 789-9921

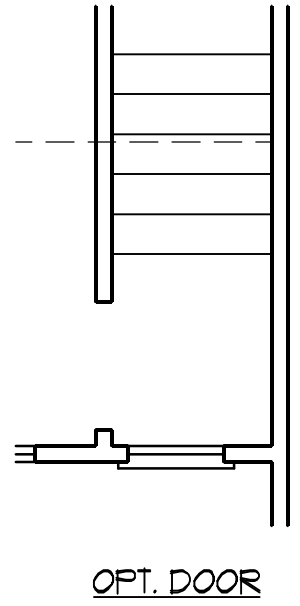
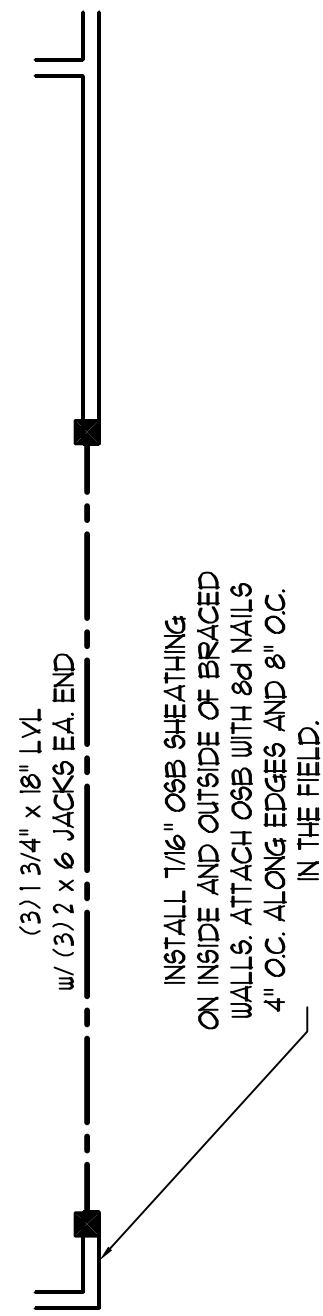
**CL 2326  
 CAVINESS LAND**

DATE: JANUARY 25, 2008  
 SCALE: 1/4"=1'-0"  
 DRAWN BY: CM  
 ENGINEERED BY: JBW

SHEET **4** OF **7**  
 SLAB  
 FOUNDATION PLAN



- STRUCTURAL NOTES:**
- 1) ALL FRAMING LUMBER TO BE #2 SFF (UNO).
  - 2) ALL LOAD BEARING HEADERS TO BE (2) 2 x 10 (UNO).
  - 3) SUPPORT WALLS PARALLEL TO ROOF TRUSSES PER MANUFACTURER'S SPECS.
  - 4) ALL BEAMS ARE TO BE SUPPORTED WITH (2) 2 x 4 PER END (UNO).
  - 5) SQUARES DENOTE POINT LOADS WHICH REQUIRE SOLID BLOCKING TO GIRDER OR FOUNDATION.

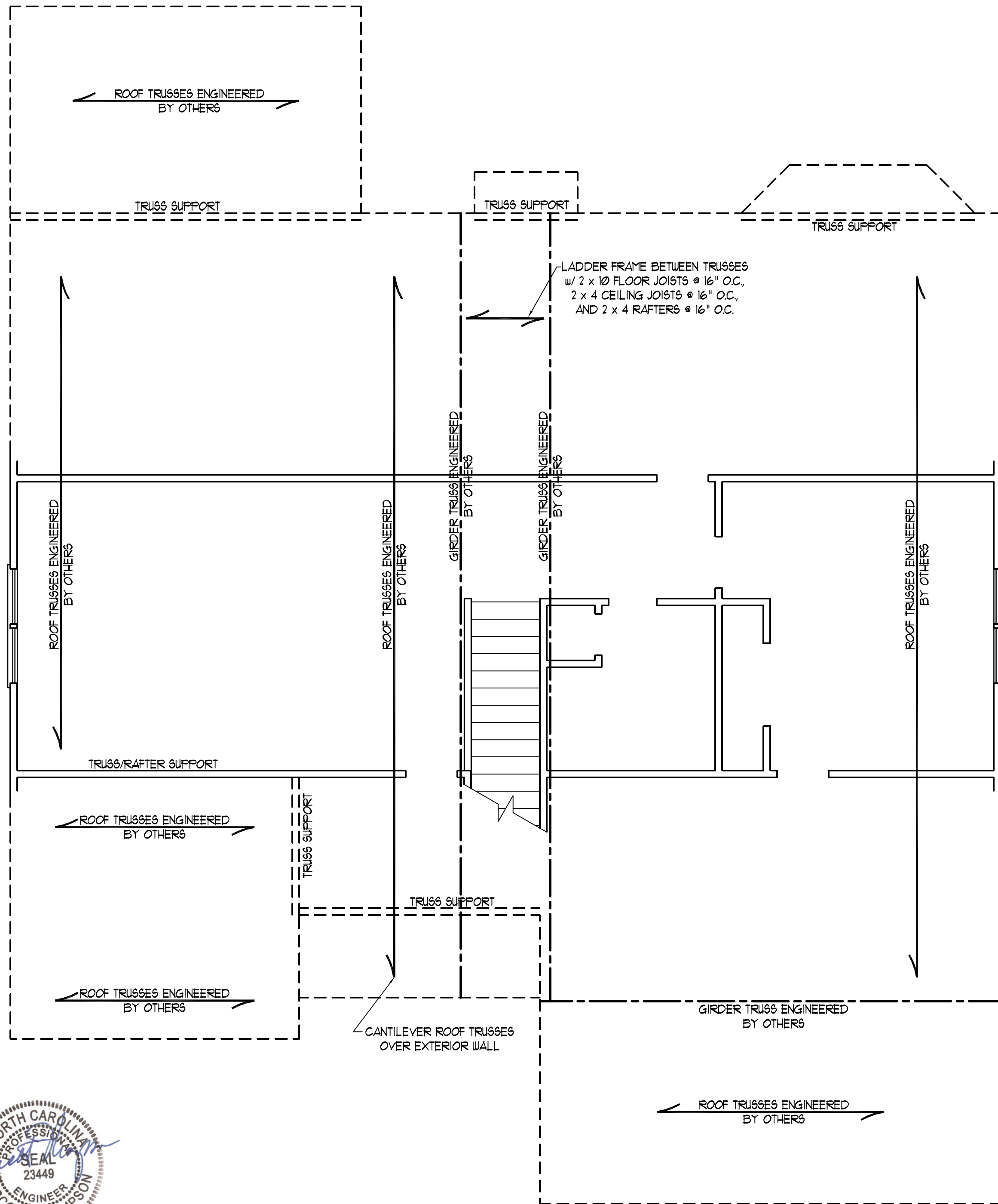


**J.S. THOMPSON  
ENGINEERING, INC**  
1033 WADE AVE., SUITE 104 RALEIGH, NC 27605  
PHONE: (919) 789-9919 FAX: (919) 789-9921

CL 2326  
CAVINNESS LAND

DATE: JANUARY 25, 2008  
SCALE: 1/4"=1'-0"  
DRAWN BY: CM  
ENGINEERED BY: JBW

SHEET 5 OF 7  
SECOND FLOOR  
FRAMING PLAN



- STRUCTURAL NOTES:**
- 1) ALL FRAMING LUMBER TO BE #2 SPF (UNO).
  - 2) ALL LOAD BEARING HEADERS TO BE (2) 2 x 10 (UNO).
  - 3) ALL BEAMS ARE TO BE SUPPORTED WITH (2) 2 x 4 PER END (UNO).
  - 4) SQUARES DENOTE POINT LOADS WHICH REQUIRE SOLID BLOCKING TO GIRDER OR FOUNDATION.



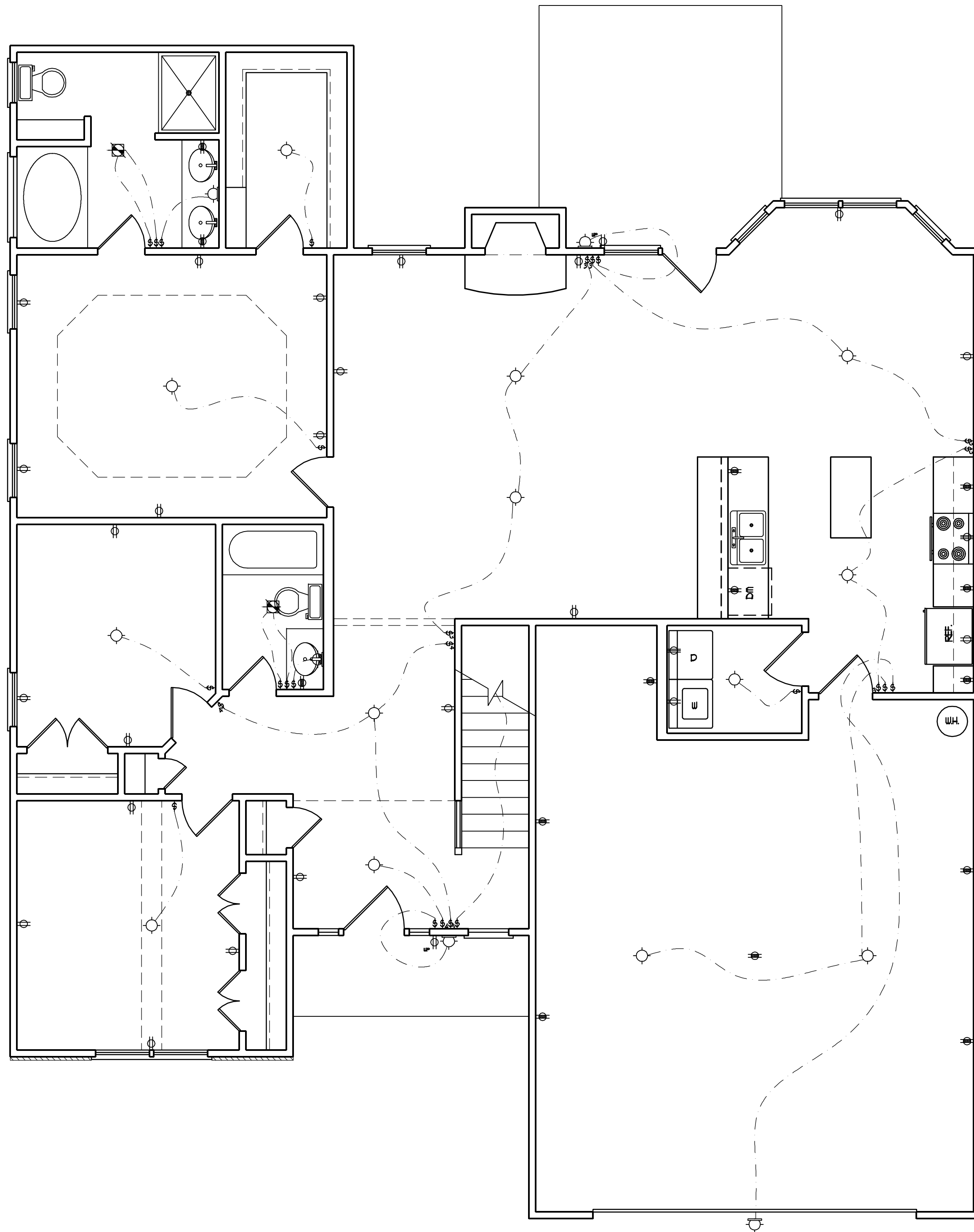
**J.S. THOMPSON  
ENGINEERING, INC**  
1033 WADE AVE., SUITE 104 RALEIGH, NC 27605  
PHONE: (919) 789-9919 FAX: (919) 789-9921

**CL 2326  
CAVINNESS LAND**

DATE: JANUARY 25, 2008  
SCALE: 1/4"=1'-0"  
DRAWN BY: CM  
ENGINEERED BY: JBW

SHEET 6 OF 7  
ATTIC FRAMING PLAN





**ELECTRICAL LEGEND**

- ⊕ 110 V OUTLET
- ⊕ 110 V GFI OUTLET
- ⊕ 110 V SWITCHED OUTLET
- ⊕ 4-FLEX
- ⊕ COUNTER OR FLOOR MOUNTED
- ⊕ COUNTER OR FLOOR MOUNTED
- ⊕ WEATHERPROOF
- ⊕ 220 V OUTLET
- ⊕ 110 V DIRECT WIRE
- ⊕ 220 V DIRECT WIRE
- ⊕ SPECIAL PURPOSE (240 V, ETC.)
- ⊕ WALL MOUNT LIGHT
- ⊕ CEILING MOUNT LIGHT
- ⊕ PENDANT LIGHT
- ⊕ RECESSED CAN LIGHT
- ⊕ MINI CAN LIGHT
- ⊕ RECESSED SPOT LIGHT
- ⊕ FLUORESCENT LIGHT
- ⊕ UNDERCABINET LIGHT
- ⊕ SWITCH
- ⊕<sub>3</sub> 3-WAY SWITCH
- ⊕<sub>4</sub> 4-WAY SWITCH
- ⊕<sub>D</sub> DIMMER SWITCH
- ⊕<sub>T</sub> TIMER SWITCH
- ⊕ TELEPHONE
- ⊕ NATURAL GAS
- ⊕ CABLE CONNECTION
- ⊕ RECESSED CEILING SPEAKER
- ⊕ VACUUM OUTLET
- ⊕ DOORBELL CHIME
- ⊕ THERMOSTAT
- ⊕ EXHAUST FAN
- ⊕ 24 HOUR TIMER
- ⊕ 110 V SMOKE DETECTOR
- ⊕ CEILING FAN
- ⊕ CEILING FAN W/ LIGHT

**J.S. THOMPSON  
ENGINEERING, INC**  
1033 WADE AVE., SUITE 104 RALEIGH, NC 27605  
PHONE: (919) 789-9919 FAX: (919) 789-9921

**CL 2326  
CAVINNESS LAND**

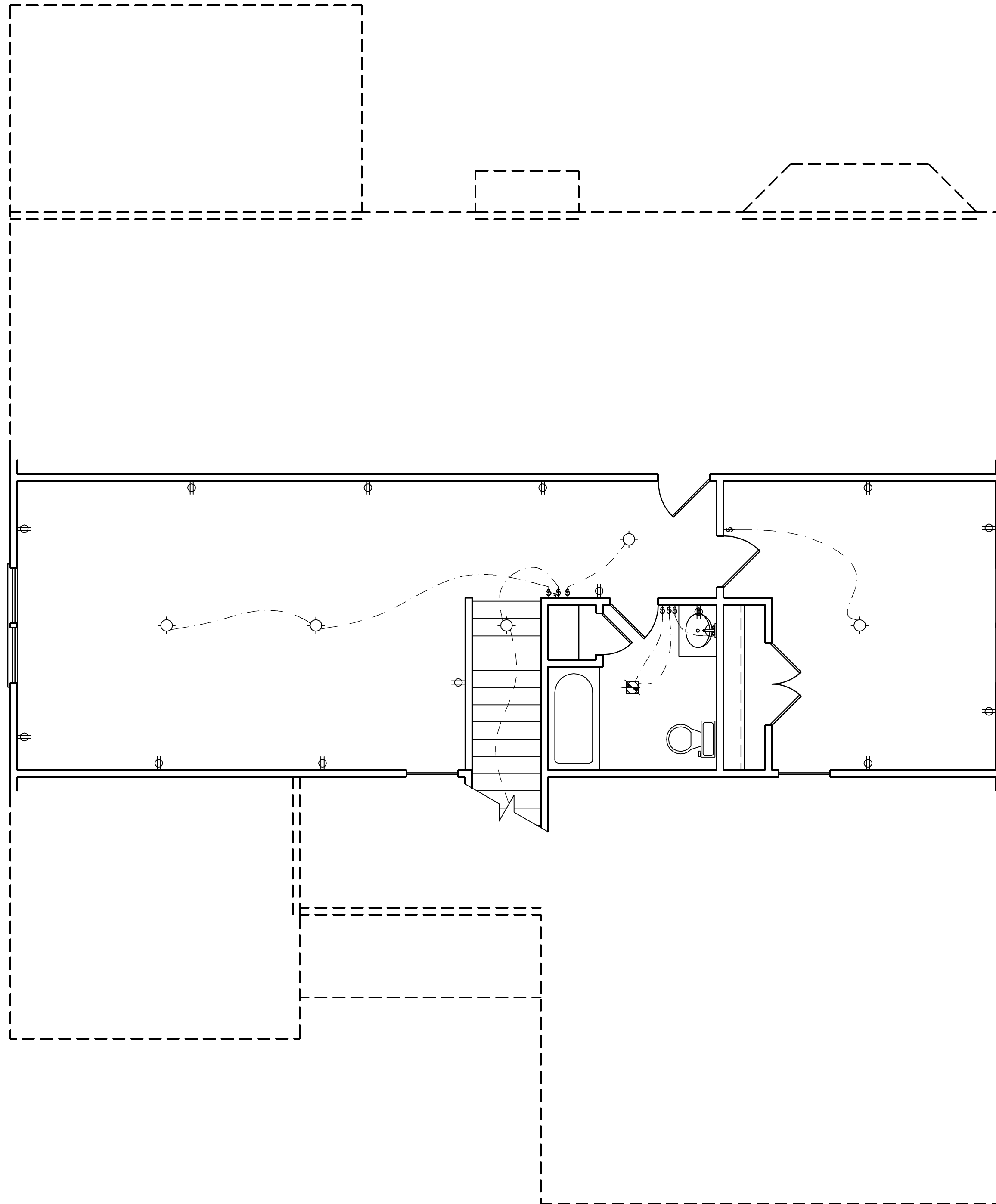
DATE: JANUARY 25, 2008

SCALE: 1/4"=1'-0"

DRAWN BY: CM

ENGINEERED BY: JBW

SHEET: E-1  
FIRST  
FLOOR ELECTRICAL



ELECTRICAL LEGEND

- ⊕ 110 V OUTLET
- ⊕ 110 V GFI OUTLET
- ⊕ 110 V SWITCHED OUTLET
- ⊕ 4-PLEX
- ⊕ COUNTER OR FLOOR MOUNTED
- ⊕ COUNTER OR FLOOR MOUNTED
- ⊕ WEATHERPROOF
- ⊕ 220 V OUTLET
- ⊕ 110 V DIRECT WIRE
- ⊕ 220 V DIRECT WIRE
- ⊕ SPECIAL PURPOSE (240 V, ETC.)
- ⊕ WALL MOUNT LIGHT
- ⊕ CEILING MOUNT LIGHT
- ⊕ PENDANT LIGHT
- ⊕ RECESSED CAN LIGHT
- ⊕ MINI CAN LIGHT
- ⊕ RECESSED SPOT LIGHT
- ⊕ FLUORESCENT LIGHT
- ⊕ UNDERCABINET LIGHT
- ⊕ SWITCH
- ⊕<sub>3</sub> 3-WAY SWITCH
- ⊕<sub>4</sub> 4-WAY SWITCH
- ⊕<sub>D</sub> DIMMER SWITCH
- ⊕<sub>T</sub> TIMER SWITCH
- ⊕ TELEPHONE
- ⊕ NATURAL GAS
- ⊕ CABLE CONNECTION
- ⊕ RECESSED CEILING SPEAKER
- ⊕ VACUUM OUTLET
- ⊕ DOORBELL CHIME
- ⊕ THERMOSTAT
- ⊕ EXHAUST FAN
- ⊕ 24 HOUR TIMER
- ⊕ 110 V SMOKE DETECTOR
- ⊕ CEILING FAN
- ⊕ CEILING FAN W/ LIGHT

**J.S. THOMPSON  
ENGINEERING, INC**  
 1033 WADE AVE., SUITE 104 RALEIGH, NC 27605  
 PHONE: (919) 789-9919 FAX: (919) 789-9921

CL 2326  
CAVINNESS LAND

DATE: JANUARY 25, 2008

SCALE: 1/4"=1'-0"

DRAWN BY: CM

ENGINEERED BY: JBW

SHEET: E-2  
 SECOND  
 FLOOR ELECTRICAL