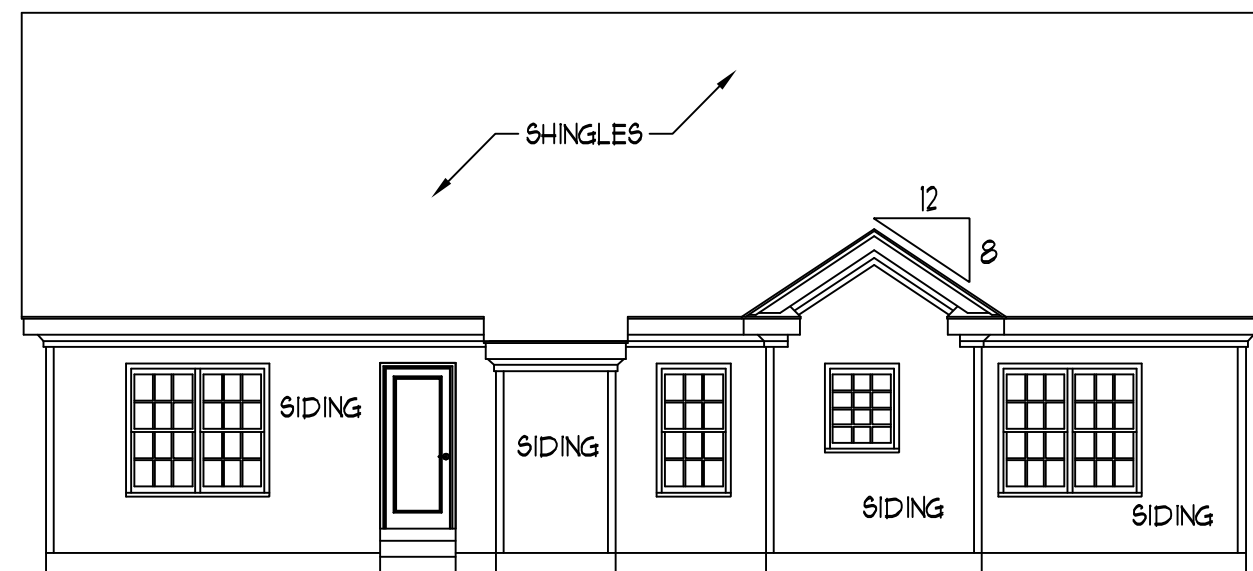


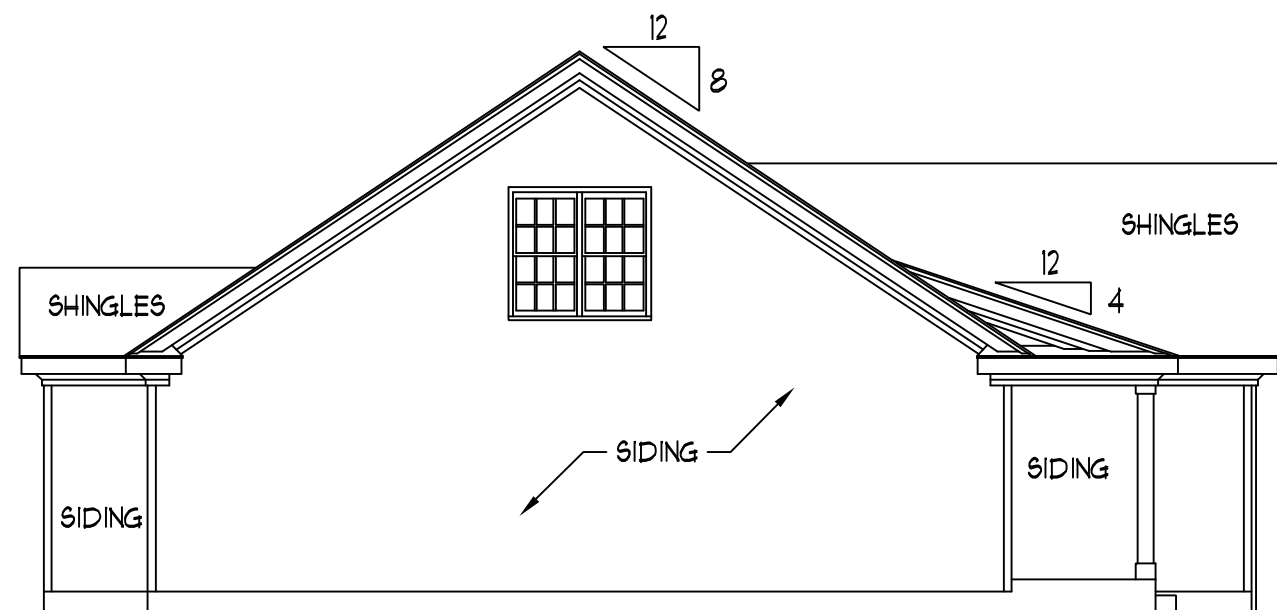
FRONT ELEVATION

SCALE: 1/4" = 1'-0"

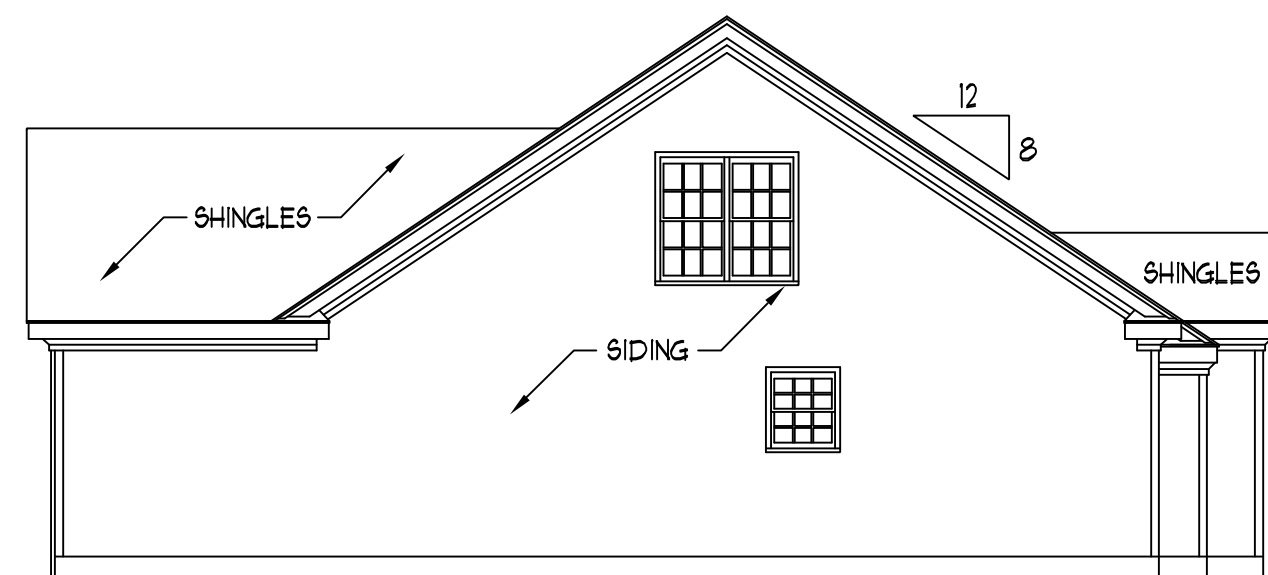


REAR ELEVATION
SCALE: 1/8" = 1'-0"

- NOTES:
- 1) STRUCTURAL DESIGN PER NORTH CAROLINA STATE BUILDING CODE: RESIDENTIAL CODE, 2006 EDITION.
 - 2) INSTALL 1/2" ANCHOR BOLTS 6'-0" O.C. AND WITHIN 1'-0" FROM END OF EACH PLATE.
 - 3) MEAN ROOF HEIGHT IS LESS THAN 30 FEET.
 - 4) EXTERIOR WALLS DESIGNED FOR 100 MPH WINDS.
 - 5) WALL CLADDING DESIGNED FOR 241 PSF (POSITIVE AND NEGATIVE).
 - 6) ROOF CLADDING DESIGNED FOR 210 PSF (POSITIVE AND NEGATIVE) FOR ROOF PITCHES 1/12 TO 12/12 AND 34.8 PSF (POSITIVE AND NEGATIVE) FOR ROOF PITCHES 225/12 TO 1/12.
 - 7) WALLS TO BE BRACED IN ACCORDANCE WITH SECTION R602.10 OF THE NORTH CAROLINA STATE BUILDING CODE: RESIDENTIAL CODE, 2006 EDITION.



LEFT ELEVATION
SCALE: 1/8" = 1'-0"



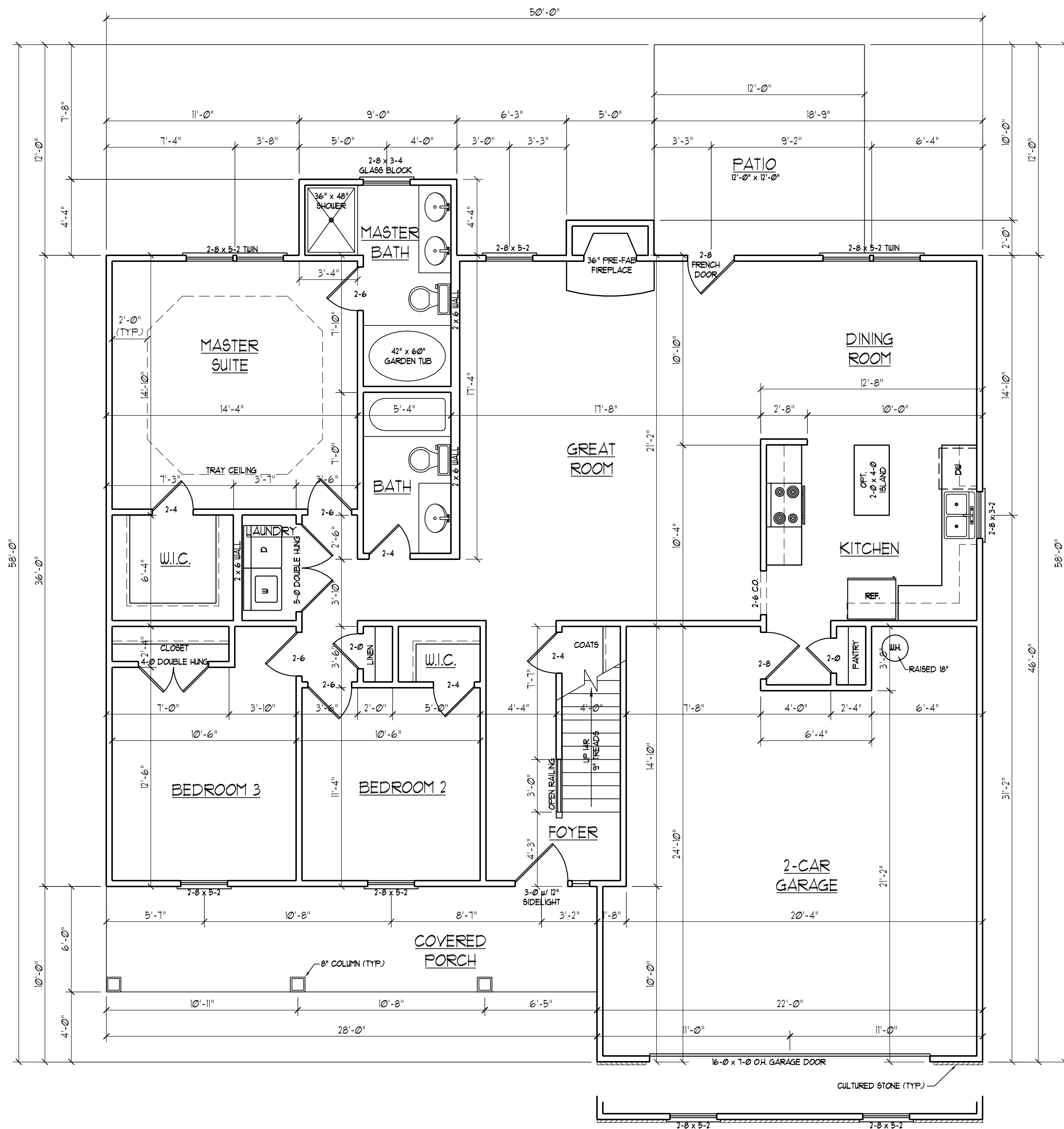
RIGHT ELEVATION
SCALE: 1/8" = 1'-0"

**J.S. THOMPSON
ENGINEERING, INC**
1033 WADE AVE., SUITE 104 RALEIGH, NC 27605
PHONE: (919) 789-9919 FAX: (919) 789-9921

CL 2277
CAVINNESS LAND

DATE: DECEMBER 13, 2007
SCALE: AS NOTED
DRAWN BY: CM
ENGINEERED BY: JBW

SHEET 1 OF 8
ELEVATIONS



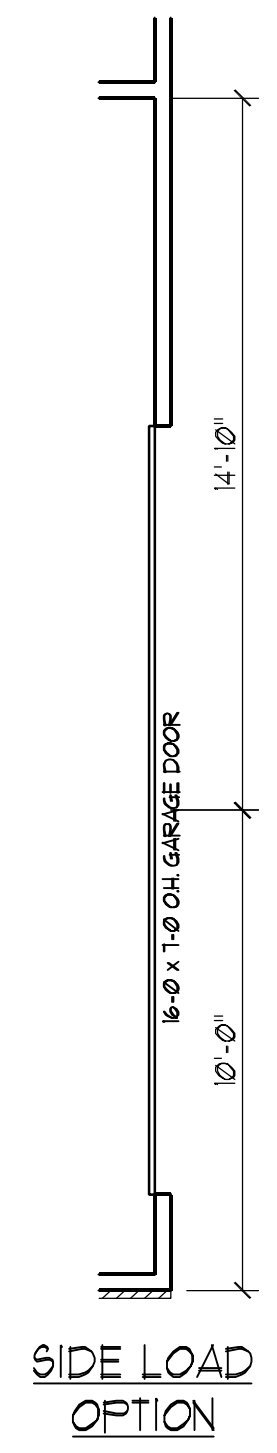
SQUARE FOOTAGE	
1st FLOOR:	1571 SQ. FT.
2nd FLOOR:	706 SQ. FT.
TOTAL:	2277 SQ. FT.
FRONT PORCH:	168 SQ. FT.
REAR PORCH:	144 SQ. FT.
GARAGE:	498 SQ. FT.

**J.S. THOMPSON
ENGINEERING, INC**
1033 WADE AVE., SUITE 104 RALEIGH, NC 27605
PHONE: (919) 789-9919 FAX: (919) 789-9921

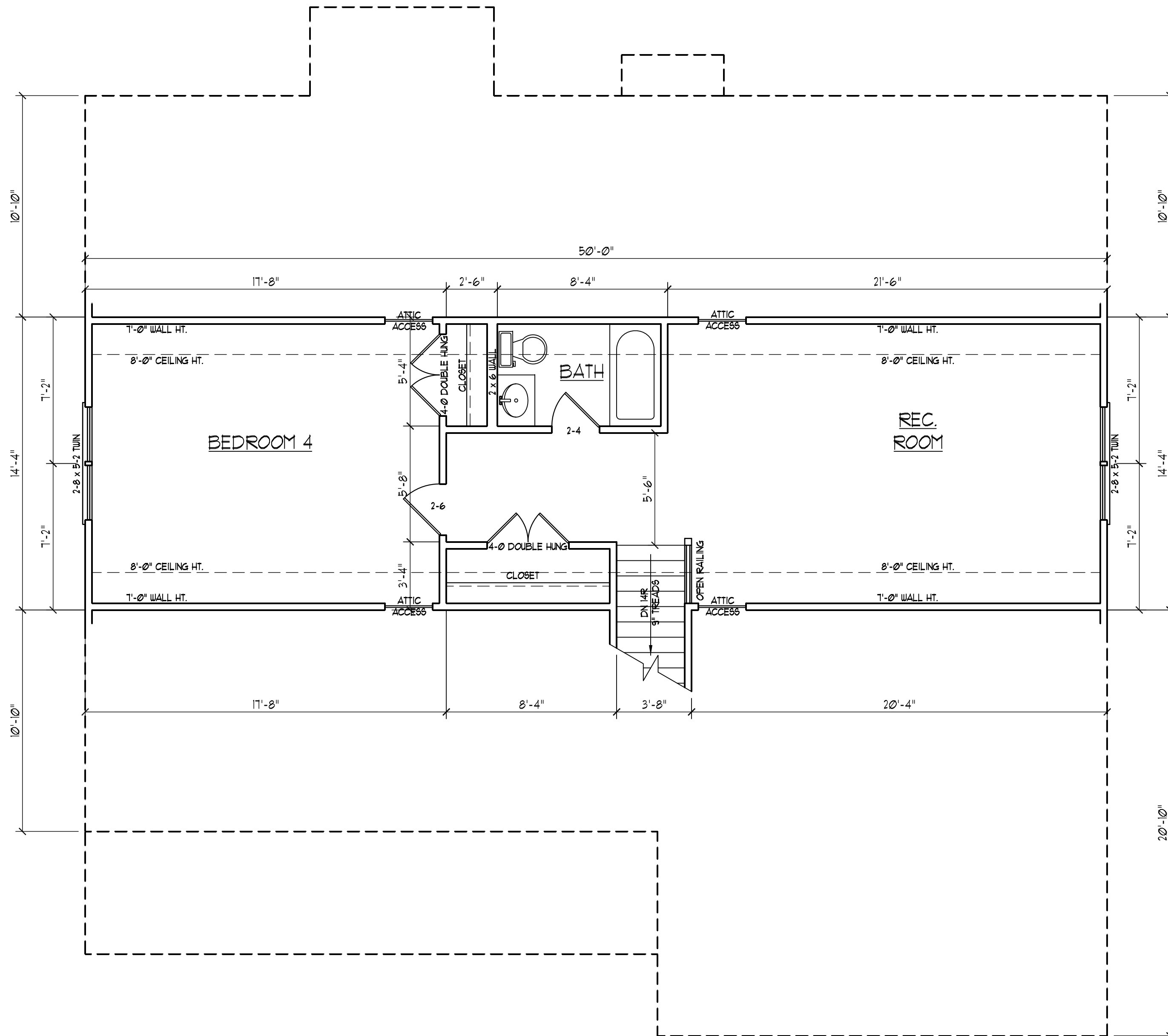
**CL 2277
CAVINESS LAND**

DATE: DECEMBER 13, 2007
SCALE: 1/4"=1'-0"
DRAWN BY: CM
ENGINEERED BY: JBW

SHEET 2 OF 8
FIRST FLOOR PLAN



SIDE LOAD
OPTION

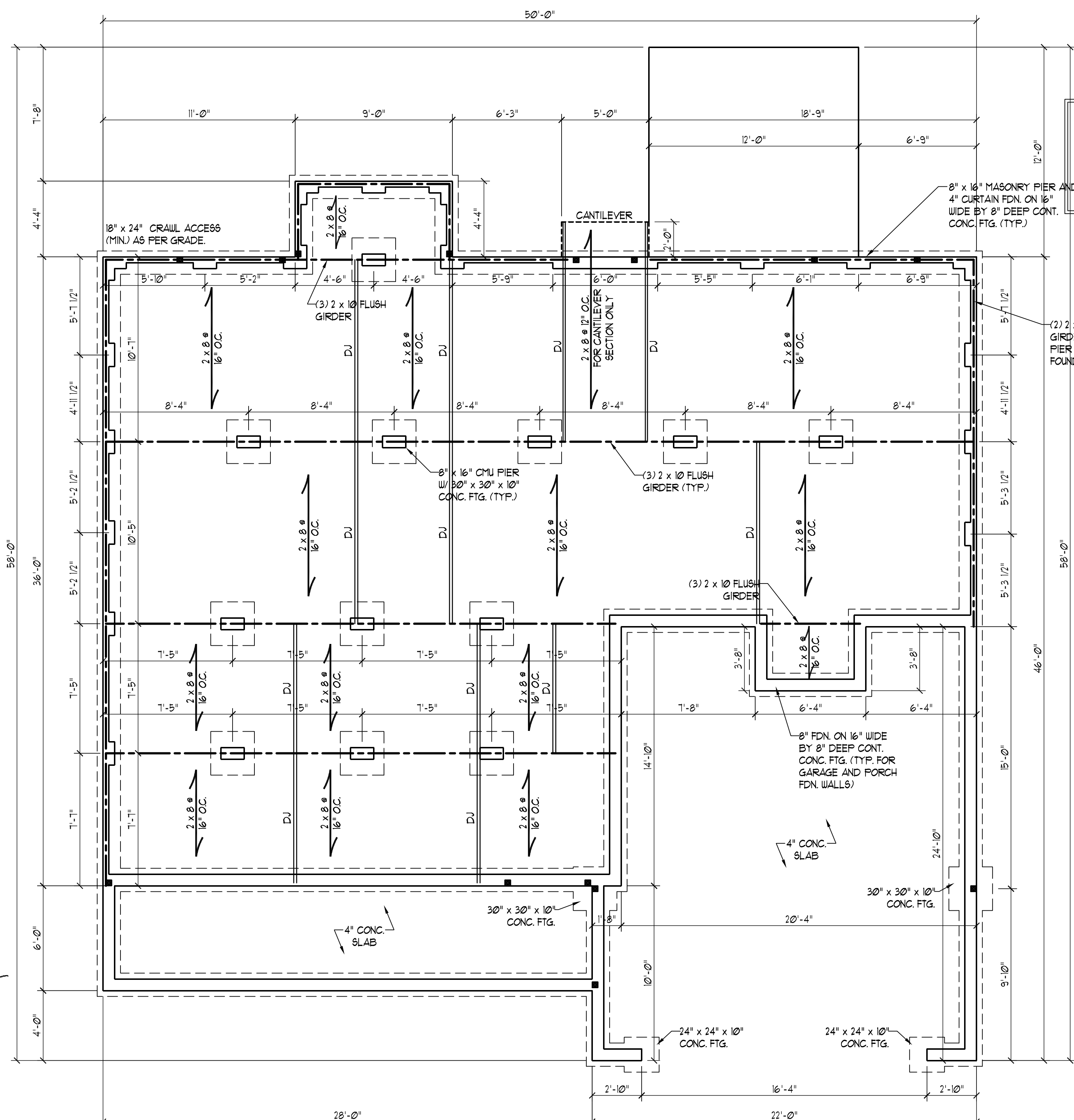


**J.S. THOMPSON
ENGINEERING, INC**
 1033 WADE AVE., SUITE 104 RALEIGH, NC 27605
 PHONE: (919) 789-9919 FAX: (919) 789-9921

**CL 2277
CAVINNESS LAND**

DATE: DECEMBER 13, 2007
 SCALE: 1/4"=1'-0"
 DRAWN BY: CM
 ENGINEERED BY: JBW

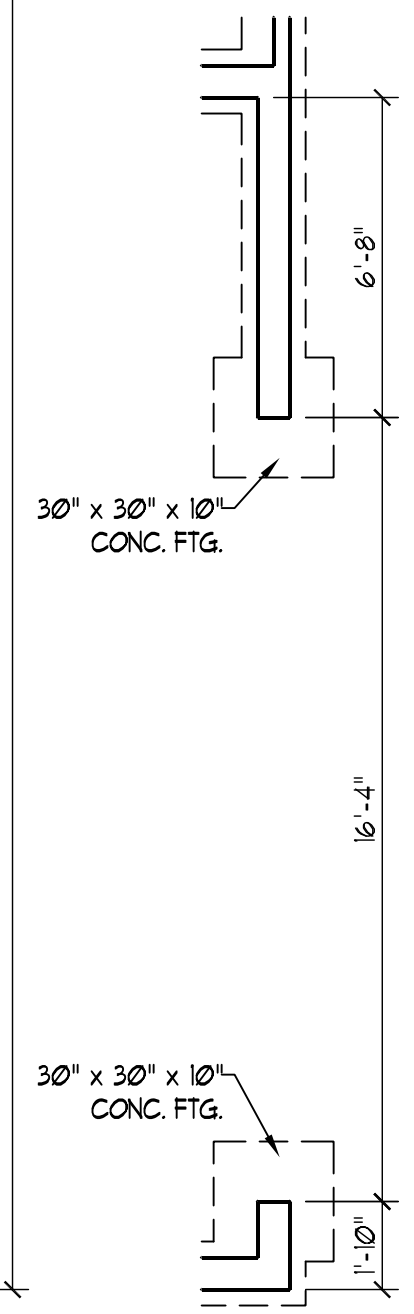
SHEET 3 OF 8
 SECOND FLOOR PLAN



FOUNDATION VENTILATION CALCULATION

1571 SQ. FT. OF CRAWL SPACE DIVIDED BY 1500 EQUALS 1.0 SQ. FT. OF NET FREE AREA REQUIRED. INSTALL 6 MIL POLY TO COVER ENTIRE CRAWL SPACE. LOCATE VENTS WITHIN 3'-0" OF EACH CORNER OF THE BUILDING TO PROVIDE CROSS-VENTILATION.

- STRUCTURAL NOTES:**
- 1) ALL FRAMING LUMBER TO BE #2 SPF (UNO).
 - 2) SQUARES DENOTE POINT LOADS WHICH REQUIRE SOLID BLOCKING TO GIRDER OR FOUNDATION.
 - 3) PIER AND CURTAIN FOUNDATION TO BE CONSTRUCTED PER SECTION R404.15 OF THE 2006 NCIBC: RC.
 - 4) INSTALL 1/2" ANCHOR BOLTS 6'-0" O.C. AND WITHIN 1'-0" FROM END OF EACH PLATE.



SIDE LOAD OPTION

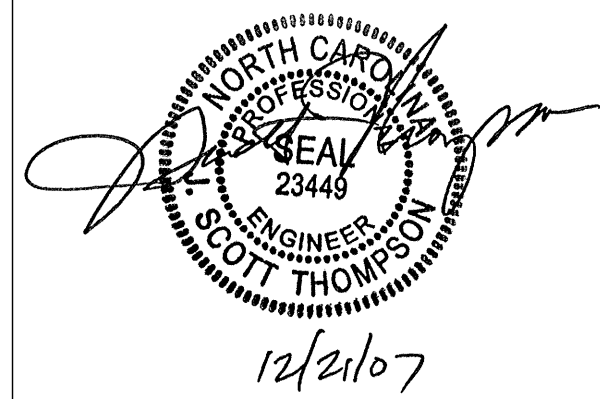
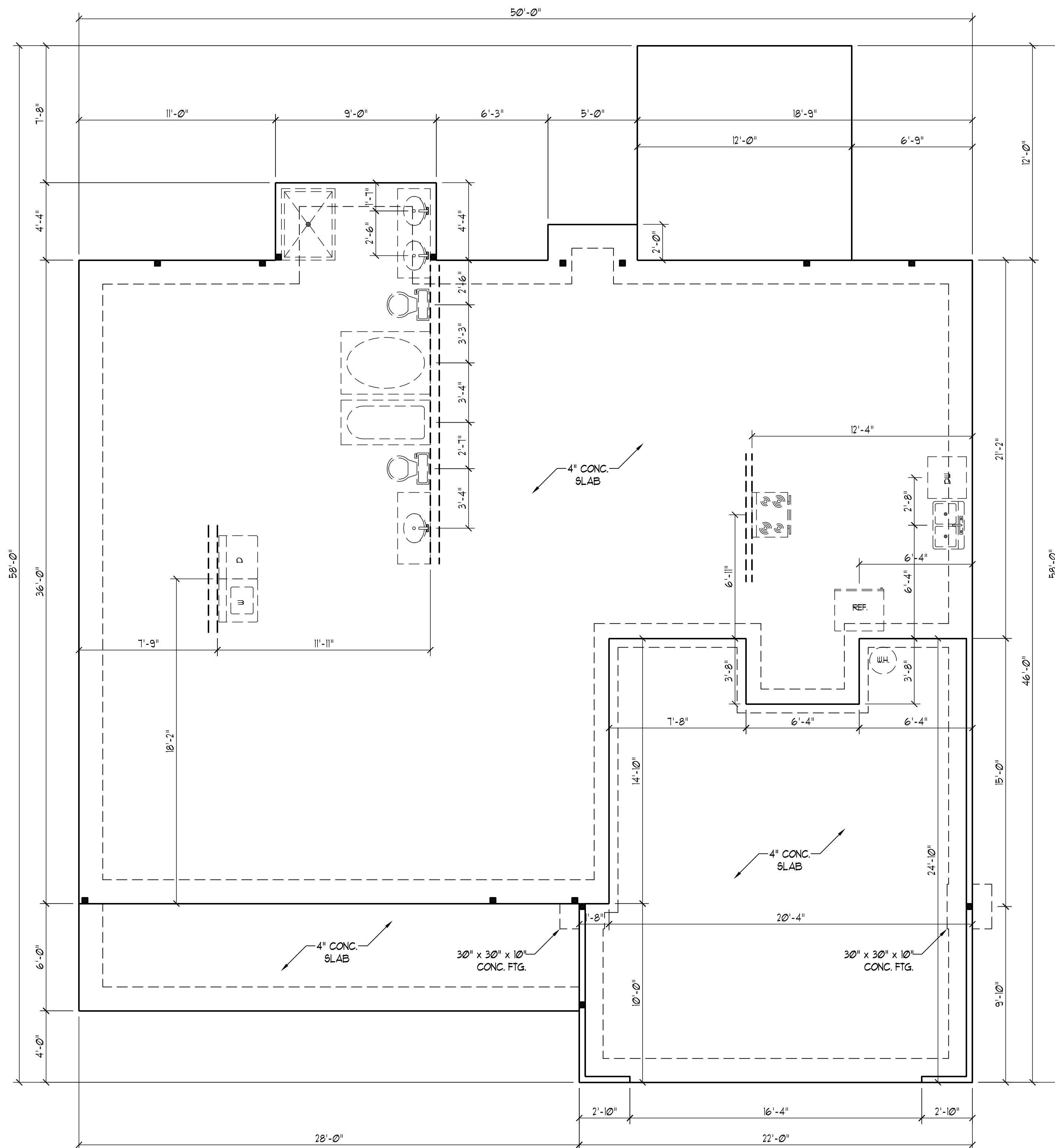
J.S. THOMPSON ENGINEERING, INC
 1033 WADE AVE., SUITE 104 RALEIGH, NC 27605
 PHONE: (919) 789-9919 FAX: (919) 789-9921

**CL 2277
 CAVINESS LAND**

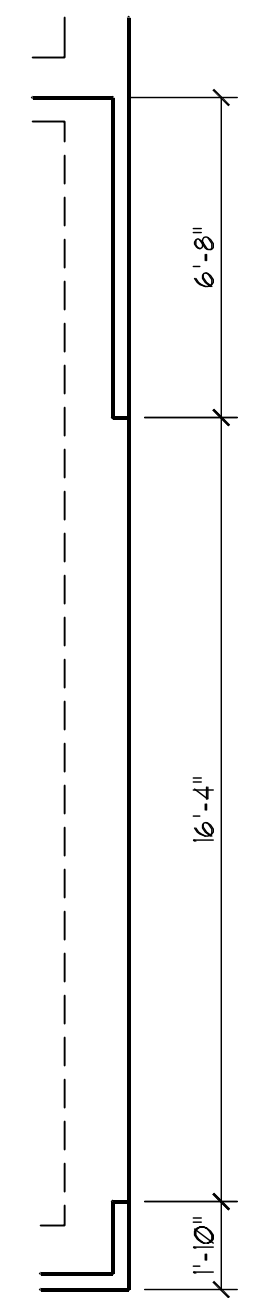
DATE: DECEMBER 13, 2007
 SCALE: 1/4"=1'-0"
 DRAWN BY: CM
 ENGINEERED BY: JBW

SHEET 4 OF 8
 FOUNDATION PLAN

SCOTT THOMPSON
 NORTH CAROLINA PROFESSIONAL ENGINEER
 23449
 12/21/07



STRUCTURAL NOTES:
SEE DETAILS PAGE FOR TYPICAL NOTES AND SECTIONS.



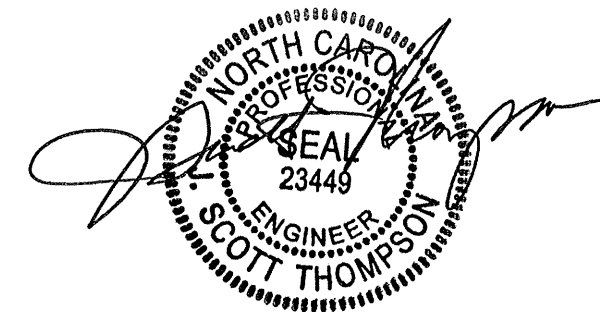
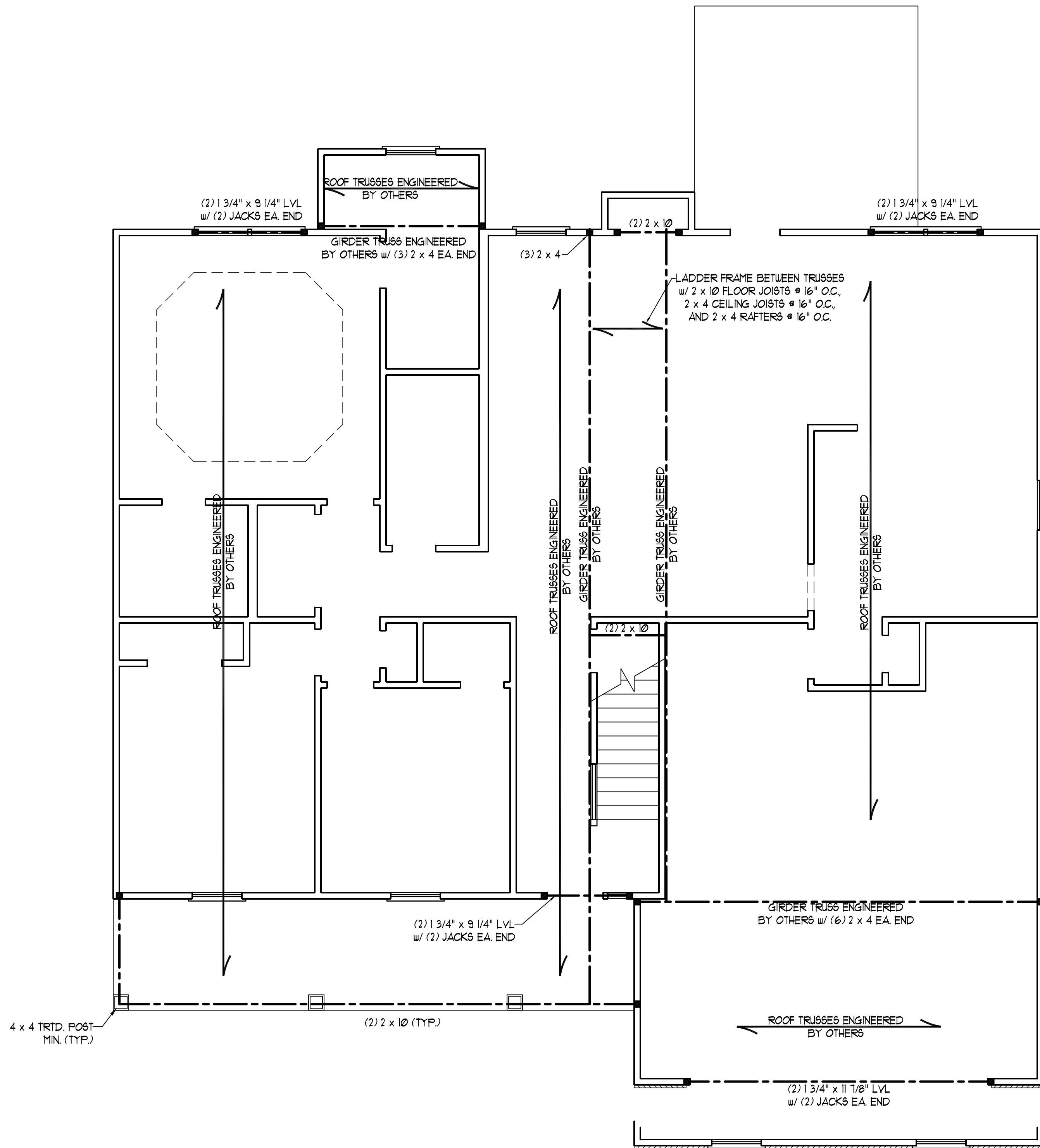
SIDE LOAD OPTION

J.S. THOMPSON ENGINEERING, INC
1033 WADE AVE., SUITE 104 RALEIGH, NC 27605
PHONE: (919) 789-9919 FAX: (919) 789-9921

**CL 2277
CAVINNESS LAND**

DATE: DECEMBER 13, 2007
SCALE: 1/4"=1'-0"
DRAWN BY: CM
ENGINEERED BY: JBW

SHEET: 5 OF 8
SLAB FOUNDATION PLAN



12/21/07

STRUCTURAL NOTES:

- 1) ALL FRAMING LUMBER TO BE #2 SPF (UNO).
- 2) ALL LOAD BEARING HEADERS TO BE (2) 2 x 10 (UNO).
- 3) SUPPORT WALLS PARALLEL TO ROOF TRUSSES PER MANUFACTURER'S SPECS.
- 4) ALL BEAMS ARE TO BE SUPPORTED WITH (2) 2 x 4 PER END (UNO).
- 5) SQUARES DENOTE POINT LOADS WHICH REQUIRE SOLID BLOCKING TO GIRDER OR FOUNDATION.

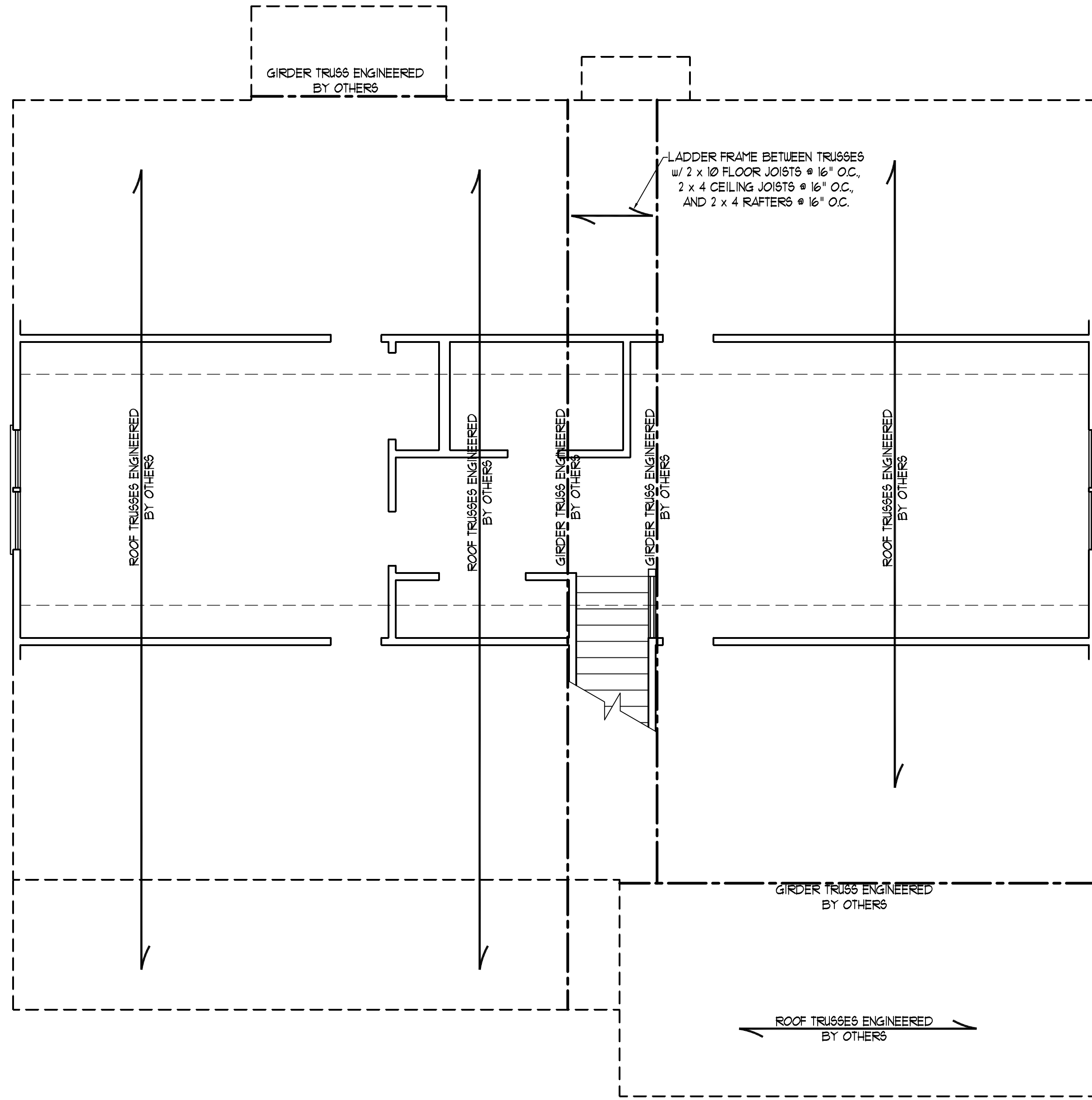
INSTALL 1/16" OSB SHEATHING ON INSIDE AND OUTSIDE OF BRACED WALLS. ATTACH OSB WITH 8d NAILS 4" O.C. ALONG EDGES AND 8" O.C. IN THE FIELD.

J.S. THOMPSON
ENGINEERING, INC
 1033 WADE AVE., SUITE 104 RALEIGH, NC 27605
 PHONE: (919) 789-9919 FAX: (919) 789-9921

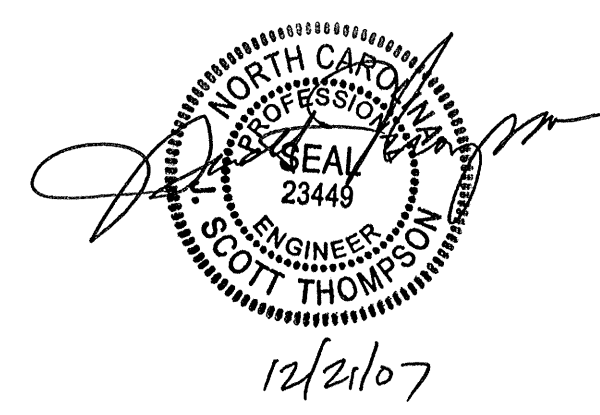
CL 2277
 CAVINESS LAND

DATE: DECEMBER 13, 2007
 SCALE: 1/4"=1'-0"
 DRAWN BY: CM
 ENGINEERED BY: JBW

SHEET 6 OF 8
 SECOND FLOOR
 FRAMING PLAN



LADDER FRAME BETWEEN TRUSSES
 w/ 2 x 10 FLOOR JOISTS @ 16" O.C.,
 2 x 4 CEILING JOISTS @ 16" O.C.,
 AND 2 x 4 RAFTERS @ 16" O.C.



- STRUCTURAL NOTES:**
- 1) ALL FRAMING LUMBER TO BE #2 SPF (UNO).
 - 2) ALL LOAD BEARING HEADERS TO BE (2) 2 x 10 (UNO).
 - 3) ALL BEAMS ARE TO BE SUPPORTED WITH (2) 2 x 4 PER END (UNO).
 - 4) SQUARES DENOTE POINT LOADS WHICH REQUIRE SOLID BLOCKING TO FOUNDATION.

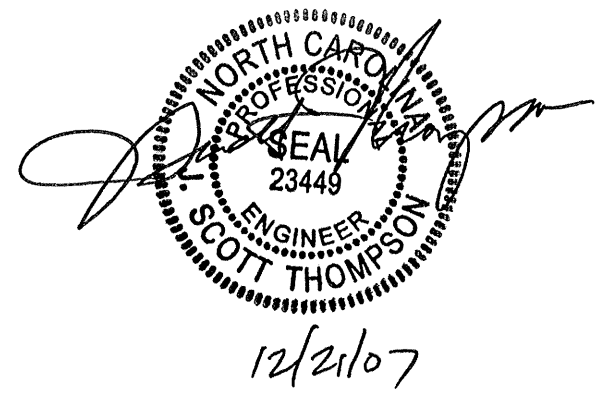
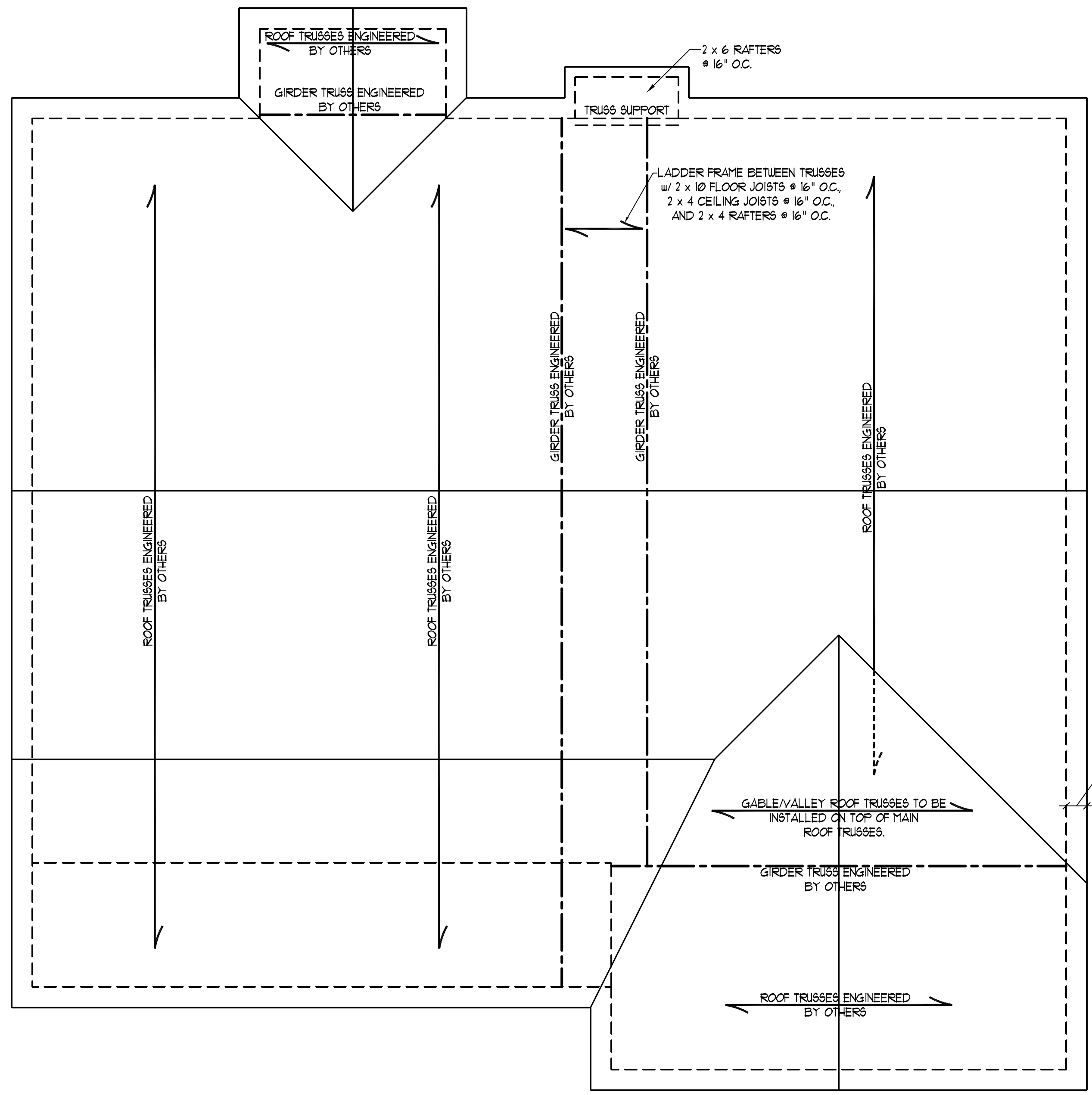
J.S. THOMPSON
ENGINEERING, INC
 1033 WADE AVE., SUITE 104 RALEIGH, NC 27605
 PHONE: (919) 789-9919 FAX: (919) 789-9921

CL 2277
 CAVINESS LAND

DATE: DECEMBER 13, 2007
 SCALE: 1/4"=1'-0"
 DRAWN BY: CM
 ENGINEERED BY: JBW

SHEET 7 OF 8
 ATTIC FRAMING PLAN

ATTIC VENT CALCULATION:
 2441 SQ. FT. OF ATTIC DIVIDED BY
 150 REQUIRES 16.3 SQ. FT. OF NET
 FREE VENTILATING AREA (MIN).



STRUCTURAL NOTES:

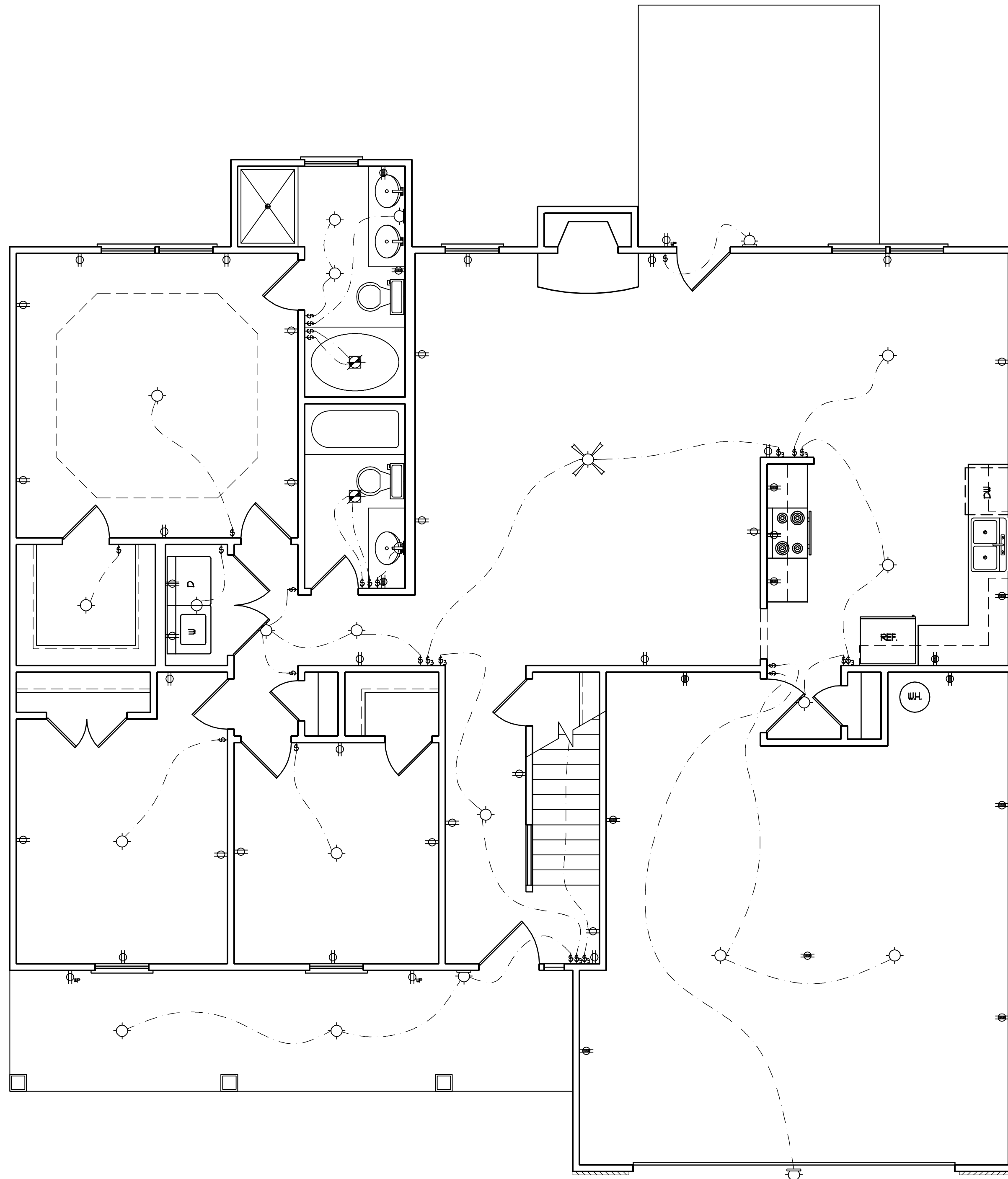
- 1) ALL STICK FRAMING LUMBER TO BE # 2 SPF (UNO).
- 2) OVER-FRAMED ROOF SECTIONS MAY BE CONSTRUCTED w/ 2 x 8 RIDGES, 2 x 6 RAFTERS @ 16" O.C. AND FLAT 2 x 10 VALLEYS.

**J.S. THOMPSON
 ENGINEERING, INC**
 1033 WADE AVE., SUITE 104 RALEIGH, NC 27605
 PHONE: (919) 789-9919 FAX: (919) 789-9921

CL 2277
 CAVINESS LAND

DATE: DECEMBER 13, 2007
 SCALE: 1/4"=1'-0"
 DRAWN BY: CM
 ENGINEERED BY: JBW

SHEET 8 OF 8
 ROOF PLAN



ELECTRICAL LEGEND

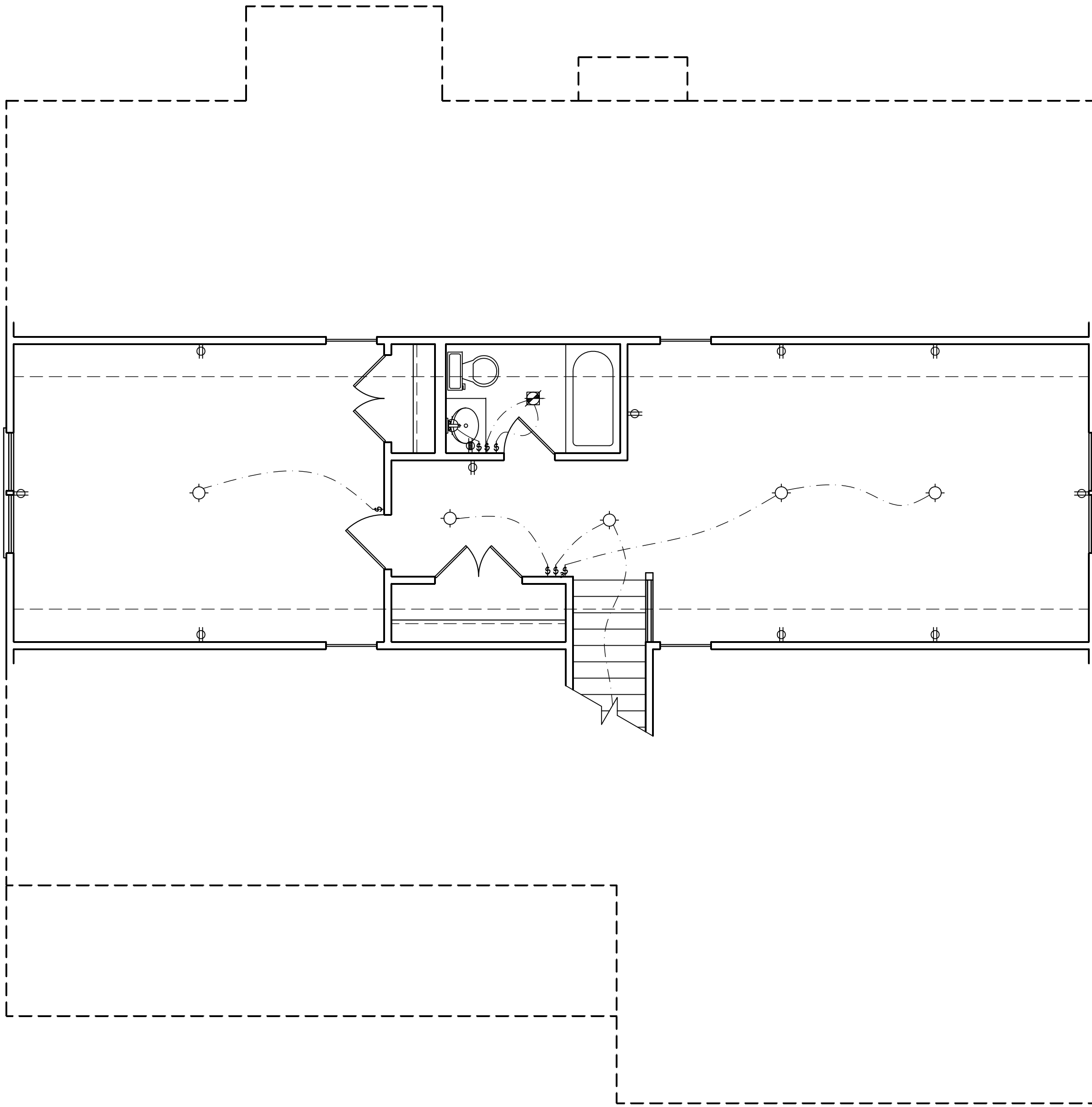
- ⊕ 110 V OUTLET
- ⊕ 110 V GFI OUTLET
- ⊕ 110 V SWITCHED OUTLET
- ⊕ 4-FLEX
- ⊕ COUNTER OR FLOOR MOUNTED
- ⊕ COUNTER OR FLOOR MOUNTED
- ⊕ WEATHERPROOF
- ⊕ 220 V OUTLET
- ⊕ 110 V DIRECT WIRE
- ⊕ 220 V DIRECT WIRE
- ⊕ SPECIAL PURPOSE (240 V, ETC.)
- ⊕ WALL MOUNT LIGHT
- ⊕ CEILING MOUNT LIGHT
- ⊕ PENDANT LIGHT
- ⊕ RECESSED CAN LIGHT
- ⊕ MINI CAN LIGHT
- ⊕ RECESSED SPOT LIGHT
- ⊕ FLUORESCENT LIGHT 2' x 4'
- ⊕ UNDERCABINET LIGHT
- ⊕ SWITCH
- ⊕₃ 3-WAY SWITCH
- ⊕₄ 4-WAY SWITCH
- ⊕_D DIMMER SWITCH
- ⊕_T TIMER SWITCH
- ⊕ TELEPHONE
- ⊕ NATURAL GAS
- ⊕ CABLE CONNECTION
- ⊕ RECESSED CEILING SPEAKER
- ⊕ VACUUM OUTLET
- ⊕ DOORBELL CHIME
- ⊕ THERMOSTAT
- ⊕ EXHAUST FAN
- ⊕ 24 HOUR TIMER
- ⊕ 110 V SMOKE DETECTOR
- ⊕ CEILING FAN
- ⊕ CEILING FAN W/ LIGHT

**J.S. THOMPSON
ENGINEERING, INC**
1033 WADE AVE., SUITE 104 RALEIGH, NC 27605
PHONE: (919) 789-9919 FAX: (919) 789-9921

**CL 2277
CAVINNESS LAND**

DATE: DECEMBER 13, 2007
SCALE: 1/4"=1'-0"
DRAWN BY: CM
ENGINEERED BY: JBW

SHEET: E-1
FIRST
FLOOR ELECTRICAL



ELECTRICAL LEGEND

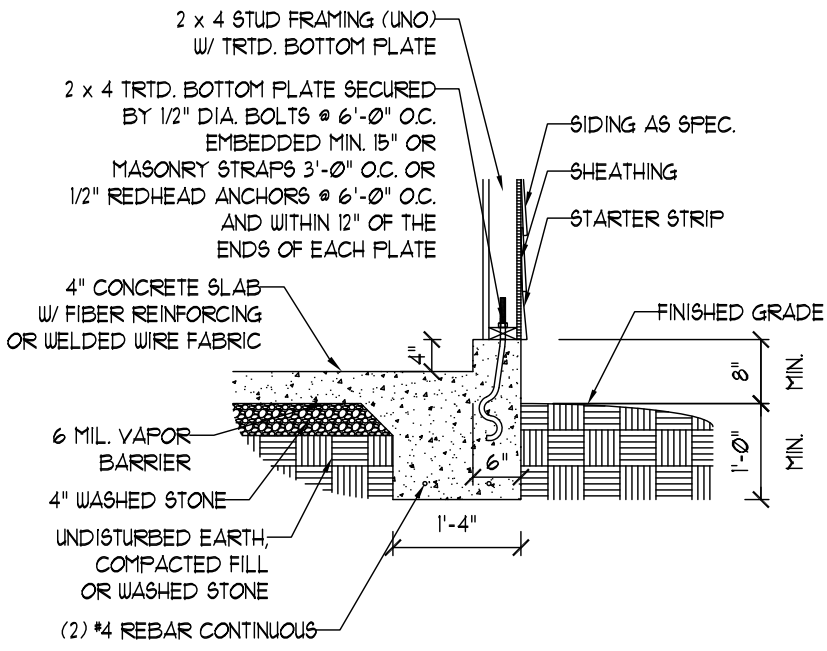
- ⊕ 110 V OUTLET
- ⊕ 110 V GFI OUTLET
- ⊕ 110 V SWITCHED OUTLET
- ⊕ 4-PLEX
- ⊕ COUNTER OR FLOOR MOUNTED
- ⊕ COUNTER OR FLOOR MOUNTED
- ⊕ WEATHERPROOF
- ⊕ 220 V OUTLET
- ⊕ 110 V DIRECT WIRE
- ⊕ 220 V DIRECT WIRE
- ⊕ SPECIAL PURPOSE (240 V, ETC.)
- ⊕ WALL MOUNT LIGHT
- ⊕ CEILING MOUNT LIGHT
- ⊕ PENDANT LIGHT
- ⊕ RECESSED CAN LIGHT
- ⊕ MINI CAN LIGHT
- ⊕ RECESSED SPOT LIGHT
- ⊕ FLUORESCENT LIGHT
- ⊕ UNDERCABINET LIGHT
- ⊕ SWITCH
- ⊕₃ 3-WAY SWITCH
- ⊕₄ 4-WAY SWITCH
- ⊕_D DIMMER SWITCH
- ⊕_T TIMER SWITCH
- ⊕ TELEPHONE
- ⊕ NATURAL GAS
- ⊕ CABLE CONNECTION
- ⊕ RECESSED CEILING SPEAKER
- ⊕ VACUUM OUTLET
- ⊕ DOORBELL CHIME
- ⊕ THERMOSTAT
- ⊕ EXHAUST FAN
- ⊕ 24 HOUR TIMER
- ⊕ 110 V SMOKE DETECTOR
- ⊕ CEILING FAN
- ⊕ CEILING FAN W/ LIGHT

**J.S. THOMPSON
ENGINEERING, INC**
1033 WADE AVE., SUITE 104 RALEIGH, NC 27605
PHONE: (919) 789-9919 FAX: (919) 789-9921

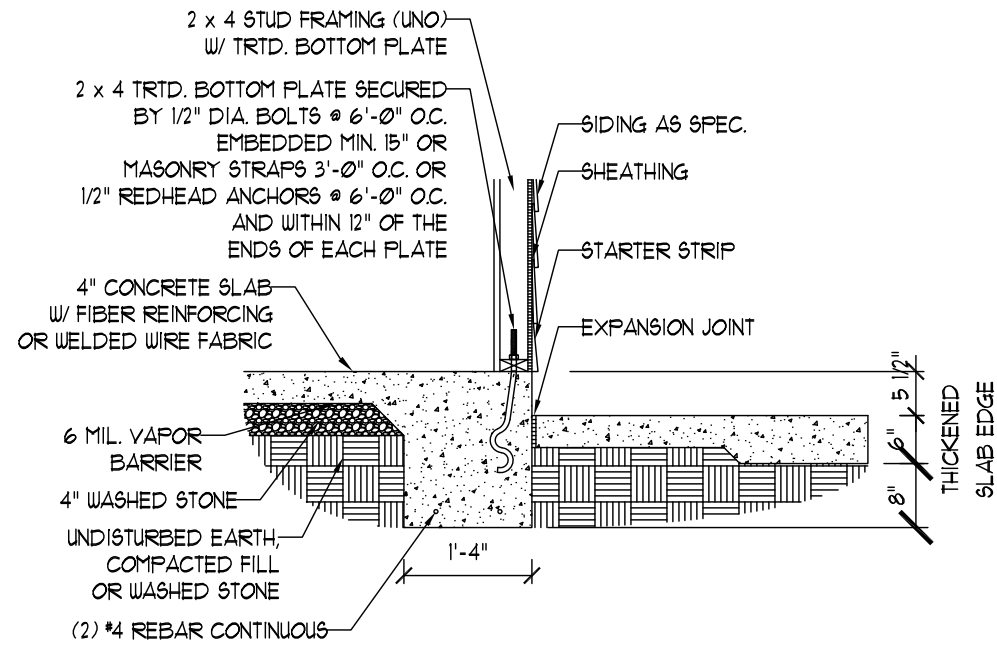
CL 2277
CAVINNESS LAND

DATE: DECEMBER 13, 2007
SCALE: 1/4"=1'-0"
DRAWN BY: CM
ENGINEERED BY: JBW

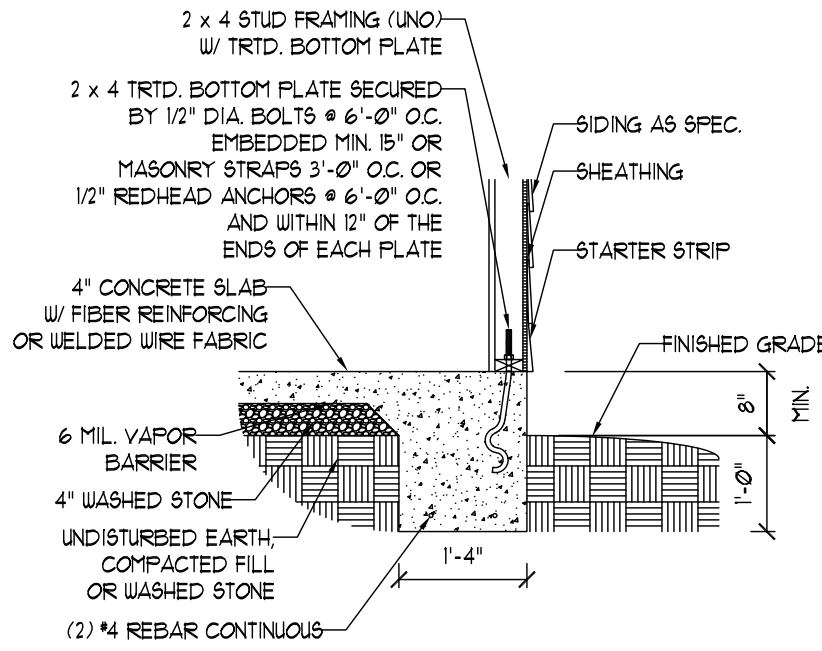
SHEET: E-2
SECOND FLOOR ELECTRICAL



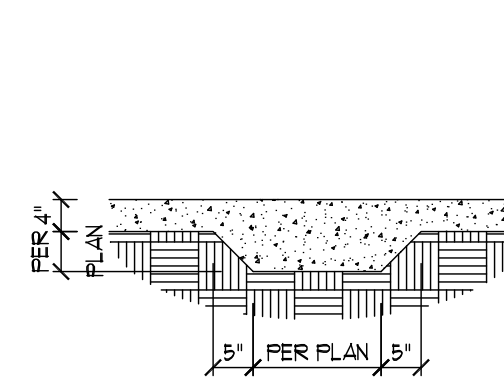
GARAGE CURB DETAIL



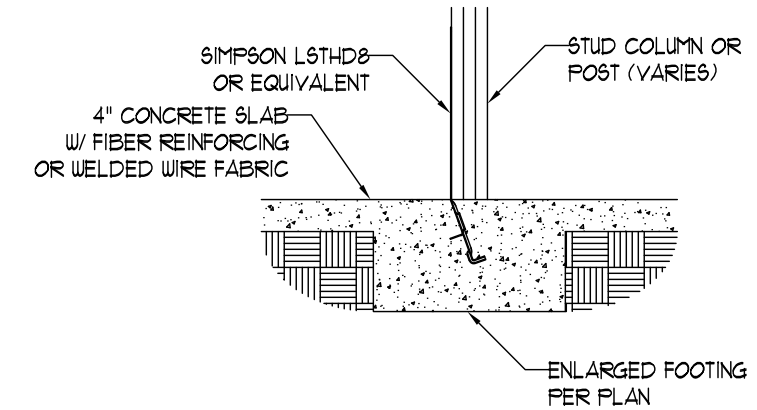
PORCH SLAB DETAIL



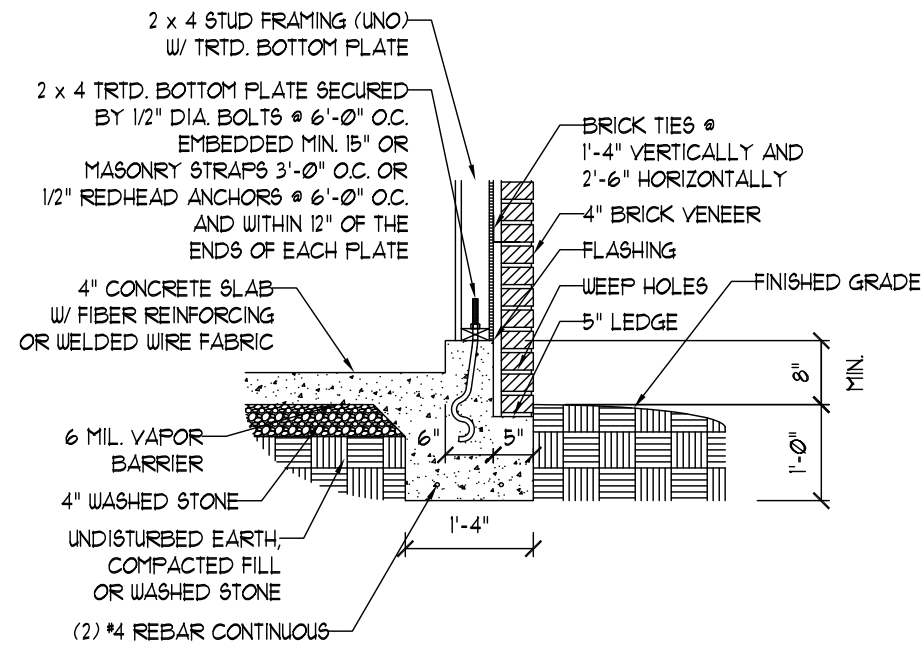
TYPICAL SLAB DETAIL



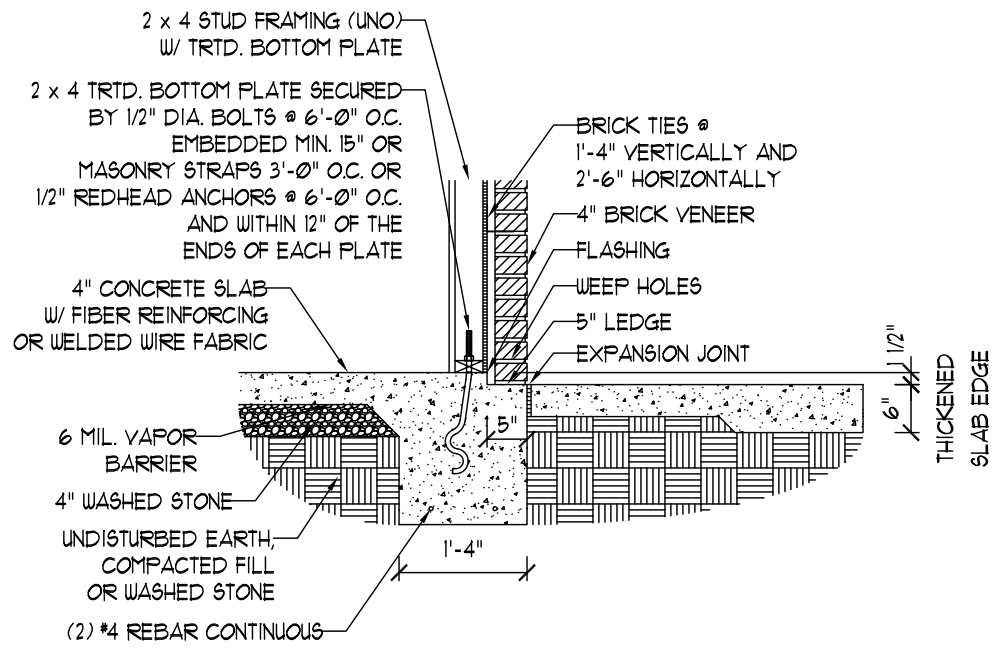
THICKENED SLAB DETAIL



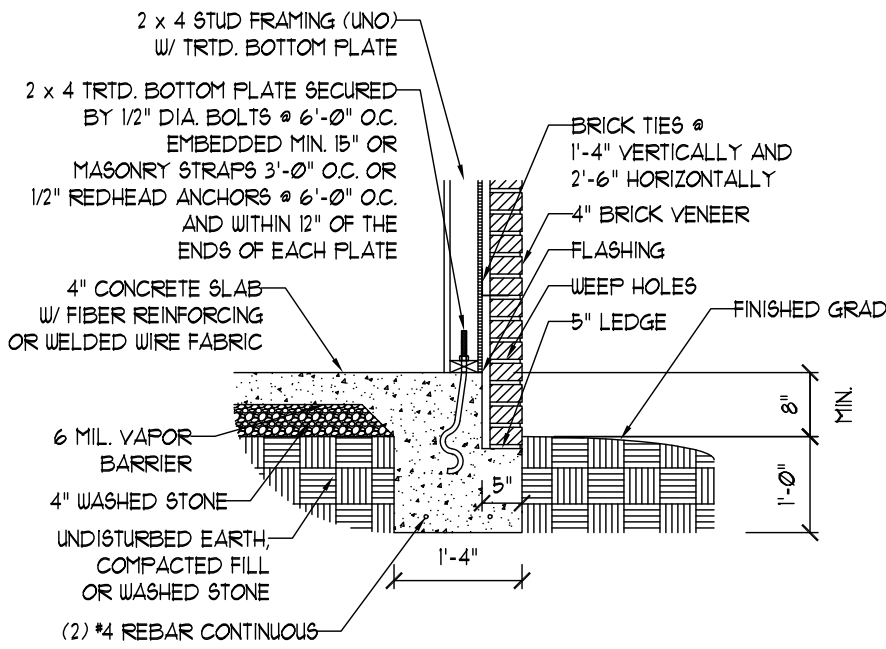
TYPICAL COLUMN CONNECTION DETAIL



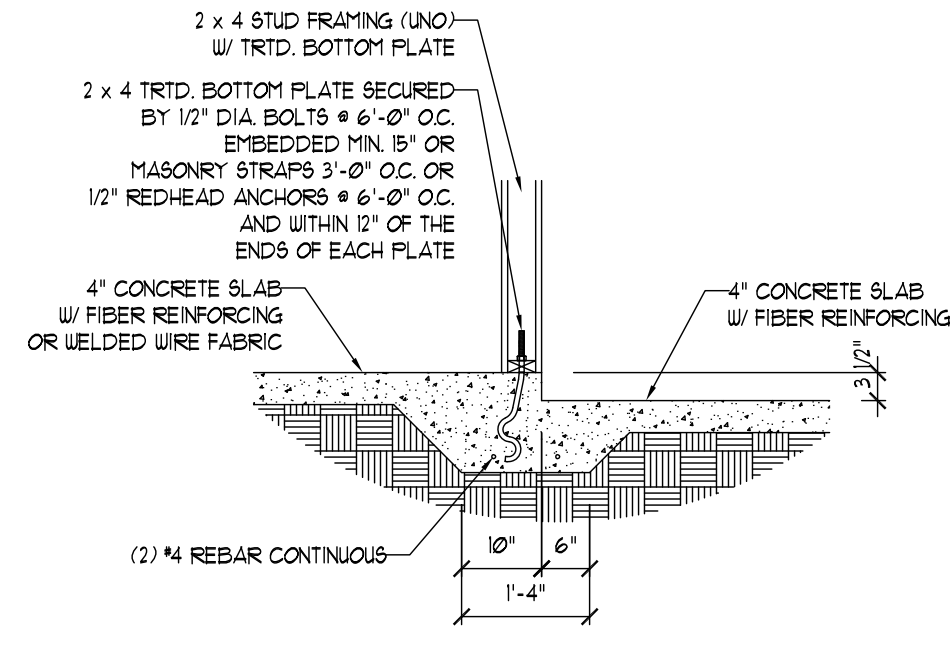
GARAGE CURB BRICK LEDGE DETAIL



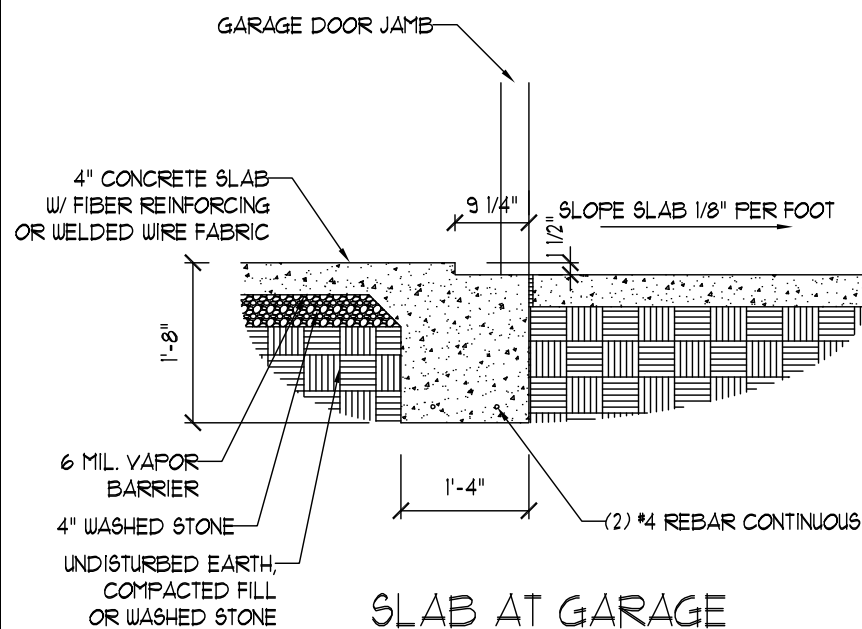
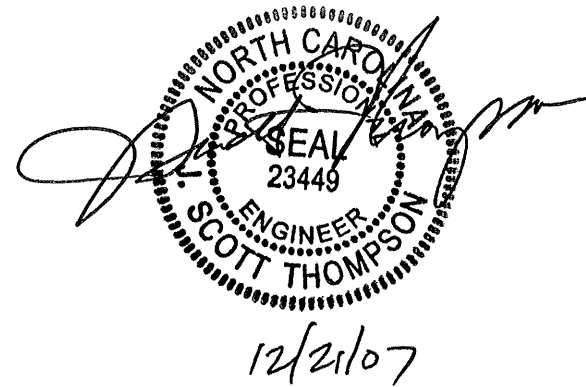
PORCH SLAB W/ BRICK DETAIL



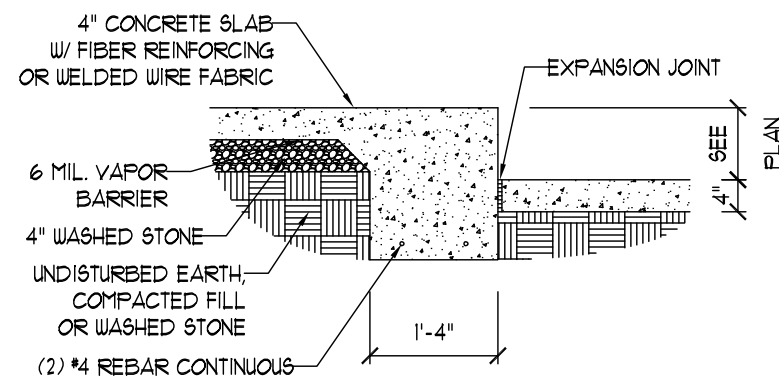
BRICK LEDGE DETAIL



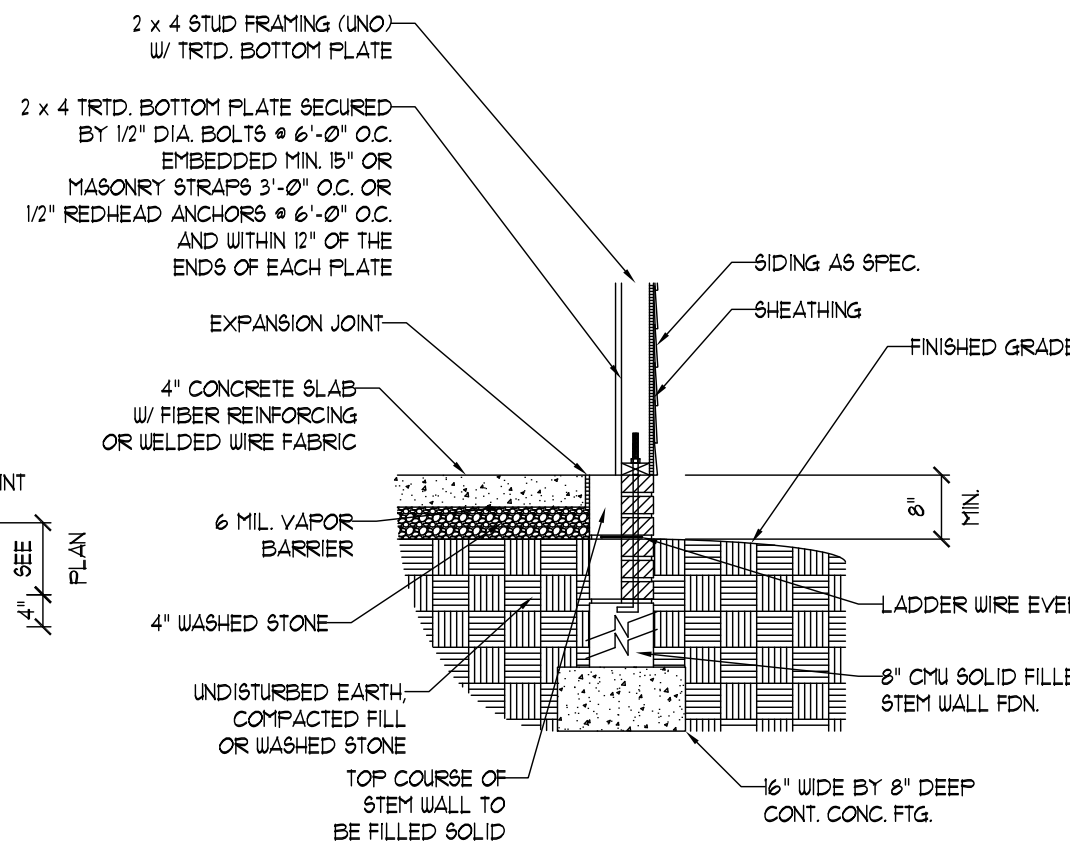
STEP IN GARAGE DETAIL



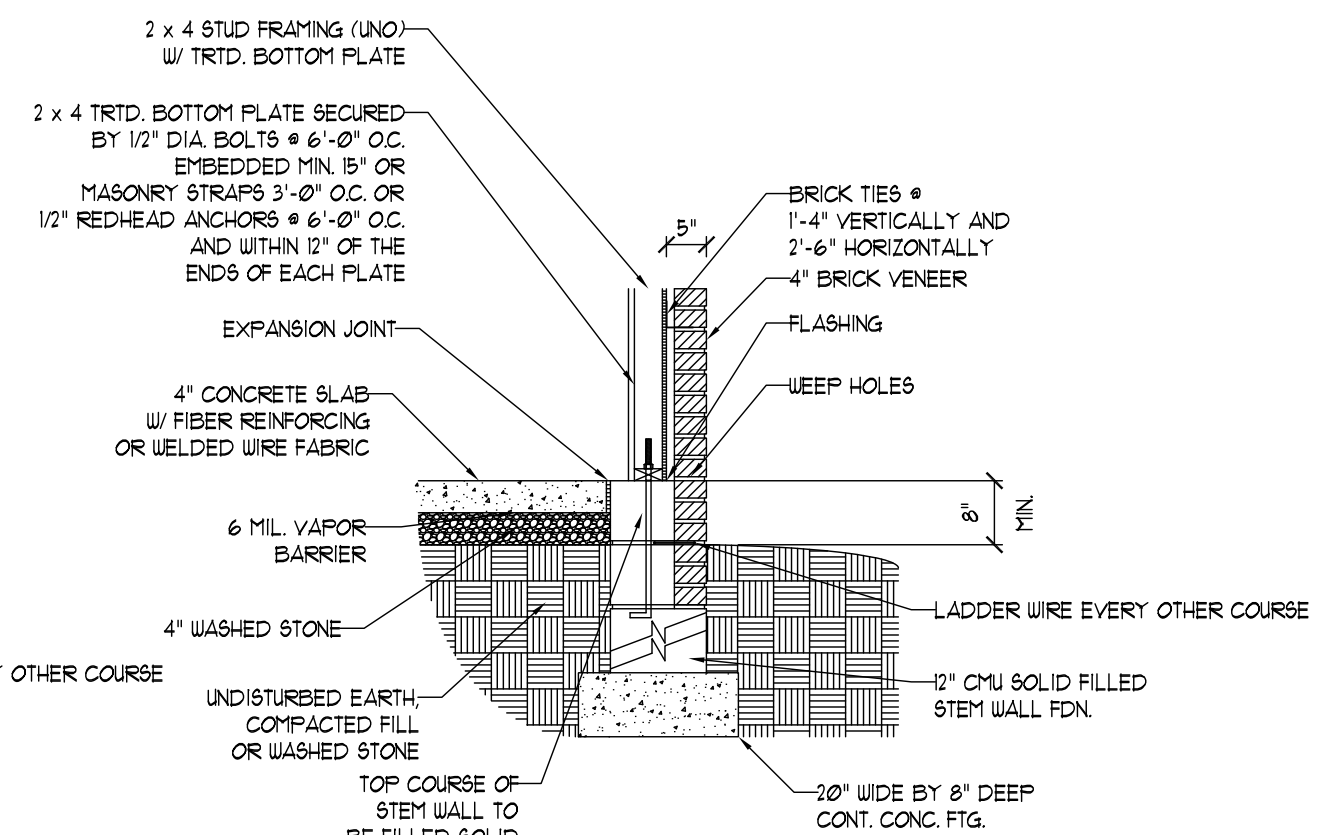
SLAB AT GARAGE DOOR DETAIL



SLAB FLOOR CHANGE DETAIL



STEM WALL FDN. DETAIL



STEM WALL FDN. W/ BRICK DETAIL

J.S. THOMPSON
ENGINEERING, INC.
1033 WADE AVE., SUITE 104 RALEIGH, NC 27605
PHONE: (919) 789-9919 FAX: (919) 789-9921

MONOLITHIC
SLAB DETAILS

DATE: DECEMBER 19, 2007
SCALE: 1/4"=1'-0"
DRAWN BY: TSZ
ENGINEERED BY: TSZ

SHEET: DETAILS