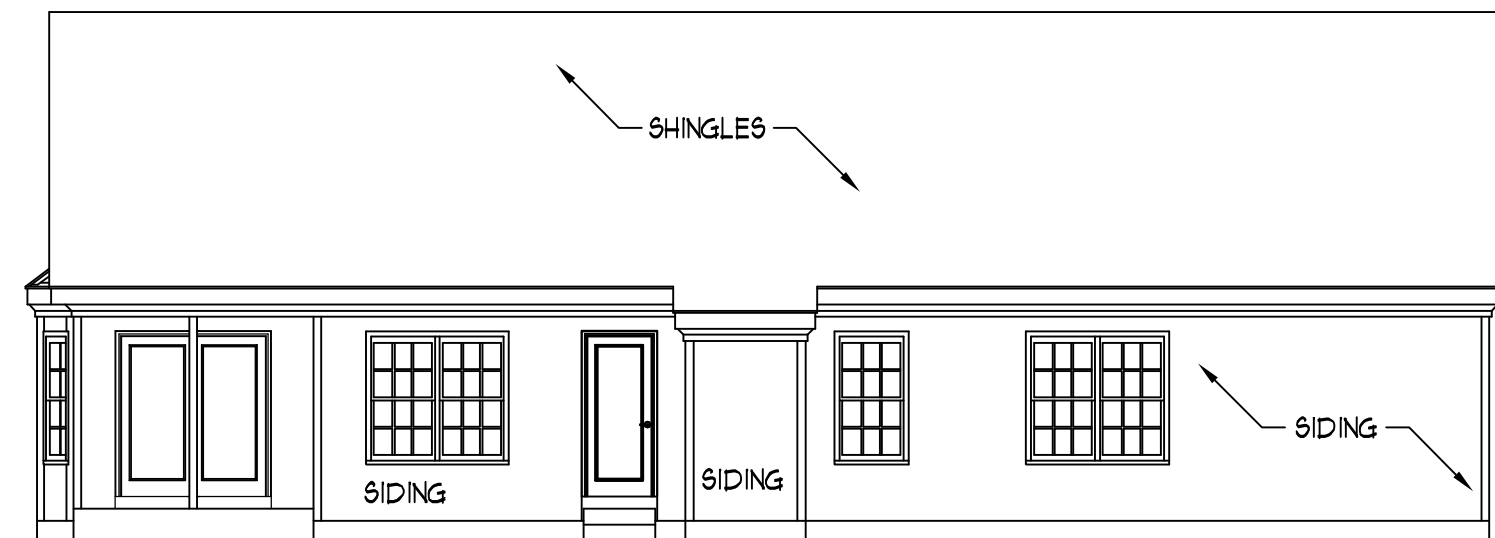


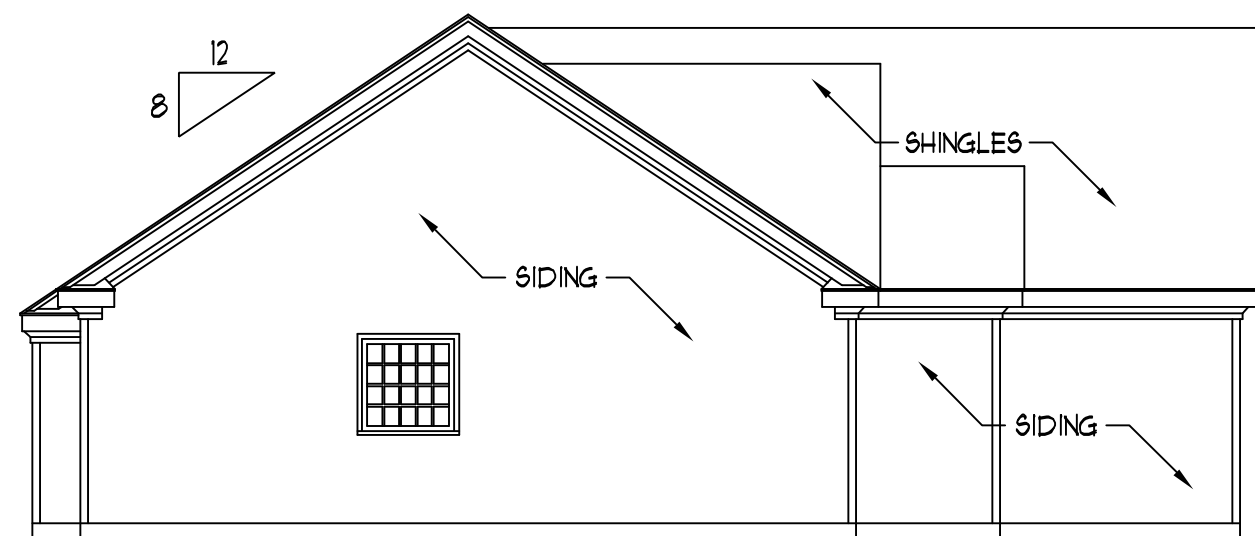
FRONT ELEVATION

SCALE: 1/4" = 1'-0"



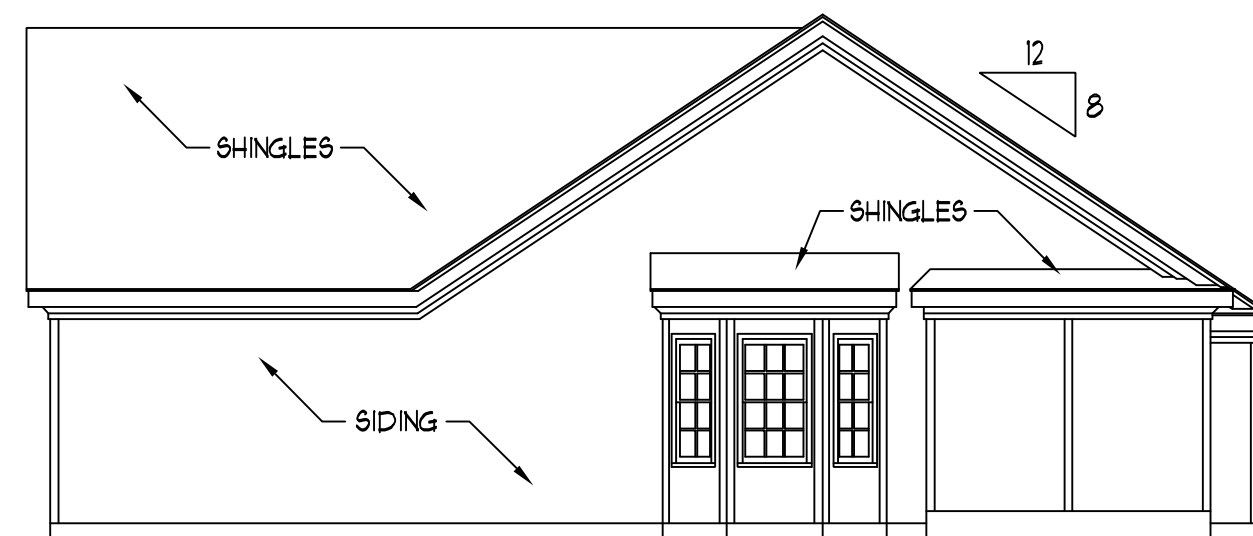
REAR ELEVATION

SCALE: 1/8" = 1'-0"



LEFT ELEVATION

SCALE: 1/8" = 1'-0"



RIGHT ELEVATION

SCALE: 1/8" = 1'-0"

NOTES:

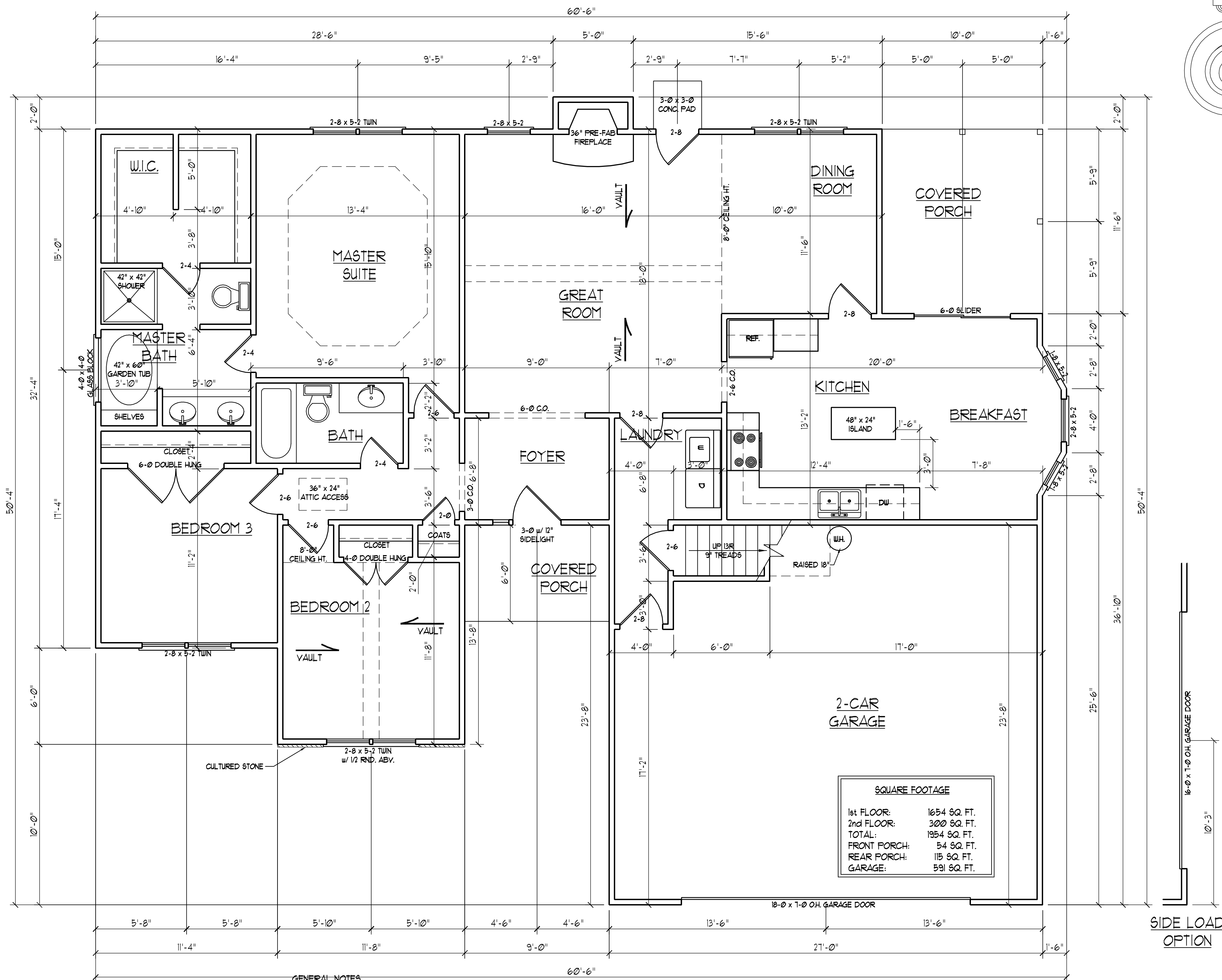
- 1) STRUCTURAL DESIGN PER NORTH CAROLINA STATE BUILDING CODE: RESIDENTIAL CODE, 2006 EDITION.
- 2) INSTALL 1/2" ANCHOR BOLTS 6'-0" O.C. AND WITHIN 1'-0" FROM END OF EACH PLATE.
- 3) MEAN ROOF HEIGHT IS LESS THAN 30 FEET.
- 4) EXTERIOR WALLS DESIGNED FOR 100 MPH WINDS.
- 5) WALL CLADDING DESIGNED FOR 241 PSF (POSITIVE AND NEGATIVE).
- 6) ROOF CLADDING DESIGNED FOR 210 PSF (POSITIVE AND NEGATIVE) FOR ROOF PITCHES 7/12 TO 12/12 AND 34.8 PSF (POSITIVE AND NEGATIVE) FOR ROOF PITCHES 2 25/12 TO 7/12.
- 7) WALLS TO BE BRACED IN ACCORDANCE WITH SECTION R602.10 OF THE NORTH CAROLINA STATE BUILDING CODE: RESIDENTIAL CODE, 2006 EDITION.

**J.S. THOMPSON  
ENGINEERING, INC**  
1033 WADE AVE., SUITE 104 RALEIGH, NC 27605  
PHONE: (919) 789-9919 FAX: (919) 789-9921

CL 1954  
CAVINESS LAND

DATE: DECEMBER 7, 2007  
SCALE: AS NOTED  
DRAWN BY: CM  
ENGINEERED BY: TSZ /DK

SHEET 1 OF 7  
ELEVATIONS



SQUARE FOOTAGE	
1st FLOOR:	1654 SQ. FT.
2nd FLOOR:	300 SQ. FT.
TOTAL:	1954 SQ. FT.
FRONT PORCH:	54 SQ. FT.
REAR PORCH:	115 SQ. FT.
GARAGE:	591 SQ. FT.

- GENERAL NOTES**
- 1) ALL WORK SHALL BE PERFORMED IN ACCORDANCE WITH ALL APPLICABLE NATIONAL, STATE, AND LOCAL CODES AND REGULATIONS.
  - 2) CONTRACTOR SHALL VERIFY ALL CONDITIONS AND DIMENSIONS AT SITE BEFORE BEGINNING CONSTRUCTION. ANY DISCREPANCIES SHALL BE REPORTED TO J.S. THOMPSON ENGINEERING, INC. FOR JUSTIFICATION AND/OR CORRECTION BEFORE PROCEEDING WITH WORK. CONTRACTORS SHALL ASSUME RESPONSIBILITY FOR ERRORS THAT ARE NOT REPORTED PRIOR TO CONSTRUCTION.
  - 3) ALL DIMENSIONS SHOULD BE READ OR CALCULATED AND NEVER SCALED.
  - 4) CONTRACTOR SHALL INSURE COMPATIBILITY OF THE BUILDING WITH ALL SITE REQUIREMENTS.

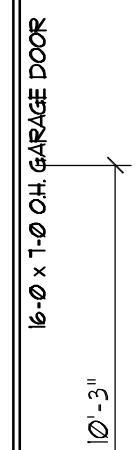
**J.S. THOMPSON  
ENGINEERING, INC.**  
1033 WADE AVE., SUITE 104 RALEIGH, NC 27605  
PHONE: (919) 789-9919 FAX: (919) 789-9921

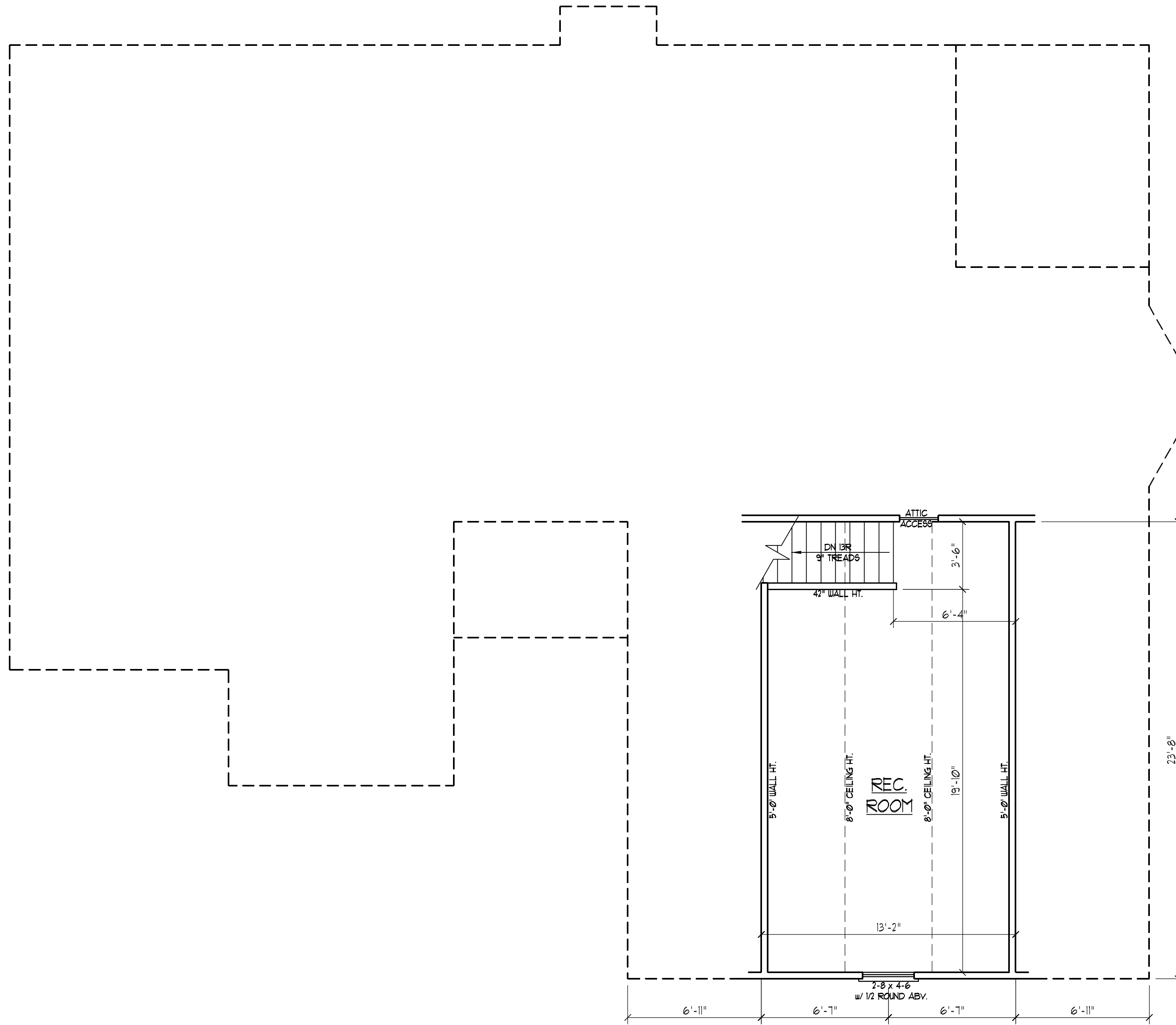
**CL 1954  
CAVINNESS LAND**

DATE: DECEMBER 7, 2007  
SCALE: 1/4"=1'-0"  
DRAWN BY: CM  
ENGINEERED BY: TSZ / DK

SHEET 2 OF 7  
FIRST FLOOR PLAN

SIDE LOAD  
OPTION



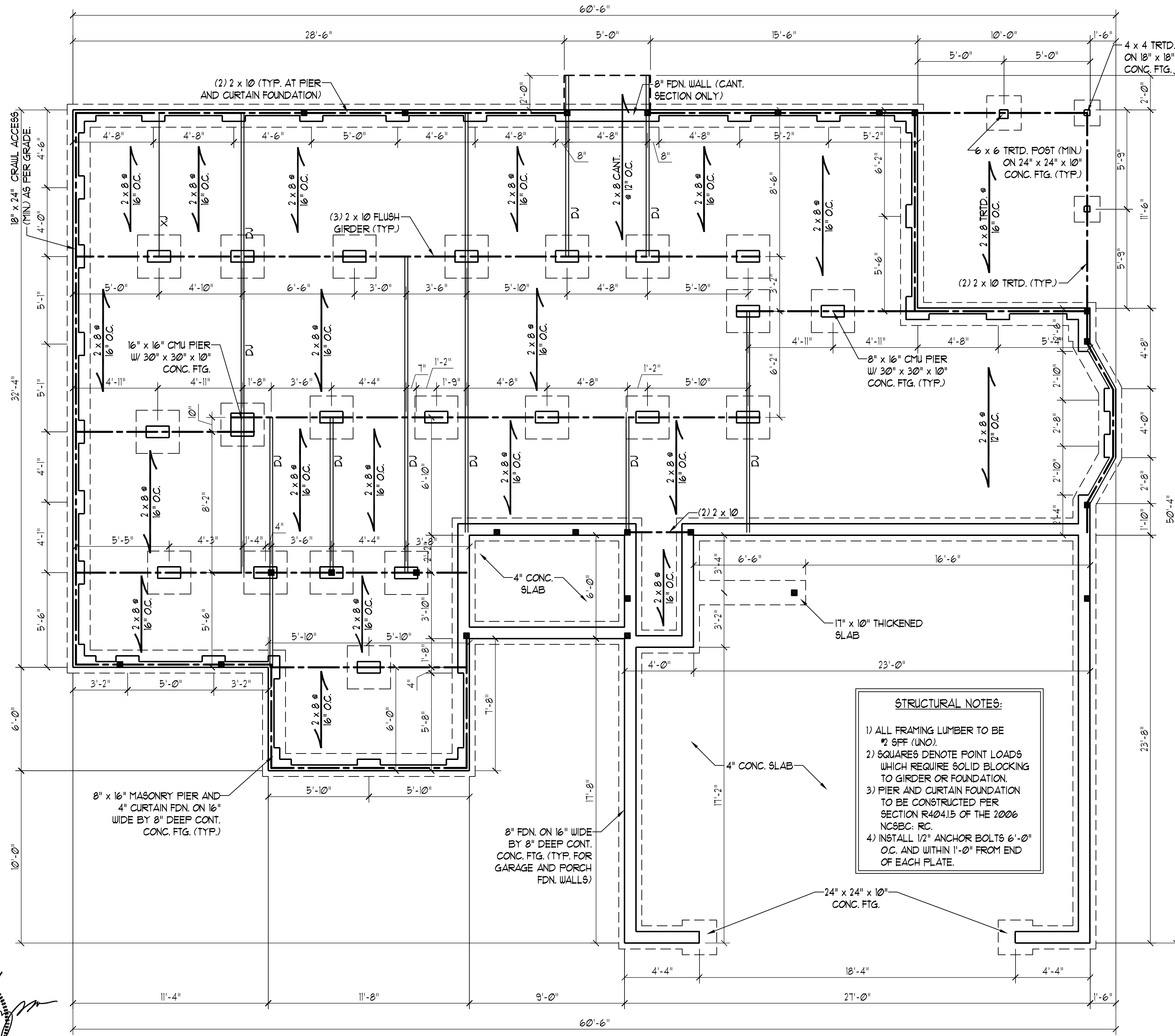


**J.S. THOMPSON**  
**ENGINEERING, INC**  
 1033 WADE AVE., SUITE 104 RALEIGH, NC 27605  
 PHONE: (919) 789-9919 FAX: (919) 789-9921

CL 1954  
 CAVINESS LAND

DATE: DECEMBER 7, 2007  
 SCALE: 1/4"=1'-0"  
 DRAWN BY: CM  
 ENGINEERED BY: TSZ /DK

SHEET 3 OF 7  
 SECOND FLOOR PLAN

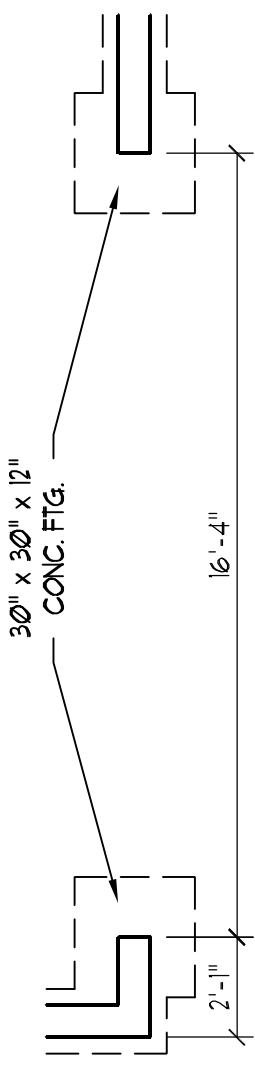


**FOUNDATION VENTILATION CALCULATION**  
 1748 SQ. FT. OF CRAWL SPACE DIVIDED BY 1500 EQUALS 1.2 SQ. FT. OF NET FREE AREA REQUIRED. INSTALL 6 MIL POLY TO COVER ENTIRE CRAWL SPACE. LOCATE VENTS WITHIN 3'-0" OF EACH CORNER OF THE BUILDING TO PROVIDE CROSS-VENTILATION.

**J.S. THOMPSON ENGINEERING, INC.**  
 1033 WADE AVE., SUITE 104 RALEIGH, NC 27605  
 PHONE: (919) 789-9919 FAX: (919) 789-9921

**CL 1954 CAVINESS LAND**

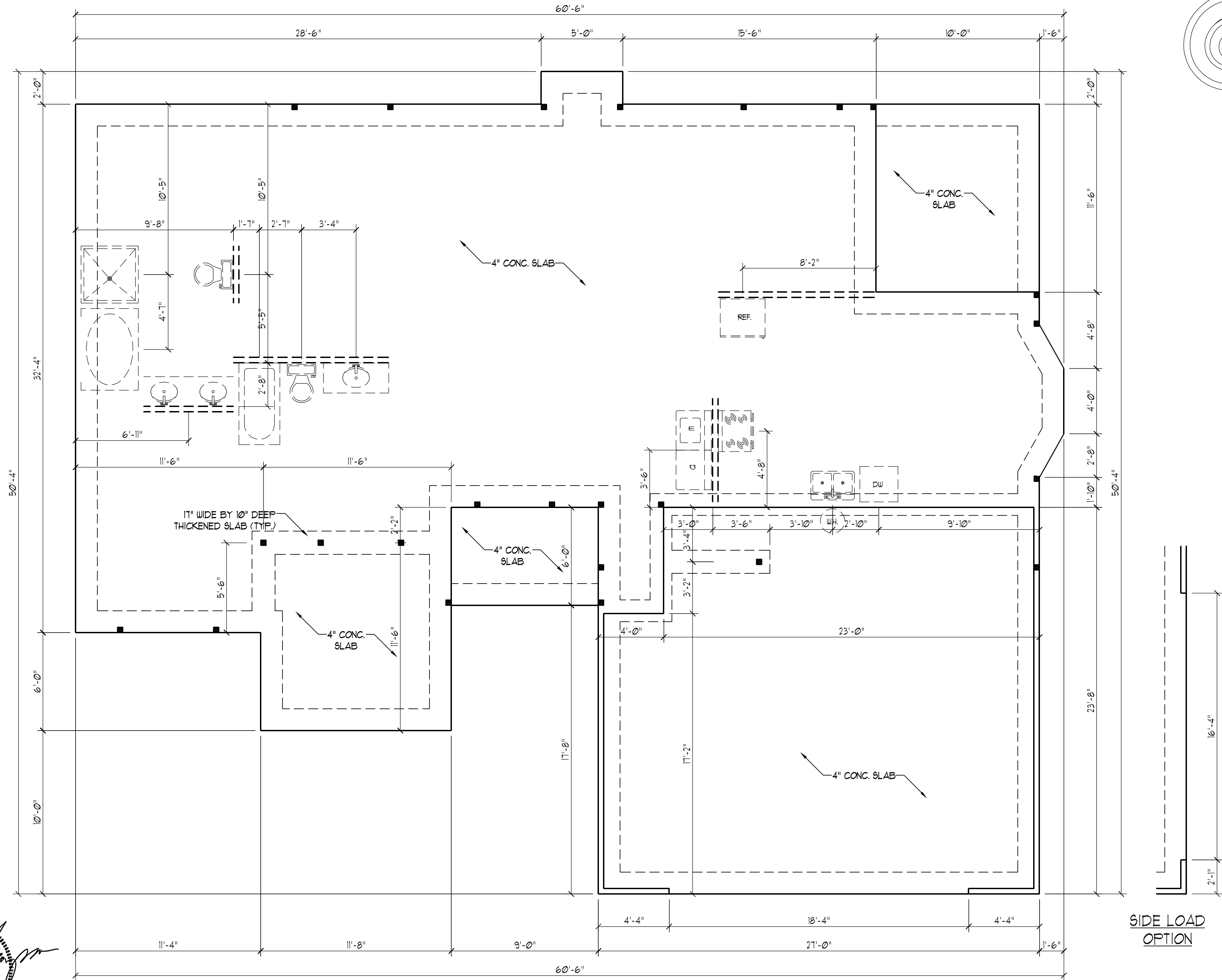
**STRUCTURAL NOTES:**  
 1) ALL FRAMING LUMBER TO BE #2 SPF (UNO).  
 2) SQUARES DENOTE POINT LOADS WHICH REQUIRE SOLID BLOCKING TO GIRDER OR FOUNDATION.  
 3) PIER AND CURTAIN FOUNDATION TO BE CONSTRUCTED PER SECTION R404.15 OF THE 2006 NCBC. RC.  
 4) INSTALL 1/2" ANCHOR BOLTS 6'-0" O.C. AND WITHIN 1'-0" FROM END OF EACH PLATE.



**Professional Engineer Seal**  
 NORTH CAROLINA PROFESSIONAL ENGINEER  
 SCOTT THOMPSON  
 23449  
 12/21/07

DATE: DECEMBER 7, 2007  
 SCALE: 1/4"=1'-0"  
 DRAWN BY: CM  
 ENGINEERED BY: TSZ, JDK

SHEET 4 OF 7  
 FOUNDATION PLAN



**J.S. THOMPSON  
ENGINEERING, INC**  
1033 WADE AVE., SUITE 104 RALEIGH, NC 27605  
PHONE: (919) 789-9919 FAX: (919) 789-9921

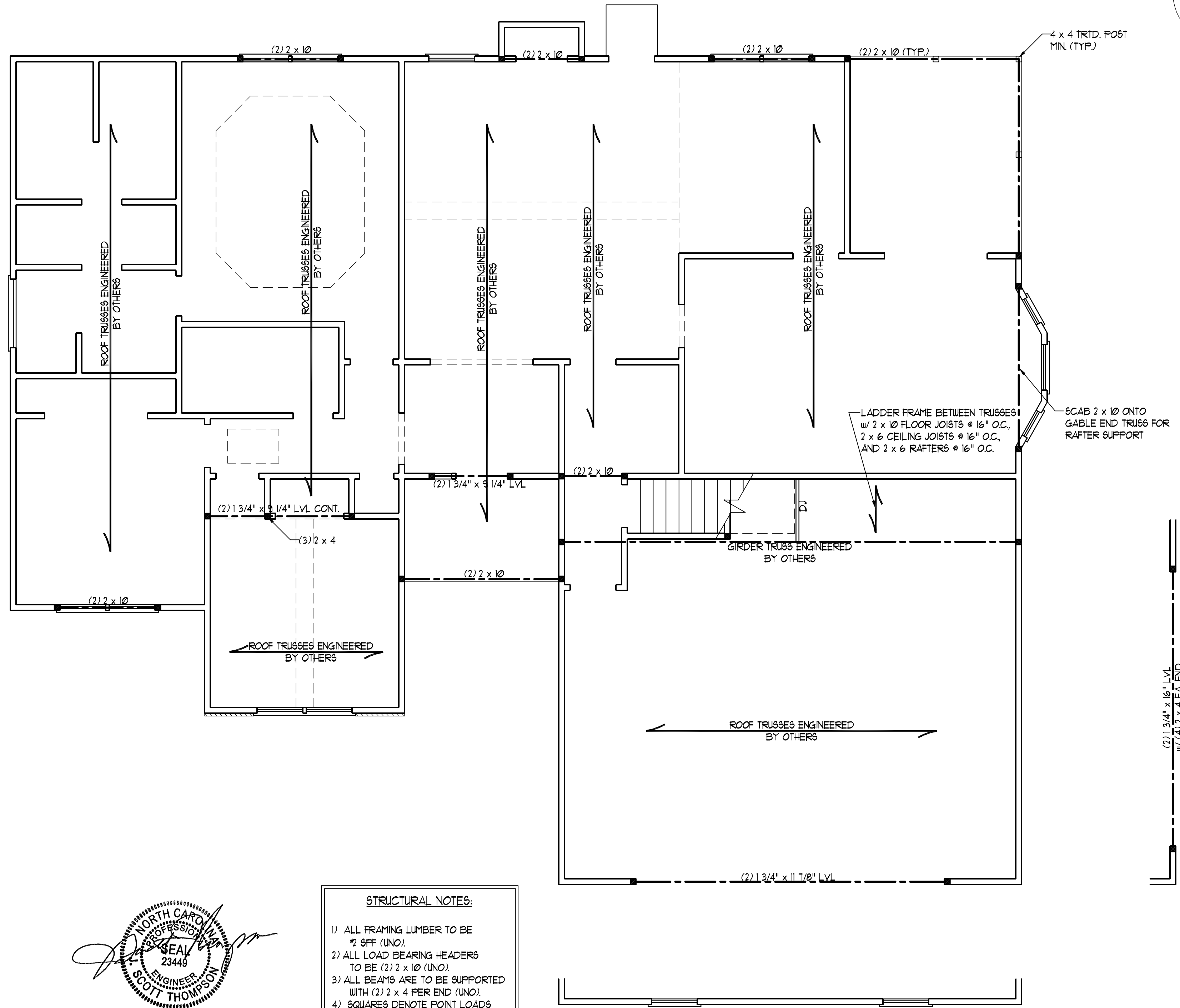
**CL 1954  
CAVINESS LAND**

DATE: DECEMBER 7, 2007  
SCALE: 1/4"=1'-0"  
DRAWN BY: CM  
ENGINEERED BY: TSZ / DK

SHEET 4 OF 7  
SLAB  
FOUNDATION PLAN

**STRUCTURAL NOTES:**  
SEE DETAILS PAGE FOR TYPICAL  
NOTES AND SECTIONS.

*Scott Thompson*  
NORTH CAROLINA  
PROFESSIONAL  
SEAL  
23449  
ENGINEER  
SCOTT THOMPSON  
12/21/07



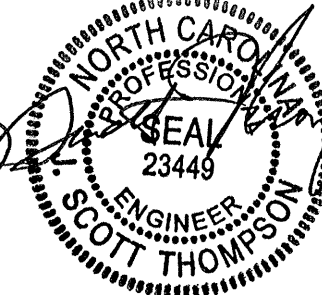
**J.S. THOMPSON  
ENGINEERING, INC**  
1033 WADE AVE., SUITE 104 RALEIGH, NC 27605  
PHONE: (919) 789-9919 FAX: (919) 789-9921

**CL 1954  
CAVINNESS LAND**

DATE: DECEMBER 7, 2007  
SCALE: 1/4"=1'-0"  
DRAWN BY: CM  
ENGINEERED BY: TSZ /DK

SHEET 5 OF 7  
SECOND FLOOR  
FRAMING PLAN

- STRUCTURAL NOTES:**
- 1) ALL FRAMING LUMBER TO BE #2 SPF (UNO).
  - 2) ALL LOAD BEARING HEADERS TO BE (2) 2 x 10 (UNO).
  - 3) ALL BEAMS ARE TO BE SUPPORTED WITH (2) 2 x 4 PER END (UNO).
  - 4) SQUARES DENOTE POINT LOADS WHICH REQUIRE SOLID BLOCKING TO GIRDER OR FOUNDATION.

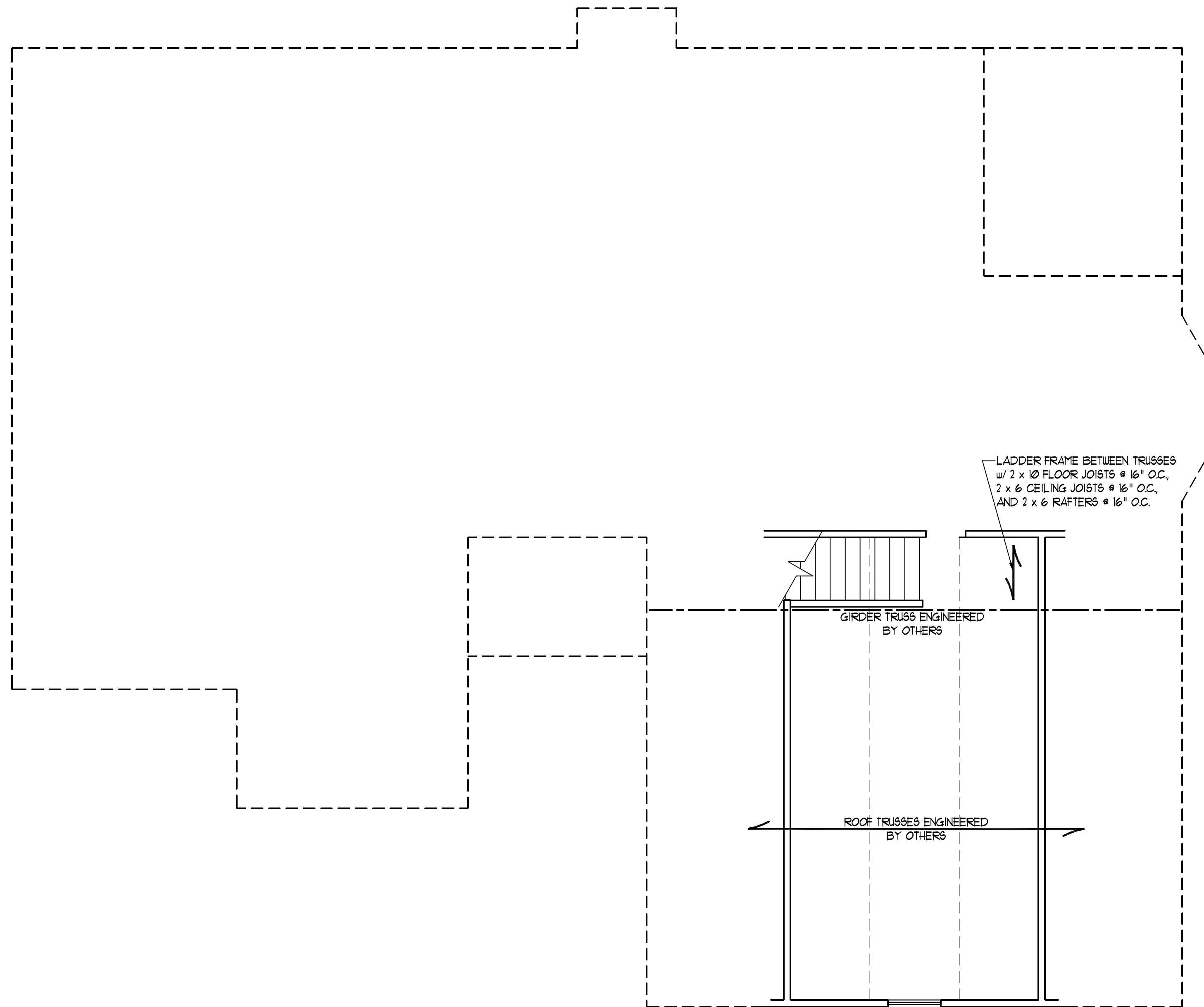
*Scott Thompson*  
  
 12/21/07

(2) 1 3/4" x 16" LVL  
w/ (4) 2 x 4 EA. END

LADDER FRAME BETWEEN TRUSSES  
w/ 2 x 10 FLOOR JOISTS @ 16" O.C.,  
2 x 6 CEILING JOISTS @ 16" O.C.,  
AND 2 x 6 RAFTERS @ 16" O.C.

SCAB 2 x 10 ONTO  
GABLE END TRUSS FOR  
RAFTER SUPPORT

4 x 4 TRID. POST  
MIN. (TYP.)



**J.S. THOMPSON  
ENGINEERING, INC**  
1033 WADE AVE., SUITE 104 RALEIGH, NC 27605  
PHONE: (919) 789-9919 FAX: (919) 789-9921

CL 1954  
CAVINESS LAND

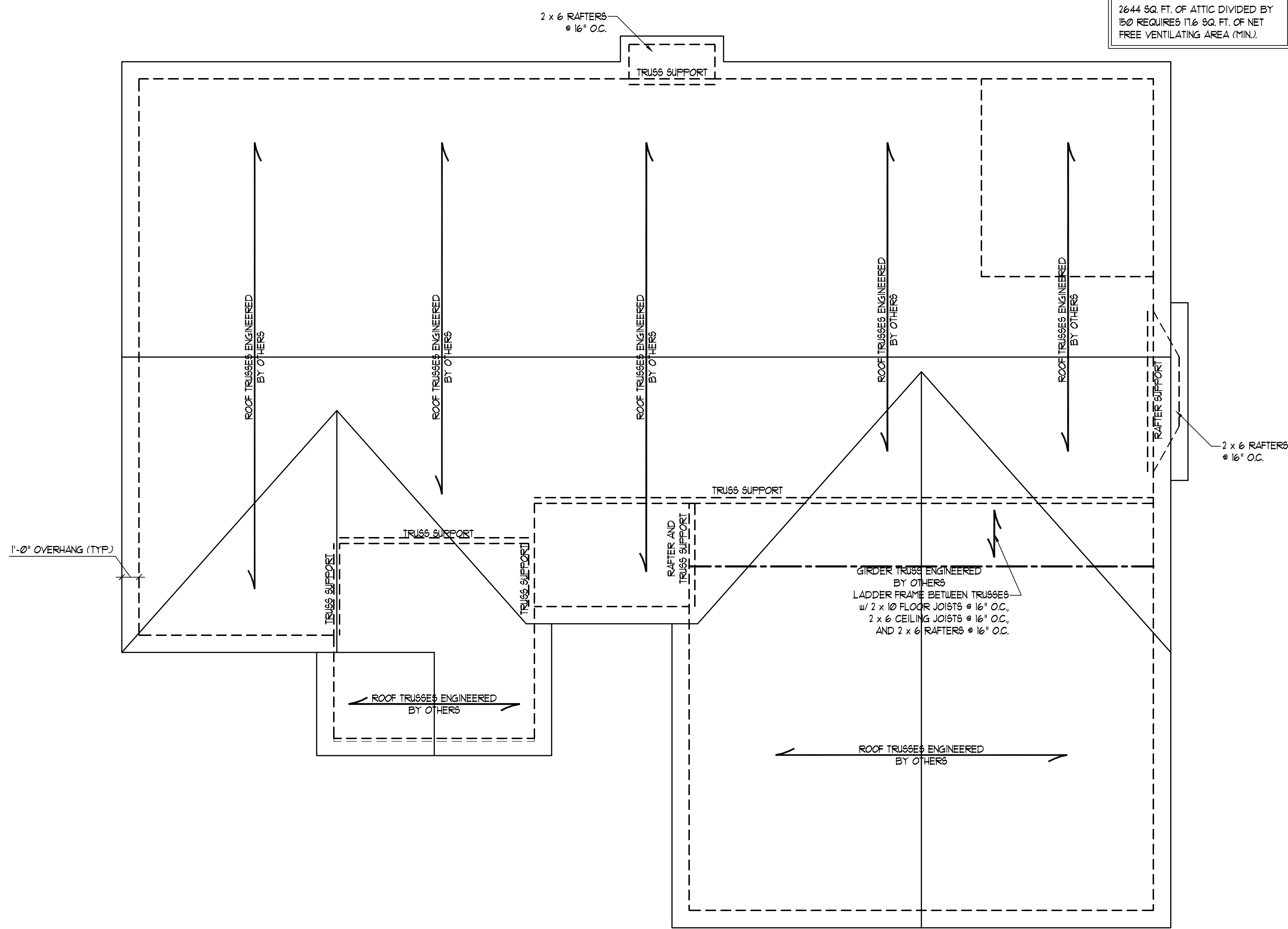
DATE: DECEMBER 7, 2007  
SCALE: 1/4"=1'-0"  
DRAWN BY: CM  
ENGINEERED BY: TSZ / DK

SHEET 6 OF 7  
ATTIC FRAMING PLAN

*Scott Thompson*  
NORTH CAROLINA PROFESSIONAL ENGINEER  
SEAL  
23449  
SCOTT THOMPSON  
12/21/07

- STRUCTURAL NOTES:**
- 1) ALL FRAMING LUMBER TO BE #2 SPF (UNO).
  - 2) ALL LOAD BEARING HEADERS TO BE (2) 2 x 10 (UNO).
  - 3) ALL BEAMS ARE TO BE SUPPORTED WITH (2) 2 x 4 PER END (UNO).

ATTIC VENT CALCULATION:  
2644 SQ. FT. OF ATTIC DIVIDED BY  
150 REQUIRES 176 SQ. FT. OF NET  
FREE VENTILATING AREA (MIN.)

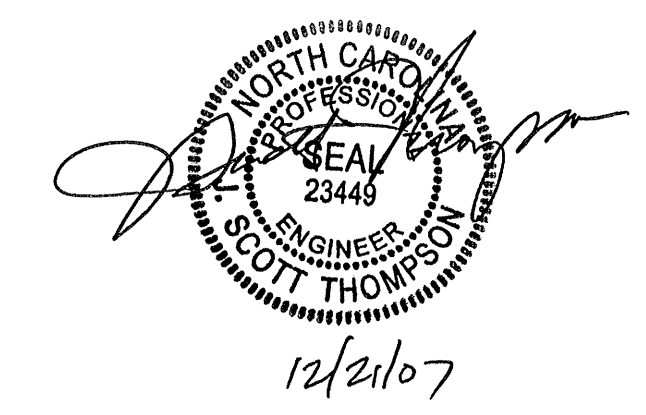


**J.S. THOMPSON**  
**ENGINEERING, INC**  
1033 WADE AVE., SUITE 104 RALEIGH, NC 27605  
PHONE: (919) 789-9919 FAX: (919) 789-9921

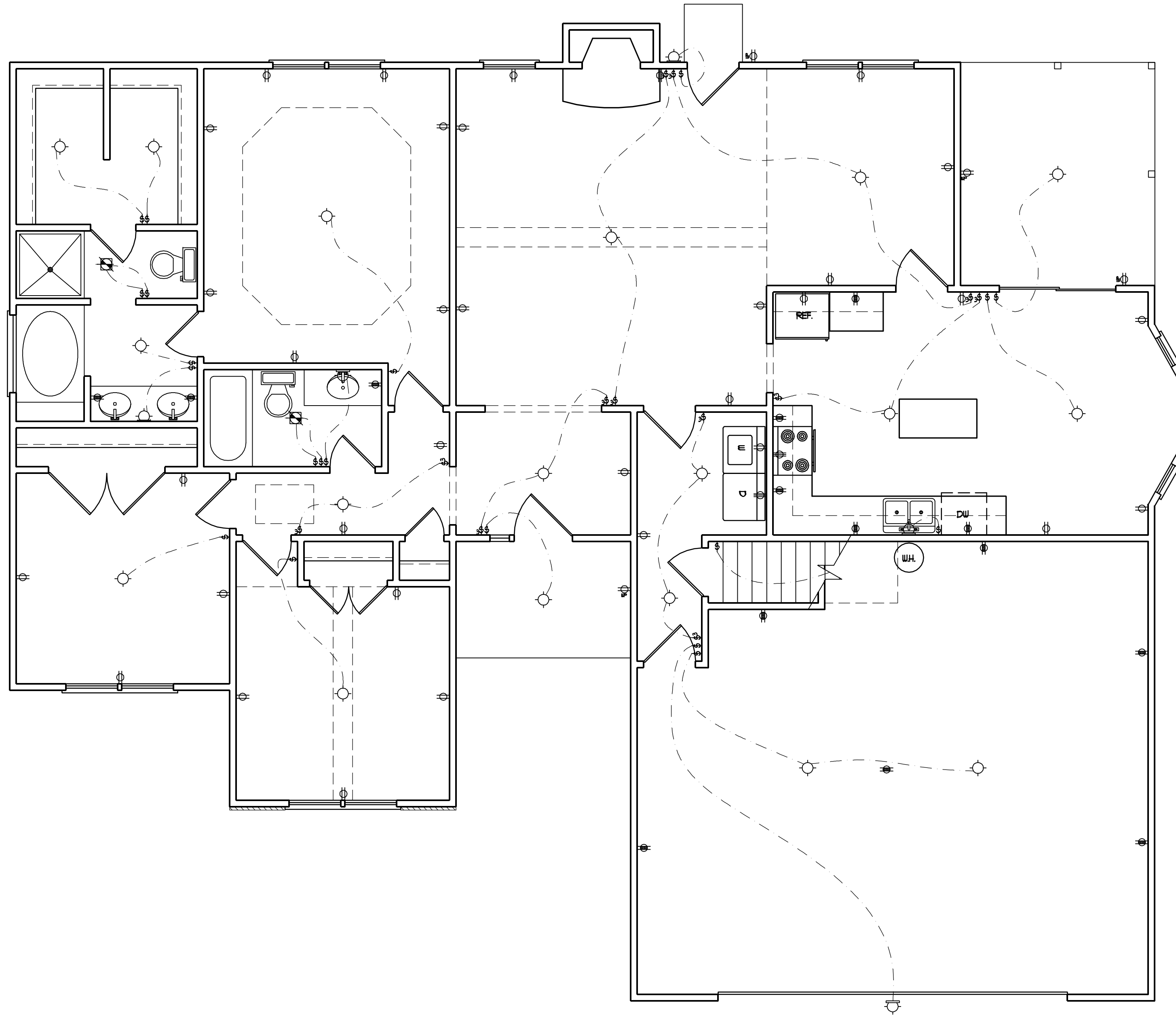
CL 1954  
CAVINNESS LAND

DATE: DECEMBER 7, 2007  
SCALE: 1/4"=1'-0"  
DRAWN BY: CM  
ENGINEERED BY: TSZ, DK

SHEET 7 OF 7  
ROOF PLAN



STRUCTURAL NOTES:  
1) ALL FRAMING LUMBER TO BE #2 SFF (UNO).  
2) STICK FRAME OVER-FRAMED ROOF SECTIONS W/ 2 x 8 RIDGES, 2 x 6 RAFTERS @ 16" O.C. AND FLAT 2 x 10 VALLEYS.



ELECTRICAL LEGEND

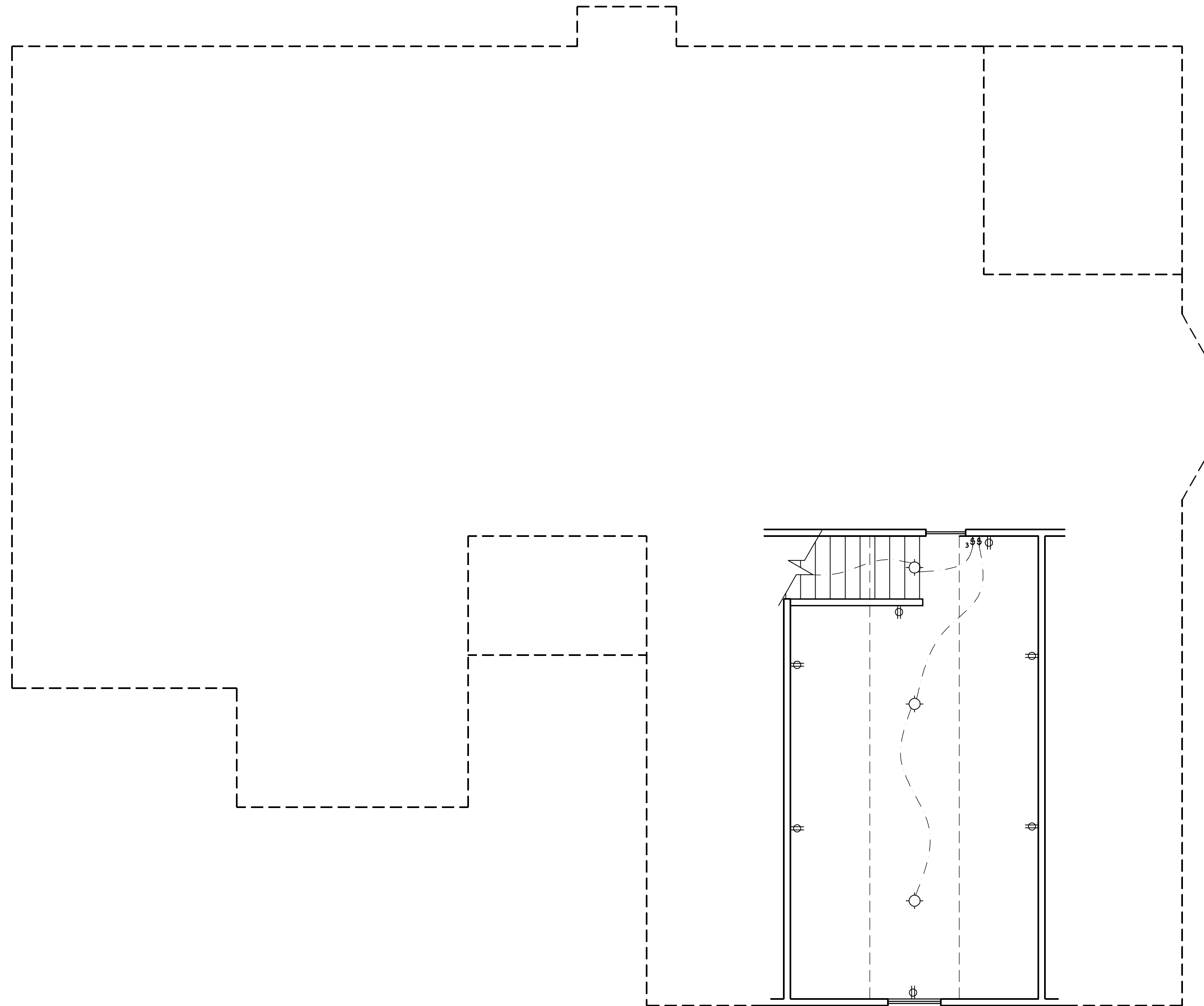
- ⊕ 110 V OUTLET
- ⊕ 110 V GFI OUTLET
- ⊕ 110 V SWITCHED OUTLET
- ⊕ 4-FLEX
- ⊕ COUNTER OR FLOOR MOUNTED
- ⊕ COUNTER OR FLOOR MOUNTED
- ⊕ WEATHERPROOF
- ⊕ 220 V OUTLET
- ⊕ 110 V DIRECT WIRE
- ⊕ 220 V DIRECT WIRE
- ⊕ SPECIAL PURPOSE (240 V, ETC.)
- ⊕ WALL MOUNT LIGHT
- ⊕ CEILING MOUNT LIGHT
- ⊕ PENDANT LIGHT
- ⊕ RECESSED CAN LIGHT
- ⊕ MINI CAN LIGHT
- ⊕ RECESSED SPOT LIGHT
- ⊕ FLUORESCENT LIGHT
- ⊕ UNDERCABINET LIGHT
- ⊕ SWITCH
- ⊕ 3-WAY SWITCH
- ⊕ 4-WAY SWITCH
- ⊕ DIMMER SWITCH
- ⊕ TIMER SWITCH
- ⊕ TELEPHONE
- ⊕ NATURAL GAS
- ⊕ CABLE CONNECTION
- ⊕ RECESSED CEILING SPEAKER
- ⊕ VACUUM OUTLET
- ⊕ DOORBELL CHIME
- ⊕ THERMOSTAT
- ⊕ EXHAUST FAN
- ⊕ 24 HOUR TIMER
- ⊕ 110 V SMOKE DETECTOR
- ⊕ CEILING FAN
- ⊕ CEILING FAN W/ LIGHT

**J.S. THOMPSON  
ENGINEERING, INC**  
1033 WADE AVE., SUITE 104 RALEIGH, NC 27605  
PHONE: (919) 789-9919 FAX: (919) 789-9921

**CL 1954  
CAVINNESS LAND**

DATE: DECEMBER 7, 2007  
SCALE: 1/4"=1'-0"  
DRAWN BY: CM  
ENGINEERED BY: TSZ /DK

SHEET: E-1  
FIRST FLOOR ELECTRICAL



ELECTRICAL LEGEND

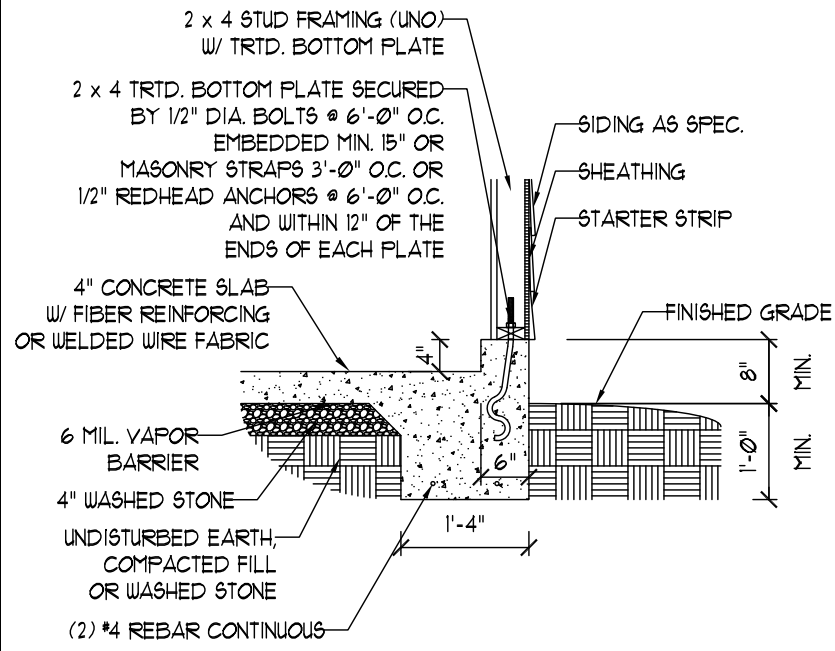
- 110 V OUTLET
- 110 V GFI OUTLET
- 110 V SWITCHED OUTLET
- 4-FLEX
- COUNTER OR FLOOR MOUNTED
- COUNTER OR FLOOR MOUNTED
- WEATHERPROOF
- 220 V OUTLET
- 110 V DIRECT WIRE
- 220 V DIRECT WIRE
- SPECIAL PURPOSE (240 V, ETC.)
- WALL MOUNT LIGHT
- CEILING MOUNT LIGHT
- PENDANT LIGHT
- RECESSED CAN LIGHT
- MINI CAN LIGHT
- RECESSED SPOT LIGHT
- FLUORESCENT LIGHT
- UNDERCABINET LIGHT
- SWITCH
- 3-WAY SWITCH
- 4-WAY SWITCH
- DIMMER SWITCH
- TIMER SWITCH
- TELEPHONE
- NATURAL GAS
- CABLE CONNECTION
- RECESSED CEILING SPEAKER
- VACUUM OUTLET
- DOORBELL CHIME
- THERMOSTAT
- EXHAUST FAN
- 24 HOUR TIMER
- 110 V SMOKE DETECTOR
- CEILING FAN
- CEILING FAN W/ LIGHT

**J.S. THOMPSON**  
**ENGINEERING, INC**  
 1033 WADE AVE., SUITE 104 RALEIGH, NC 27605  
 PHONE: (919) 789-9919 FAX: (919) 789-9921

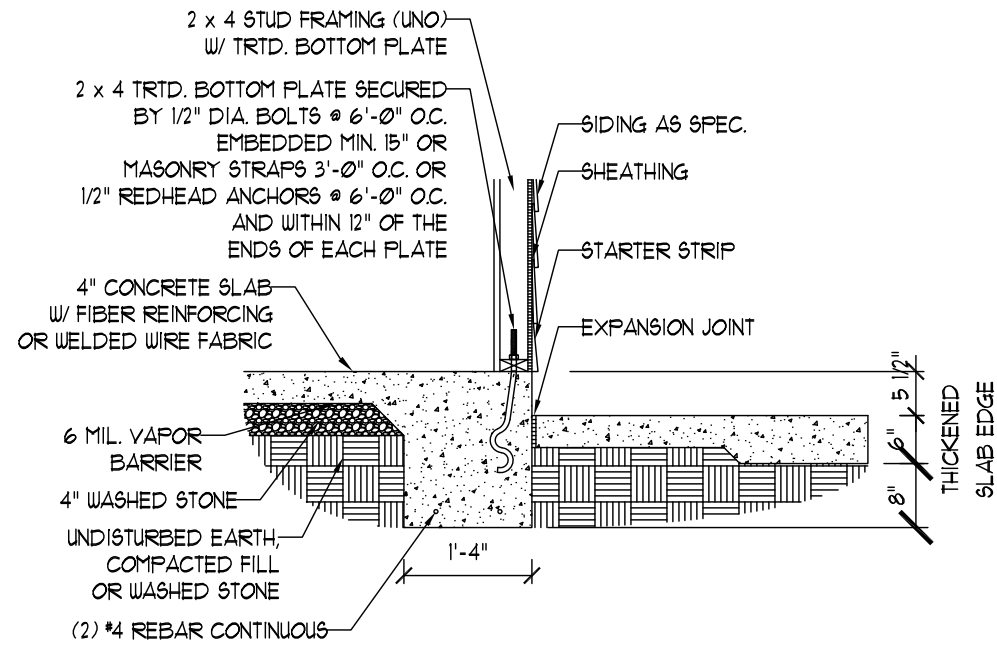
CL 1954  
 CAVINESS LAND

DATE: DECEMBER 7, 2007  
 SCALE: 1/4"=1'-0"  
 DRAWN BY: CM  
 ENGINEERED BY: TSZ./DK

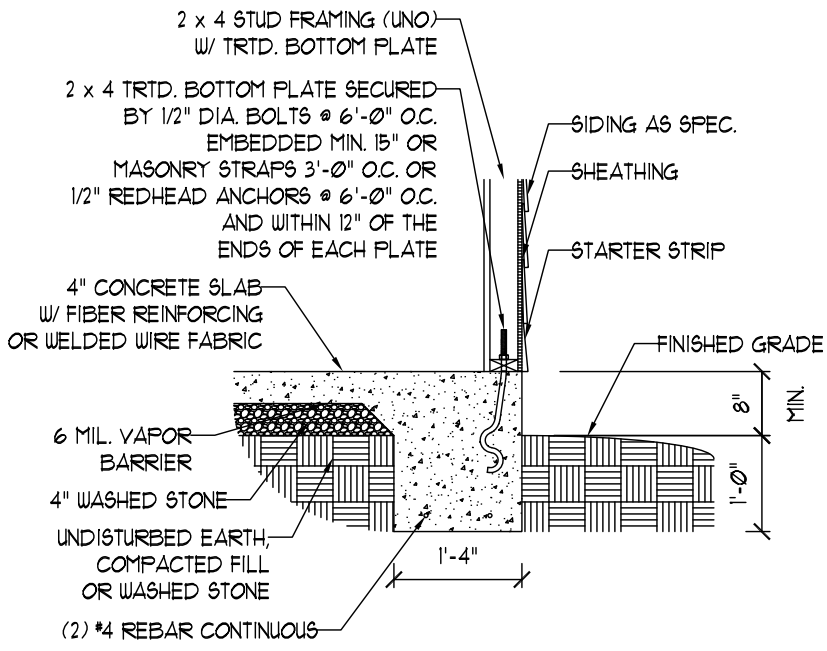
SHEET: E-2  
 SECOND  
 FLOOR ELECTRICAL



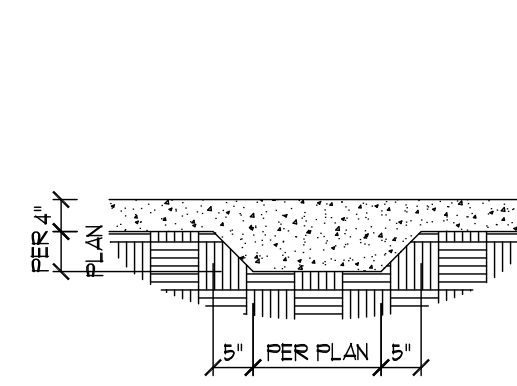
GARAGE CURB DETAIL



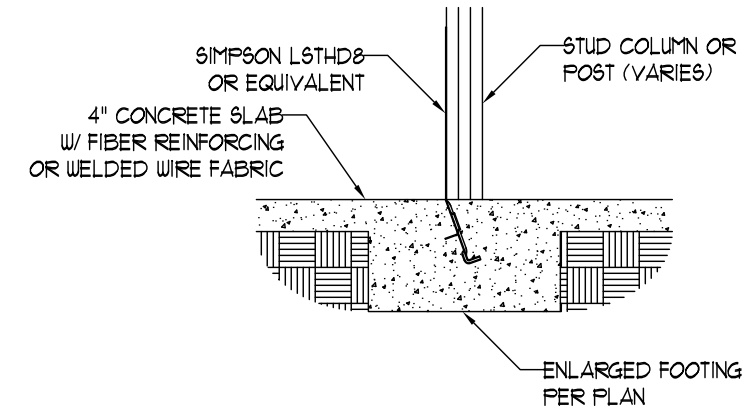
PORCH SLAB DETAIL



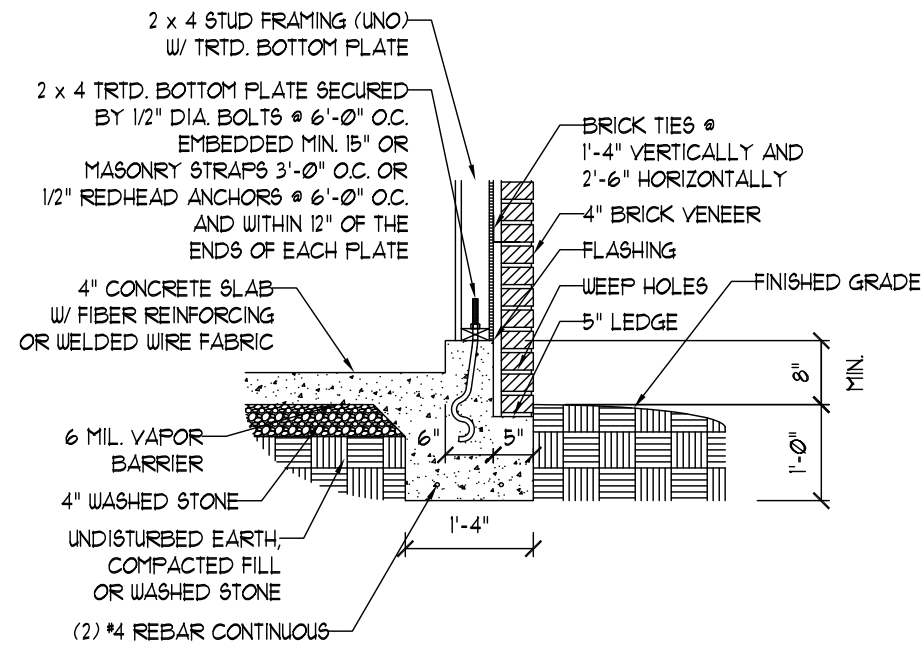
TYPICAL SLAB DETAIL



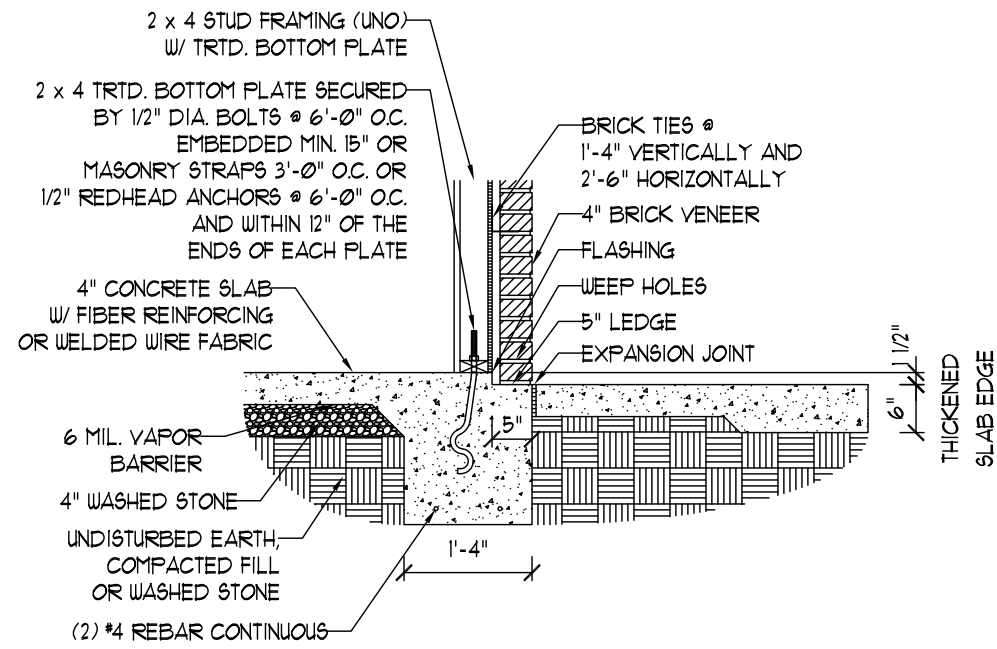
THICKENED SLAB DETAIL



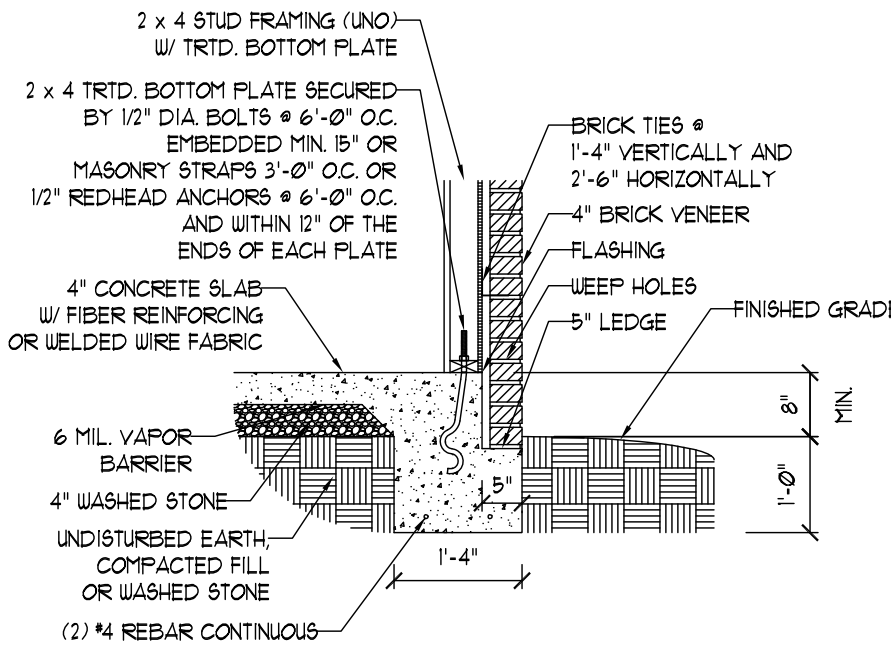
TYPICAL COLUMN CONNECTION DETAIL



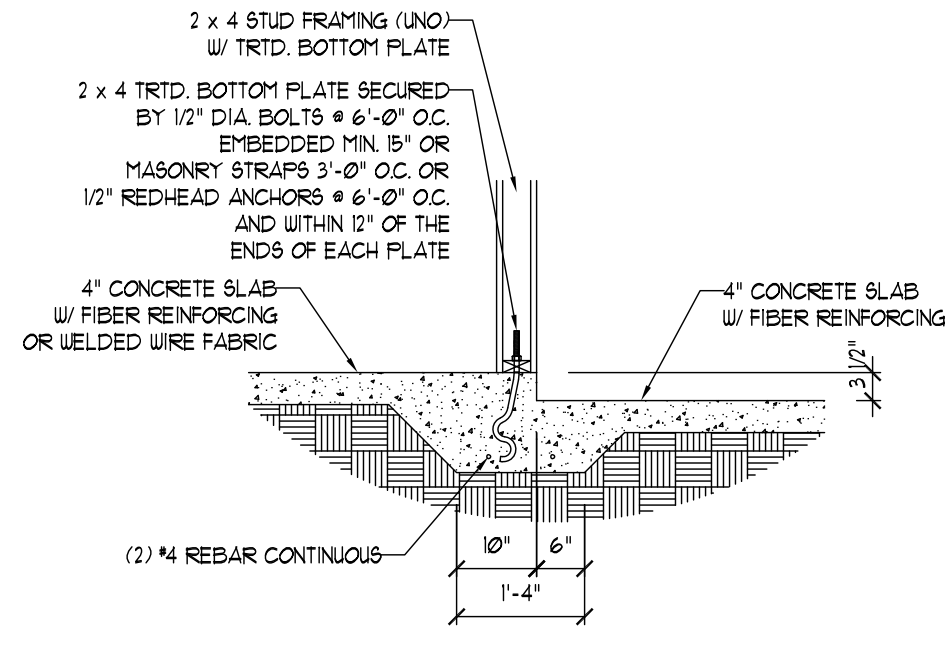
GARAGE CURB BRICK LEDGE DETAIL



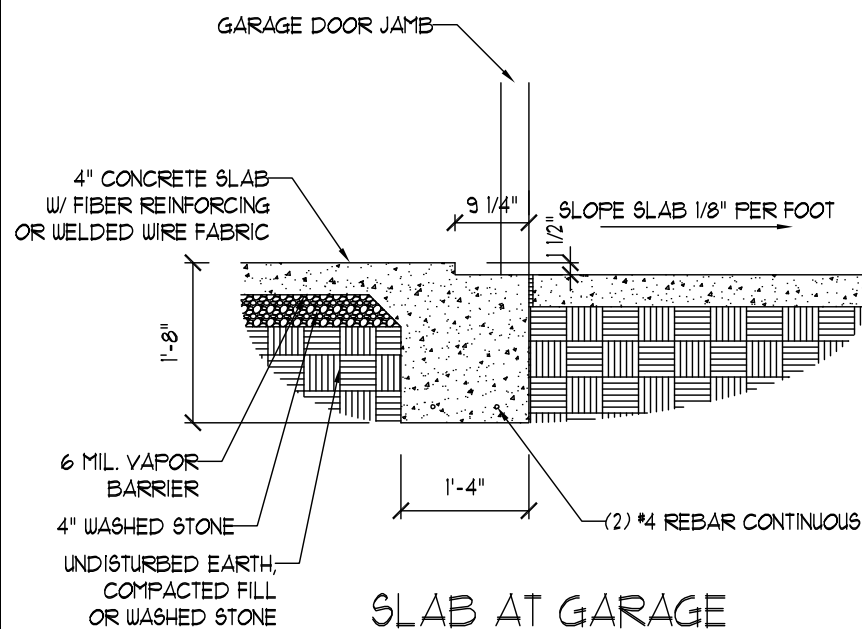
PORCH SLAB W/ BRICK DETAIL



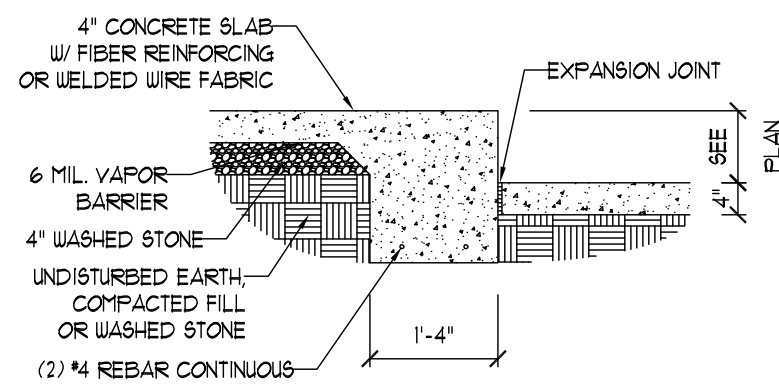
BRICK LEDGE DETAIL



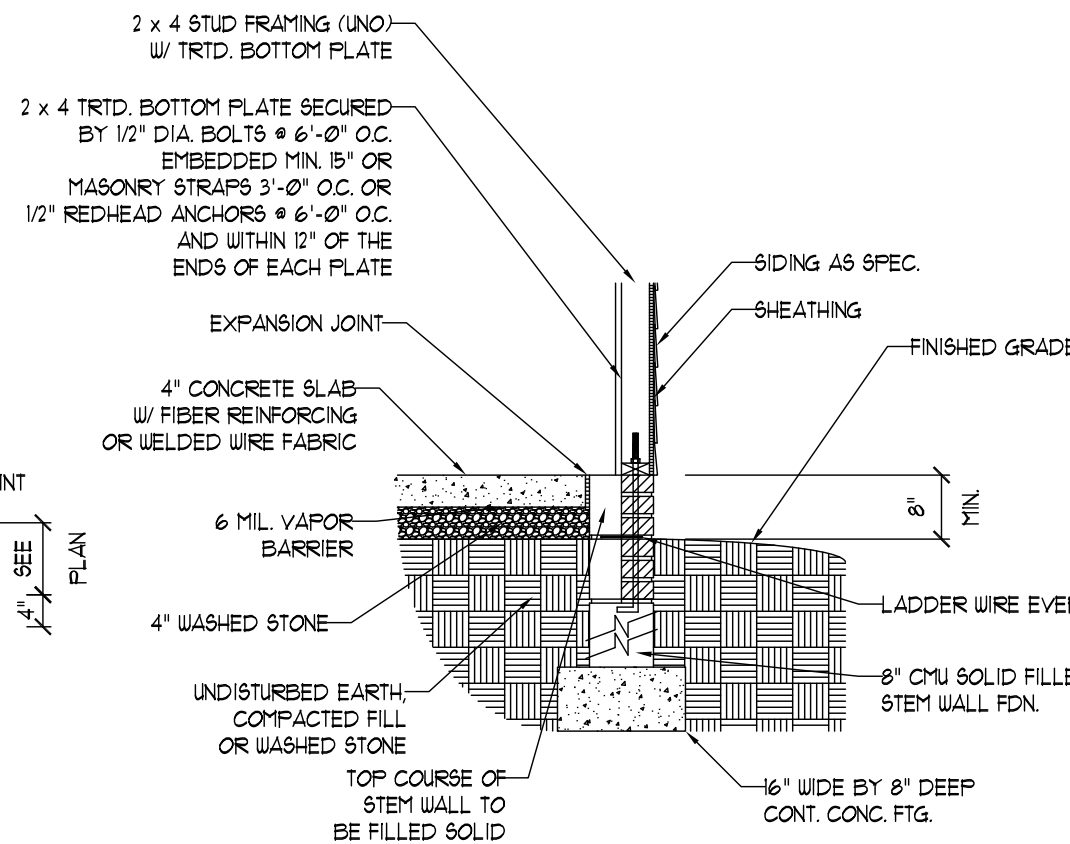
STEP IN GARAGE DETAIL



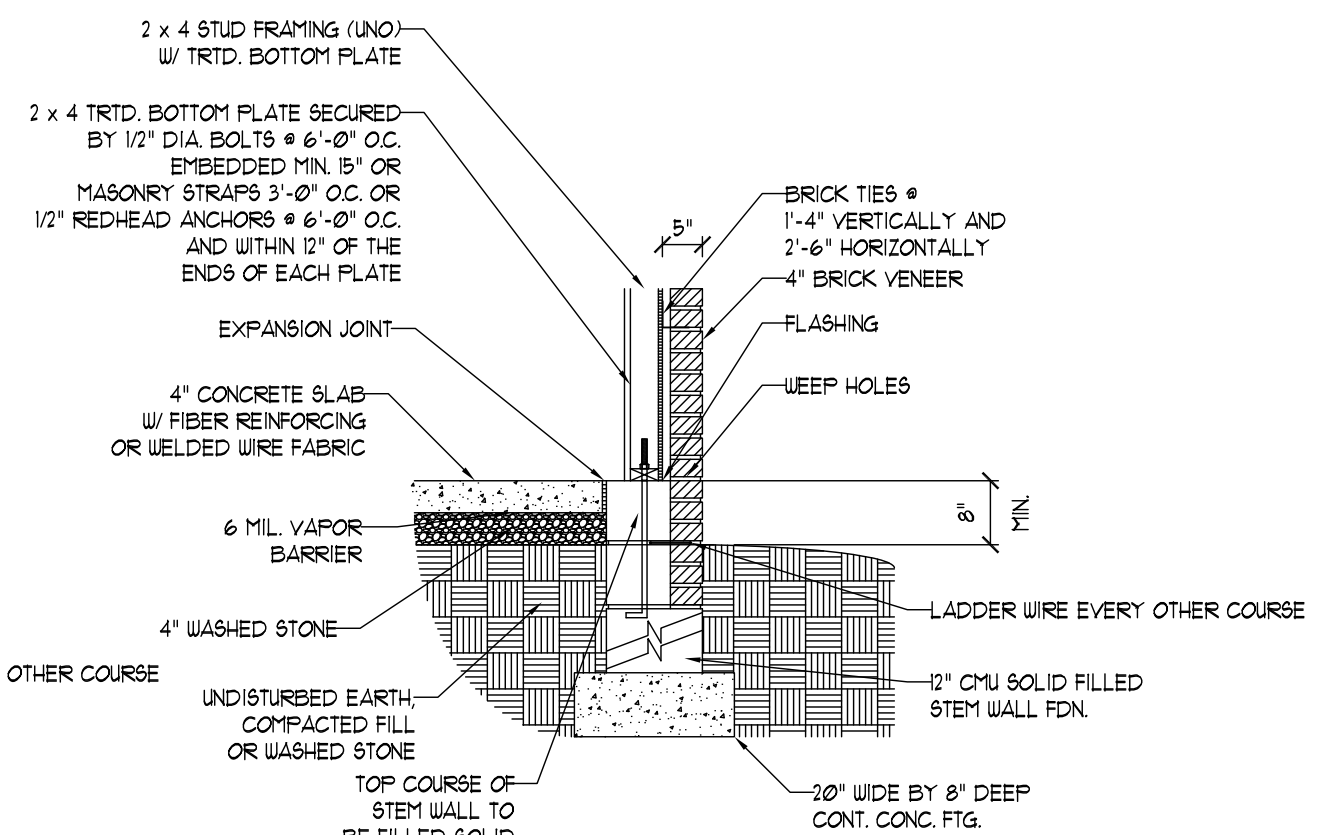
SLAB AT GARAGE DOOR DETAIL



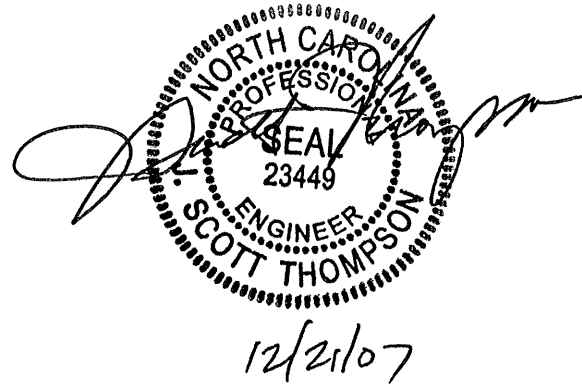
SLAB FLOOR CHANGE DETAIL



STEM WALL FDN. DETAIL



STEM WALL FDN. W/ BRICK DETAIL



**J.S. THOMPSON**  
**ENGINEERING, INC.**  
 1033 WADE AVE., SUITE 104 RALEIGH, NC 27605  
 PHONE: (919) 789-9919 FAX: (919) 789-9921

**MONOLITHIC**  
**SLAB DETAILS**

DATE: DECEMBER 19, 2007  
 SCALE: 1/4"=1'-0"  
 DRAWN BY: TSZ  
 ENGINEERED BY: TSZ

SHEET: DETAILS