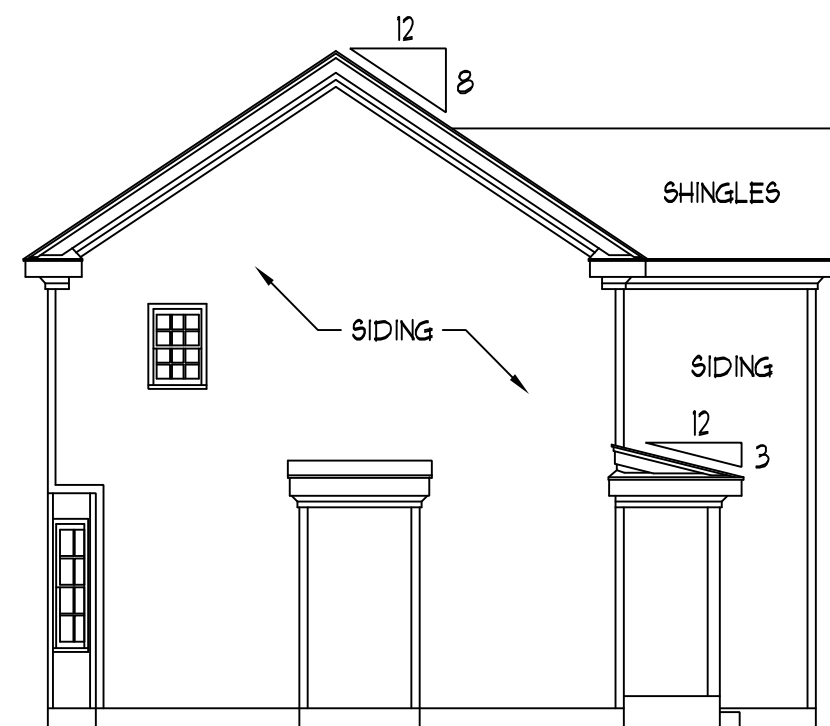


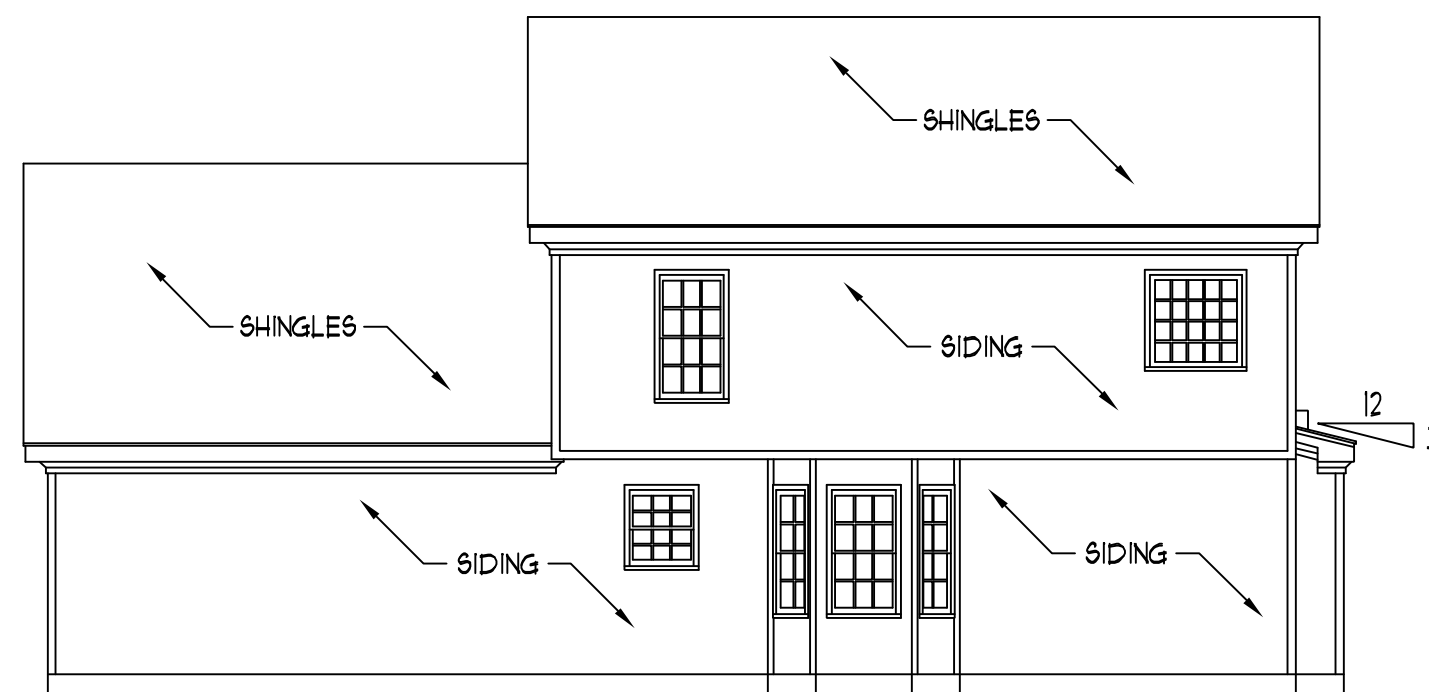
FRONT ELEVATION

SCALE: 1/4" = 1'-0"

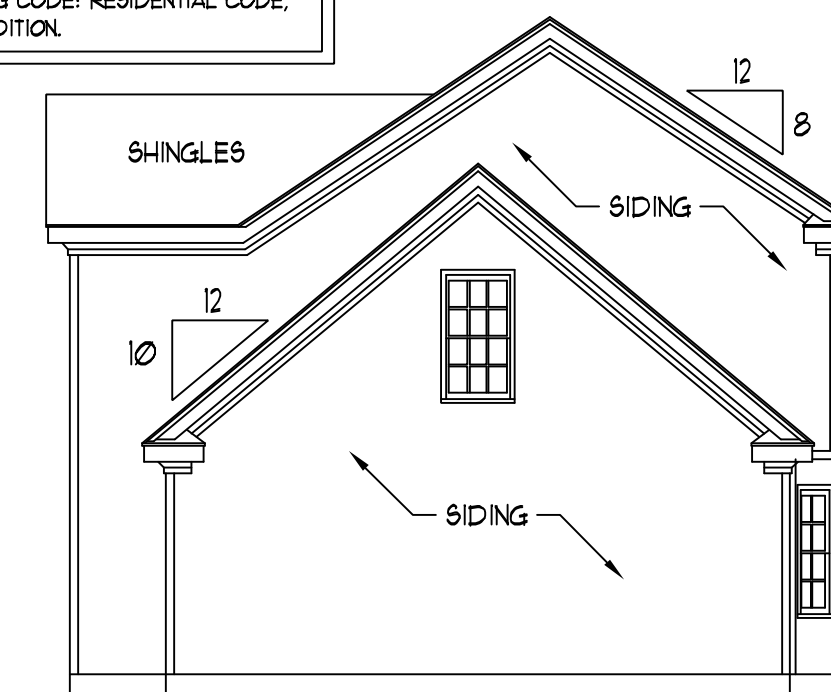
- NOTES:
- 1) STRUCTURAL DESIGN PER NORTH CAROLINA STATE BUILDING CODE: RESIDENTIAL CODE, 2006 EDITION.
  - 2) INSTALL 1/2" ANCHOR BOLTS 6'-0" O.C. AND WITHIN 1'-0" FROM END OF EACH PLATE.
  - 3) MEAN ROOF HEIGHT IS LESS THAN 30 FEET.
  - 4) EXTERIOR WALLS DESIGNED FOR 100 MPH WINDS.
  - 5) WALL CLADDING DESIGNED FOR 24.1 PSF (POSITIVE AND NEGATIVE).
  - 6) ROOF CLADDING DESIGNED FOR 21.0 PSF (POSITIVE AND NEGATIVE) FOR ROOF PITCHES 7/12 TO 12/12 AND 34.8 PSF (POSITIVE AND NEGATIVE) FOR ROOF PITCHES 225/12 TO 1/12.
  - 7) WALLS TO BE BRACED IN ACCORDANCE WITH SECTION R602.10 OF THE NORTH CAROLINA STATE BUILDING CODE: RESIDENTIAL CODE, 2006 EDITION.



LEFT ELEVATION  
SCALE: 1/8" = 1'-0"



REAR ELEVATION  
SCALE: 1/8" = 1'-0"



RIGHT ELEVATION  
SCALE: 1/8" = 1'-0"

**J.S. THOMPSON  
ENGINEERING, INC**  
1033 WADE AVE., SUITE 104 RALEIGH, NC 27605  
PHONE: (919) 789-9919 FAX: (919) 789-9921

CL 1934  
CAVINESS & CATES

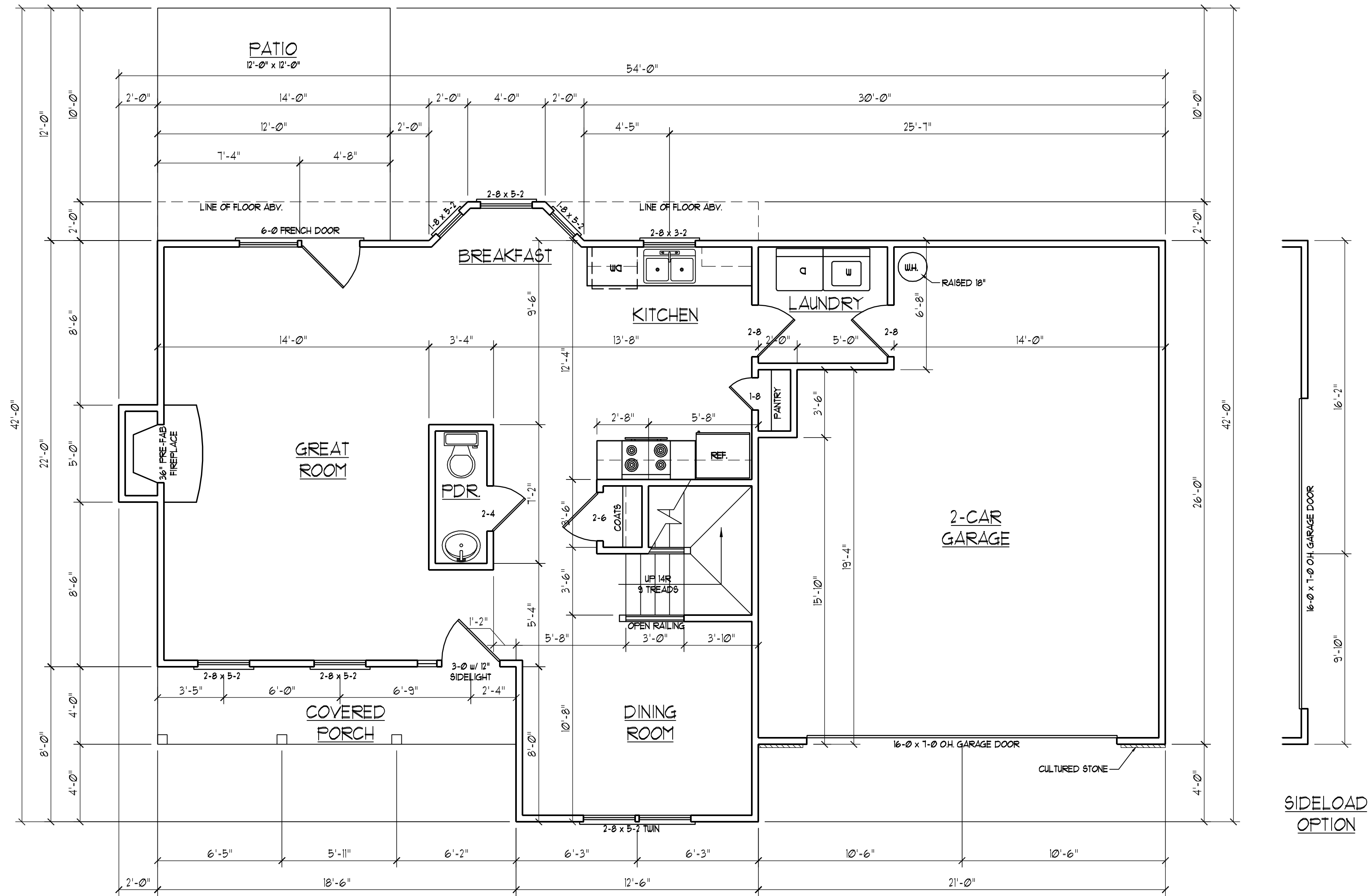
DATE: DECEMBER 19, 2007  
SCALE: AS NOTED  
DRAWN BY: CM  
ENGINEERED BY: TJS

SHEET 1 OF 7  
ELEVATIONS

| SQUARE FOOTAGE |              |
|----------------|--------------|
| 1st FLOOR:     | 858 SQ. FT.  |
| 2nd FLOOR:     | 1076 SQ. FT. |
| TOTAL:         | 1934 SQ. FT. |
| FRONT PORCH:   | 74 SQ. FT.   |
| REAR PORCH:    | 144 SQ. FT.  |
| GARAGE:        | 492 SQ. FT.  |

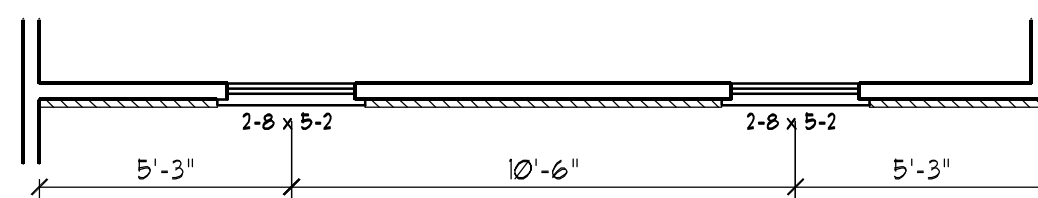
**J.S. THOMPSON  
ENGINEERING, INC.**  
1033 WADE AVE., SUITE 104 RALEIGH, NC 27605  
PHONE: (919) 7899919 FAX: (919) 7899921

CL 1934  
CAVINNESS & CATES



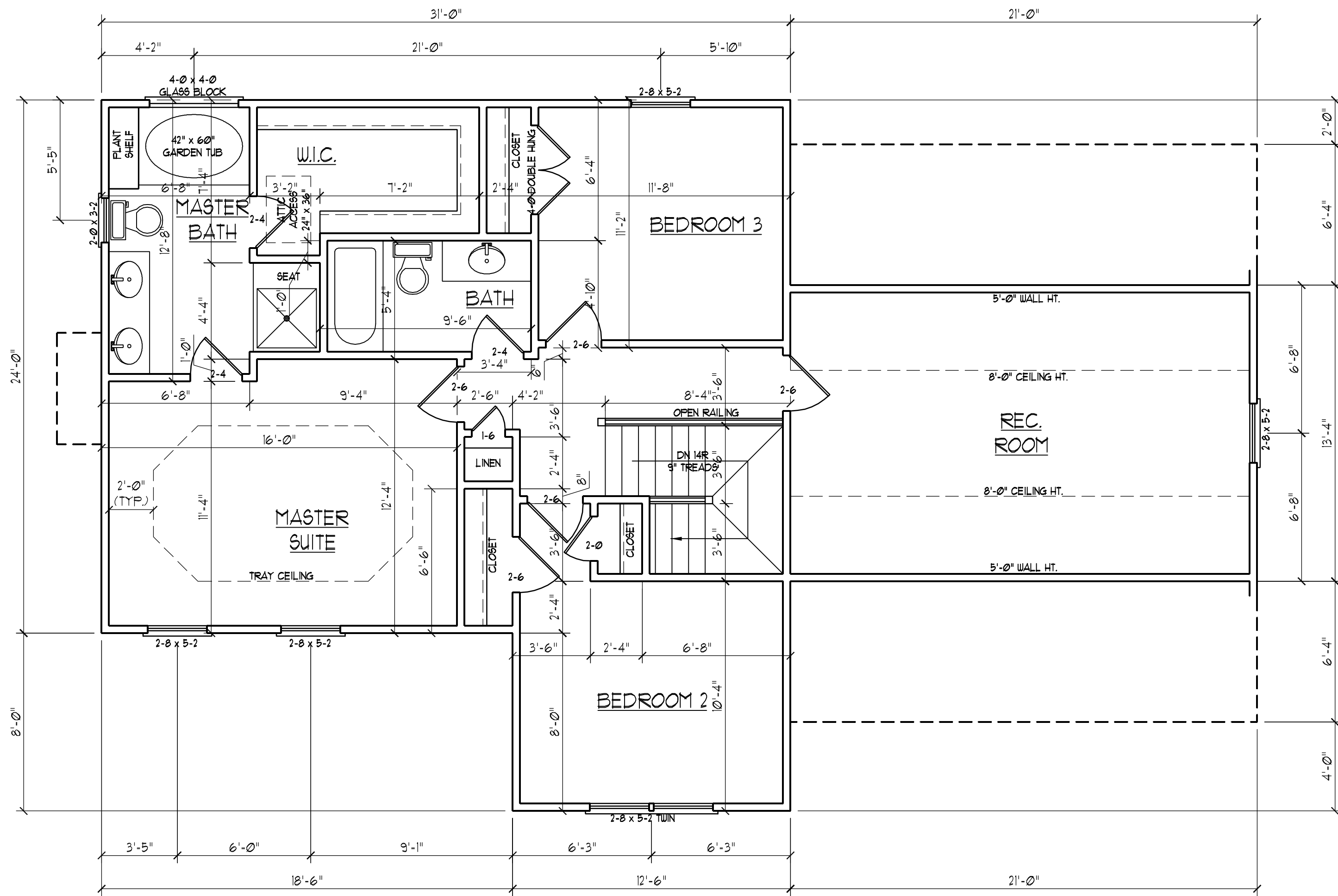
**GENERAL NOTES**

- 1) ALL WORK SHALL BE PERFORMED IN ACCORDANCE WITH ALL APPLICABLE NATIONAL, STATE, AND LOCAL CODES AND REGULATIONS.
- 2) CONTRACTOR SHALL VERIFY ALL CONDITIONS AND DIMENSIONS AT SITE BEFORE BEGINNING CONSTRUCTION. ANY DISCREPANCIES SHALL BE REPORTED TO J.S. THOMPSON ENGINEERING, INC. FOR JUSTIFICATION AND/OR CORRECTION BEFORE PROCEEDING WITH WORK. CONTRACTORS SHALL ASSUME RESPONSIBILITY FOR ERRORS THAT ARE NOT REPORTED PRIOR TO CONSTRUCTION.
- 3) ALL DIMENSIONS SHOULD BE READ OR CALCULATED AND NEVER SCALED.
- 4) CONTRACTOR SHALL INSURE COMPATIBILITY OF THE BUILDING WITH ALL SITE REQUIREMENTS.



|                         |
|-------------------------|
| DATE: DECEMBER 19, 2007 |
| SCALE: 1/4"=1'-0"       |
| DRAWN BY: CM            |
| ENGINEERED BY: TSZ      |

SHEET 2 OF 7  
FIRST FLOOR PLAN



**J.S. THOMPSON  
ENGINEERING, INC**  
1033 WADE AVE., SUITE 104 RALEIGH, NC 27605  
PHONE: (919) 789-9919 FAX: (919) 789-9921

CL 1934  
CAVINNESS & CATES

DATE: DECEMBER 19, 2007  
SCALE: 1/4"=1'-0"  
DRAWN BY: CM  
ENGINEERED BY: TSZ

SHEET: 3 OF 7  
SECOND FLOOR PLAN

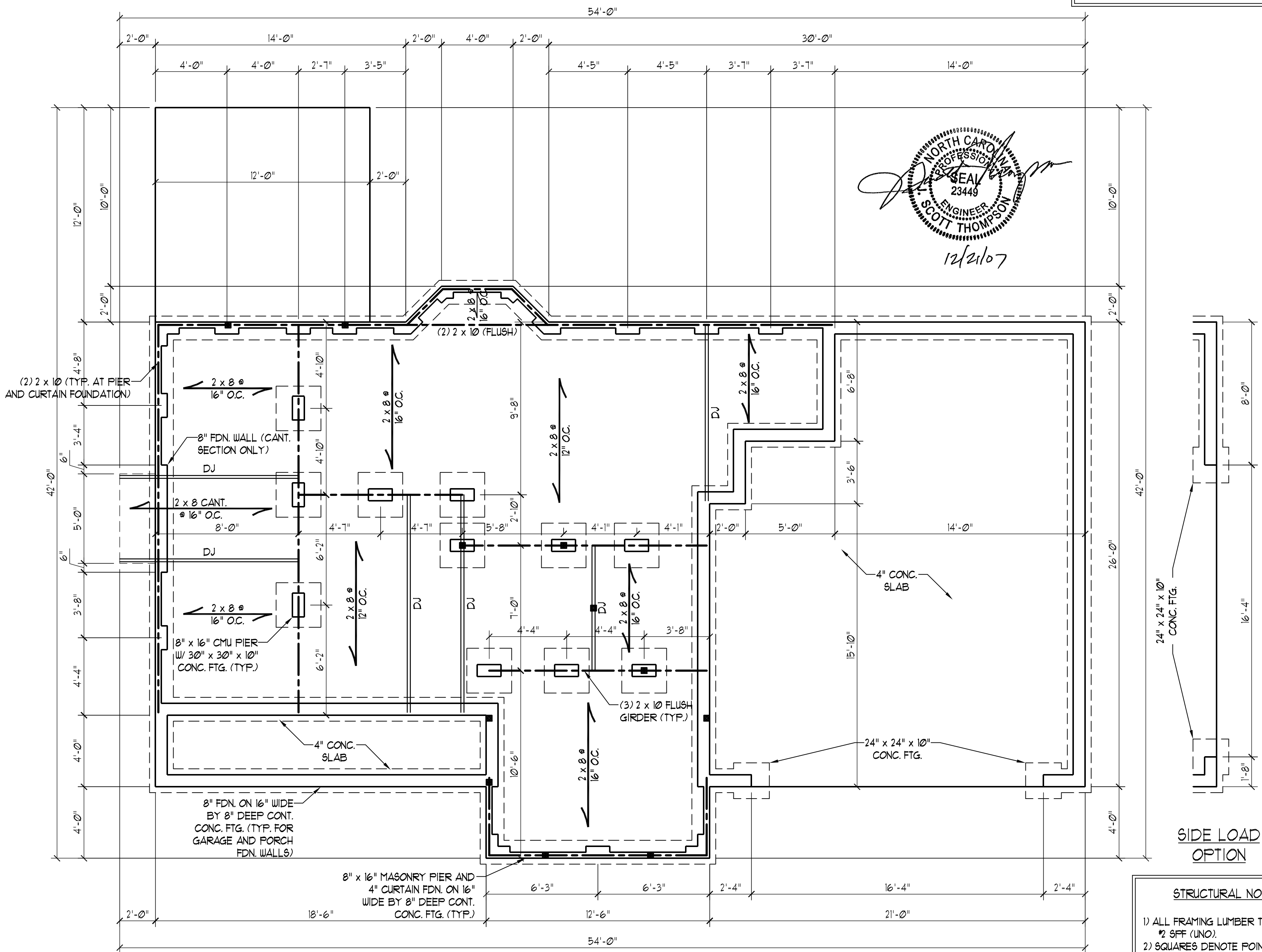
**FOUNDATION VENTILATION CALCULATION**  
 858 SQ. FT. OF CRAWL SPACE DIVIDED BY 1500 EQUALS 0.6 SQ. FT. OF NET FREE AREA REQUIRED. INSTALL 6 MIL POLY TO COVER ENTIRE CRAWL SPACE. LOCATE VENTS WITHIN 3'-0" OF EACH CORNER OF THE BUILDING TO PROVIDE CROSS-VENTILATION.

**J.S. THOMPSON**  
**ENGINEERING, INC**  
 1033 WADE AVE., SUITE 104 RALEIGH, NC 27605  
 PHONE: (919) 789-9919 FAX: (919) 789-9921

CL 1934  
 CAVINESS & CATES

DATE: DECEMBER 19, 2007  
 SCALE: 1/4"=1'-0"  
 DRAWN BY: CM  
 ENGINEERED BY: TSZ

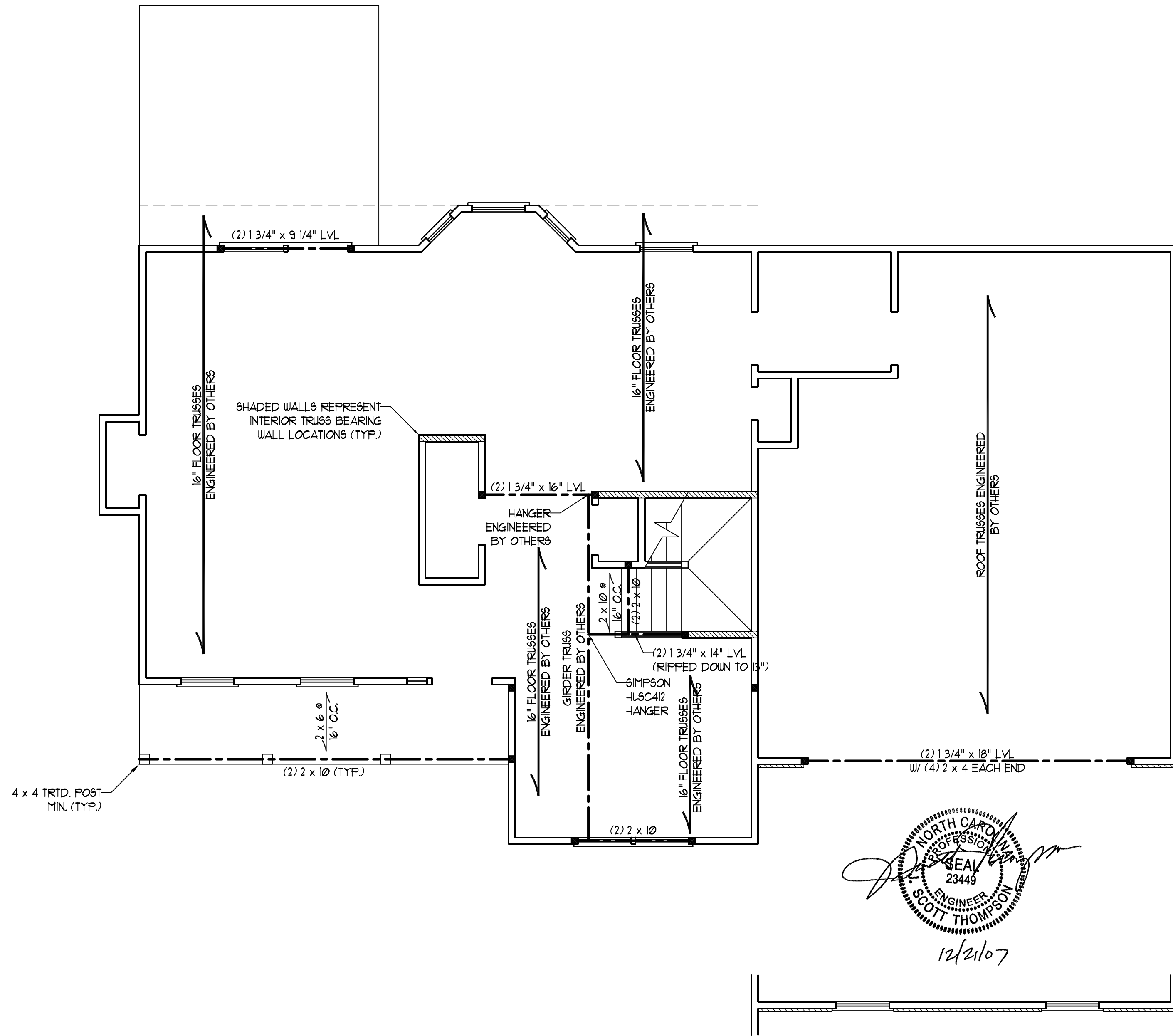
SHEET 4 OF 7  
 FOUNDATION PLAN



**STRUCTURAL NOTES:**

- 1) ALL FRAMING LUMBER TO BE #2 SFF (UNO).
- 2) SQUARES DENOTE POINT LOADS WHICH REQUIRE SOLID BLOCKING TO GIRDER OR FOUNDATION.
- 3) PIER AND CURTAIN FOUNDATION TO BE CONSTRUCTED PER SECTION R404.1.5 OF THE 2006 NCIBC. RC.
- 4) INSTALL 1/2" ANCHOR BOLTS 6'-0" O.C. AND WITHIN 1'-0" FROM END OF EACH PLATE.





12/21/07

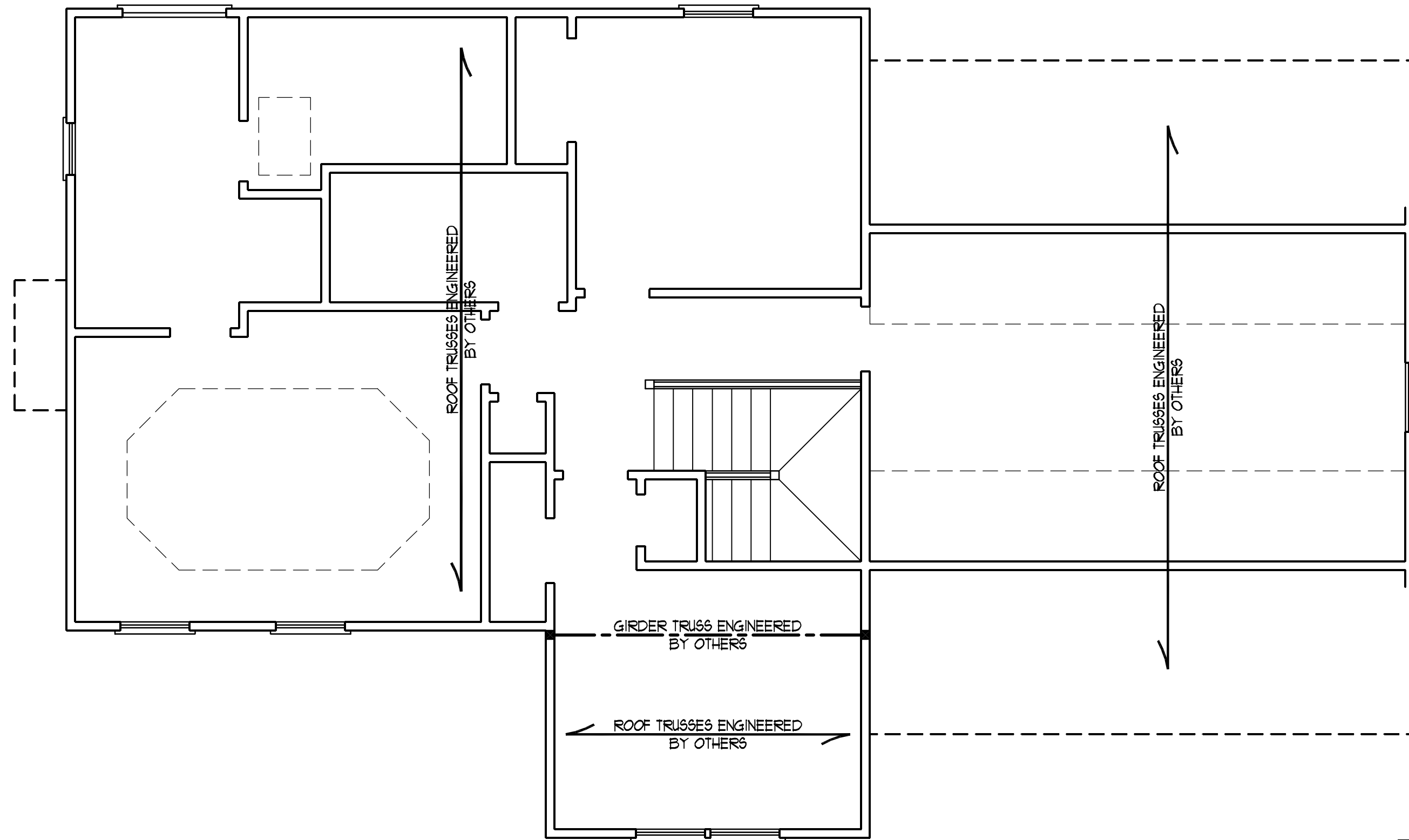
- STRUCTURAL NOTES:**
- 1) ALL FRAMING LUMBER TO BE #2 SFF (UNO).
  - 2) ALL LOAD BEARING HEADERS TO BE (2) 2 x 10 (UNO).
  - 3) SUPPORT WALLS PARALLEL TO FLOOR TRUSSES PER MANUFACTURER'S SPECS.
  - 4) ALL BEAMS ARE TO BE SUPPORTED WITH (2) 2 x 4 PER END (UNO).
  - 5) SQUARES DENOTE POINT LOADS WHICH REQUIRE SOLID BLOCKING TO GIRDER OR FOUNDATION.

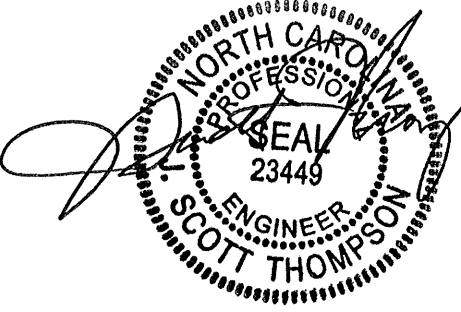
**J.S. THOMPSON**  
**ENGINEERING, INC**  
 1033 WADE AVE., SUITE 104 RALEIGH, NC 27605  
 PHONE: (919) 789-9919 FAX: (919) 789-9921

CL 1934  
 CAVINESS & CATES

DATE: DECEMBER 19, 2007  
 SCALE: 1/4"=1'-0"  
 DRAWN BY: CM  
 ENGINEERED BY: TSZ

SHEET 5 OF 7  
 SECOND FLOOR  
 FRAMING PLAN




  
 12/21/07

- STRUCTURAL NOTES:**
- 1) ALL FRAMING LUMBER TO BE #2 SPF (UNO).
  - 2) ALL LOAD BEARING HEADERS TO BE (2) 2 x 10 (UNO).
  - 3) ALL BEAMS ARE TO BE SUPPORTED WITH (2) 2 x 4 PER END (UNO).
  - 4) SQUARES DENOTE POINT LOADS WHICH REQUIRE SOLID BLOCKING TO GIRDER OR FOUNDATION.

**J.S. THOMPSON**  
**ENGINEERING, INC**  
 1033 WADE AVE., SUITE 104 RALEIGH, NC 27605  
 PHONE: (919) 789-9919 FAX: (919) 789-9921

CL 1934  
 CAVINESS & CATES

DATE: DECEMBER 19, 2007  
 SCALE: 1/4"=1'-0"  
 DRAWN BY: CM  
 ENGINEERED BY: TST

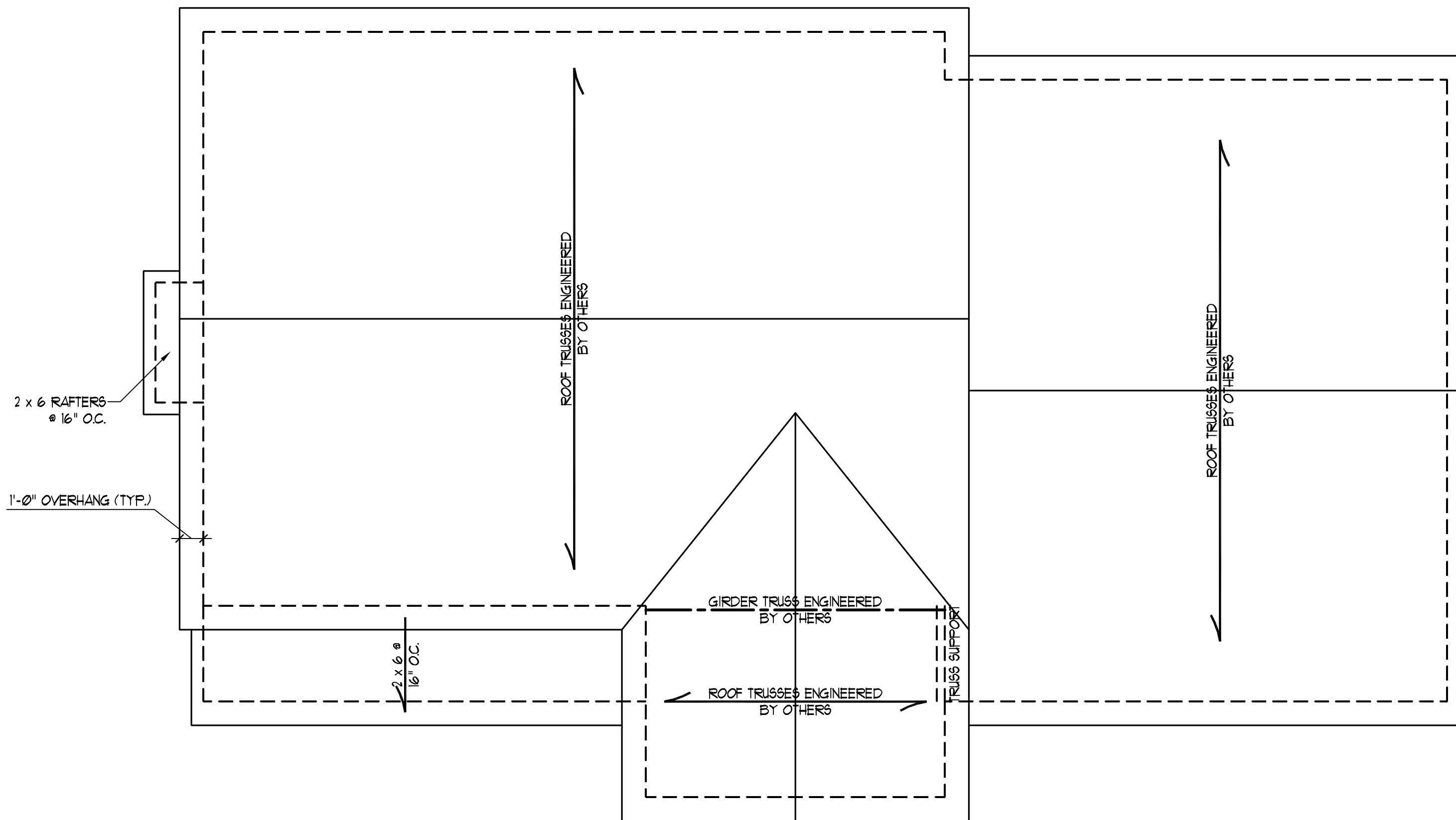
SHEET: 6 OF: 7  
 ATTIC FRAMING PLAN

ATTIC VENT CALCULATION:

1643 SQ. FT. OF ATTIC DIVIDED BY  
150 REQUIRES 110 SQ. FT. OF NET  
FREE VENTILATING AREA (MIN).

**J.S. THOMPSON**  
**ENGINEERING, INC**  
1033 WADE AVE., SUITE 104 RALEIGH, NC 27605  
PHONE: (919) 789-9919 FAX: (919) 789-9921

CL 1934  
CAVINNESS & CATES



Professional Engineer Seal for Scott Thompson, State of North Carolina, License No. 23449. The seal includes a signature and the date 12/21/07.

STRUCTURAL NOTES:

- 1) ALL FRAMING LUMBER TO BE #2 SPF (UNO).
- 2) STICK FRAME OVER-FRAMED ROOF SECTIONS W/ 2 x 8 RIDGES, 2 x 6 RAFTERS @ 16" O.C. AND FLAT 2 x 10 VALLEYS.

DATE: DECEMBER 19, 2007

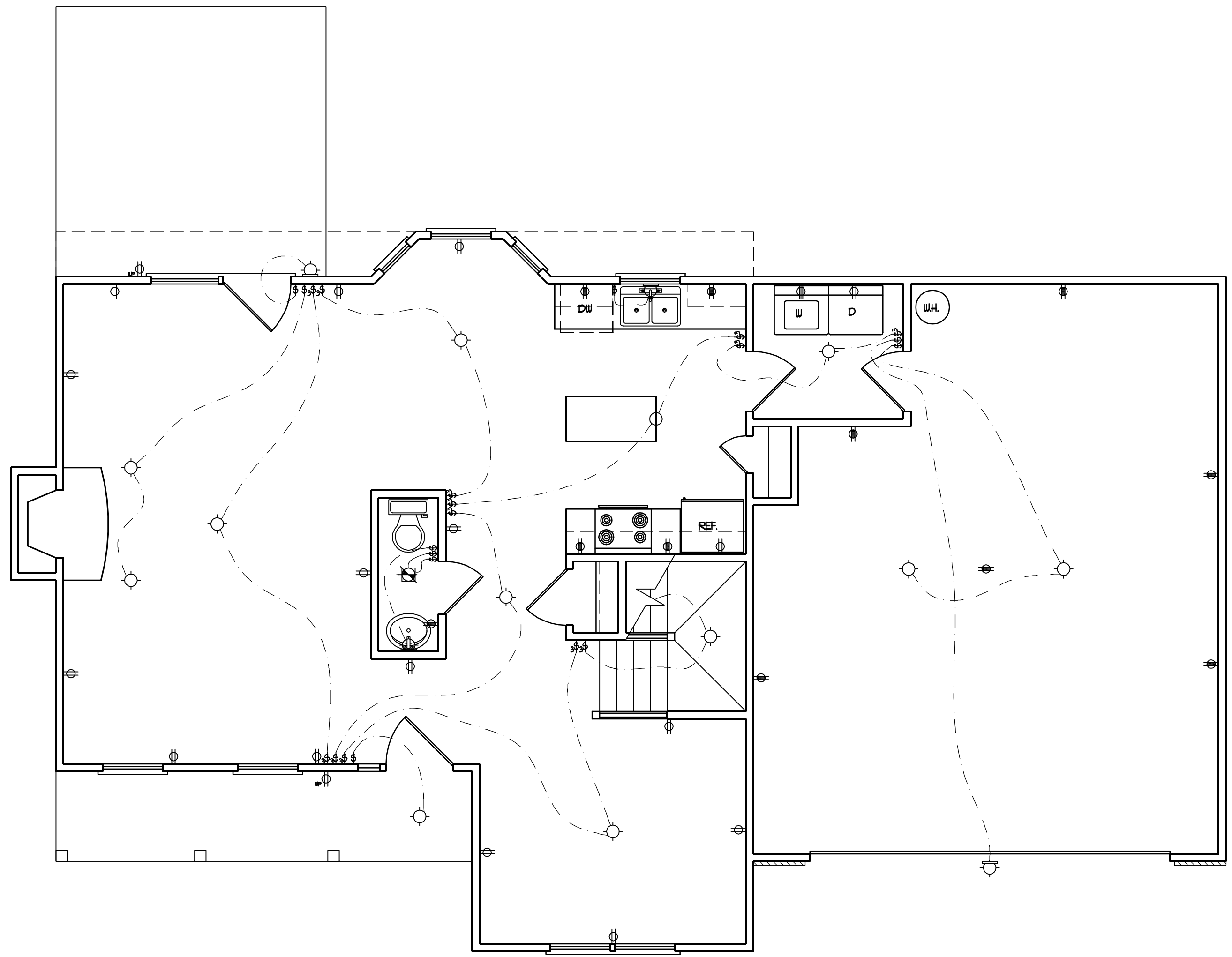
SCALE: 1/4"=1'-0"

DRAWN BY: CM

ENGINEERED BY: TST

SHEET 7 OF 7

ROOF PLAN



**ELECTRICAL LEGEND**

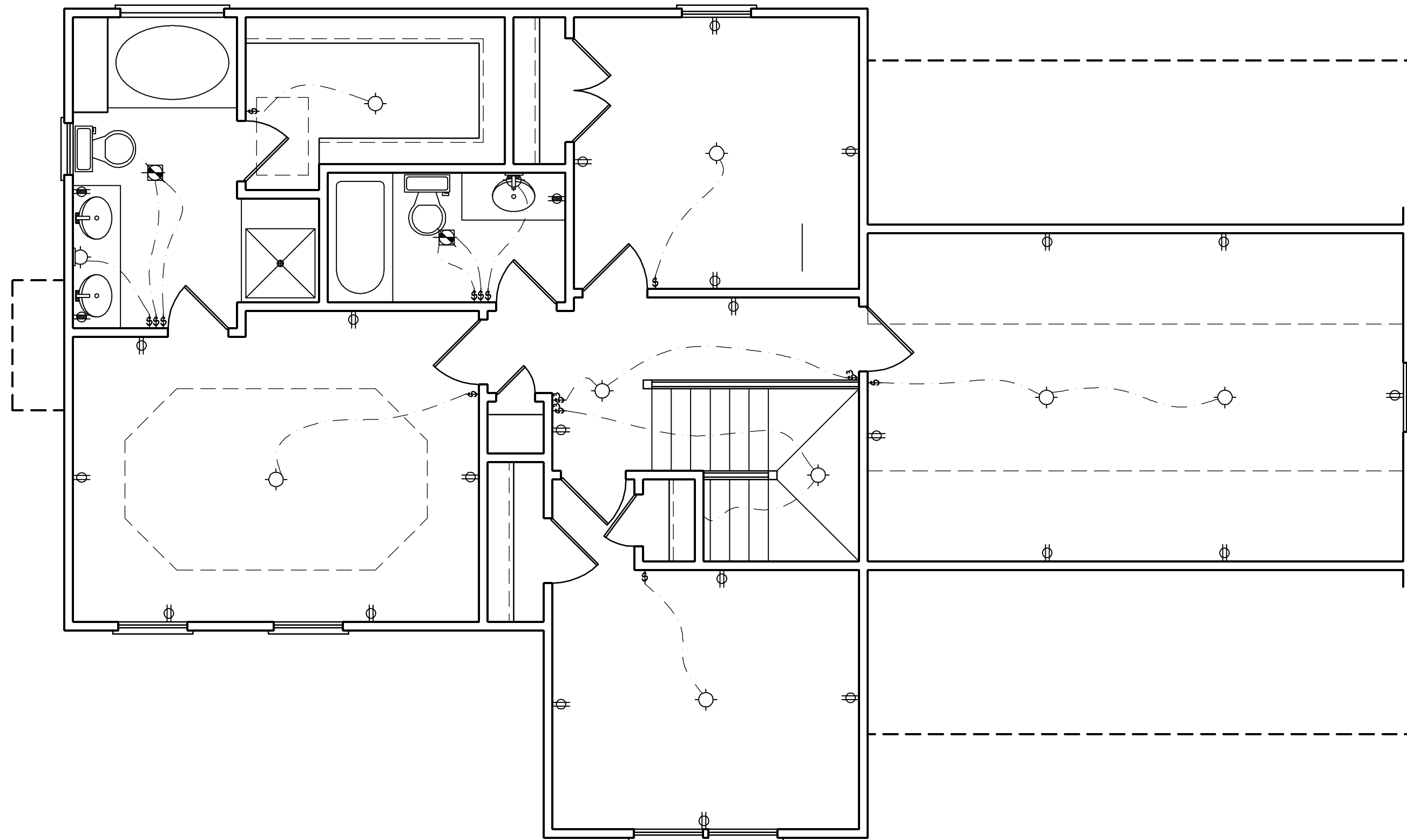
- ⊕ 110 V OUTLET
- ⊕ 110 V GFI OUTLET
- ⊕ 110 V SWITCHED OUTLET
- ⊕ 4-FLEX
- ⊕ COUNTER OR FLOOR MOUNTED
- ⊕ COUNTER OR FLOOR MOUNTED
- ⊕ WEATHERPROOF
- ⊕ 220 V OUTLET
- ⊕ 110 V DIRECT WIRE
- ⊕ 220 V DIRECT WIRE
- ⊕ SPECIAL PURPOSE (240 V, ETC.)
- ⊕ WALL MOUNT LIGHT
- ⊕ CEILING MOUNT LIGHT
- ⊕ PENDANT LIGHT
- ⊕ RECESSED CAN LIGHT
- ⊕ MINI CAN LIGHT
- ⊕ RECESSED SPOT LIGHT
- ⊕ FLUORESCENT LIGHT
- ⊕ UNDERCABINET LIGHT
- ⊕ SWITCH
- ⊕<sub>3</sub> 3-WAY SWITCH
- ⊕<sub>4</sub> 4-WAY SWITCH
- ⊕<sub>D</sub> DIMMER SWITCH
- ⊕<sub>T</sub> TIMER SWITCH
- ⊕ TELEPHONE
- ⊕ NATURAL GAS
- ⊕ CABLE CONNECTION
- ⊕ RECESSED CEILING SPEAKER
- ⊕ VACUUM OUTLET
- ⊕ DOORBELL CHIME
- ⊕ THERMOSTAT
- ⊕ EXHAUST FAN
- ⊕ 24 HOUR TIMER
- ⊕ 110 V SMOKE DETECTOR
- ⊕ CEILING FAN
- ⊕ CEILING FAN W/ LIGHT

**J.S. THOMPSON  
ENGINEERING, INC**  
1033 WADE AVE., SUITE 104 RALEIGH, NC 27605  
PHONE: (919) 789-9919 FAX: (919) 789-9921

**CL 1934  
CAVINNESS & CATES**

|                         |
|-------------------------|
| DATE: DECEMBER 19, 2007 |
| SCALE: 1/4"=1'-0"       |
| DRAWN BY: CM            |
| ENGINEERED BY: TSZ      |

SHEET: E-1  
FIRST  
FLOOR ELECTRICAL



**ELECTRICAL LEGEND**

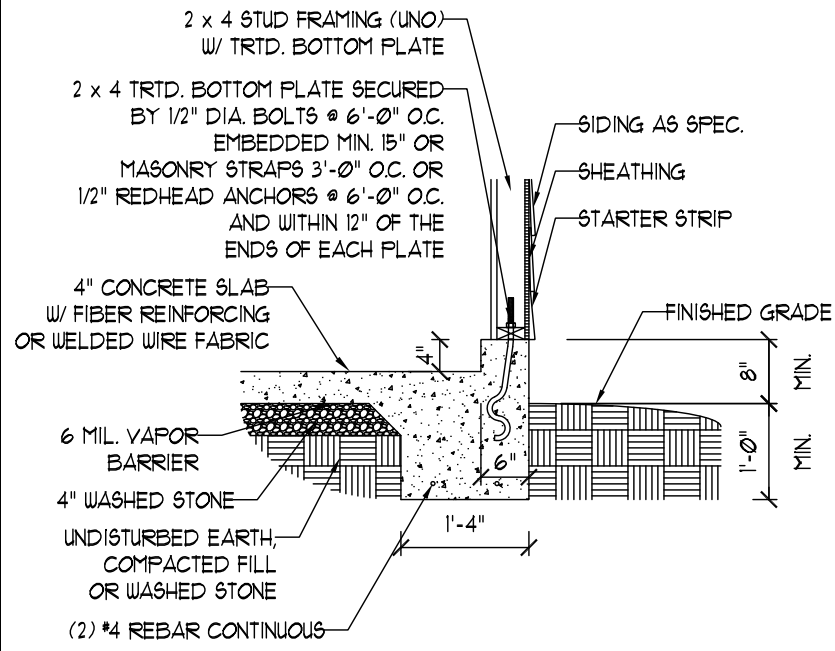
- ⊕ 110 V OUTLET
- ⊕ 110 V GFI OUTLET
- ⊕ 110 V SWITCHED OUTLET
- ⊕ 4-PLEX
- ⊕ COUNTER OR FLOOR MOUNTED
- ⊕ COUNTER OR FLOOR MOUNTED
- ⊕ WEATHERPROOF
- ⊕ 220 V OUTLET
- ⊕ 110 V DIRECT WIRE
- ⊕ 220 V DIRECT WIRE
- ⊕ SPECIAL PURPOSE (240 V, ETC.)
- ⊕ WALL MOUNT LIGHT
- ⊕ CEILING MOUNT LIGHT
- ⊕ PENDANT LIGHT
- ⊕ RECESSED CAN LIGHT
- ⊕ MINI CAN LIGHT
- ⊕ RECESSED SPOT LIGHT
- ⊕ FLUORESCENT LIGHT
- ⊕ UNDERCABINET LIGHT
- ⊕ SWITCH
- ⊕<sub>3</sub> 3-WAY SWITCH
- ⊕<sub>4</sub> 4-WAY SWITCH
- ⊕<sub>D</sub> DIMMER SWITCH
- ⊕<sub>T</sub> TIMER SWITCH
- ⊕ TELEPHONE
- ⊕ NATURAL GAS
- ⊕ CABLE CONNECTION
- ⊕ RECESSED CEILING SPEAKER
- ⊕ VACUUM OUTLET
- ⊕ DOORBELL CHIME
- ⊕ THERMOSTAT
- ⊕ EXHAUST FAN
- ⊕ 24 HOUR TIMER
- ⊕ 110 V SMOKE DETECTOR
- ⊕ CEILING FAN
- ⊕ CEILING FAN W/ LIGHT

**J.S. THOMPSON  
ENGINEERING, INC**  
1033 WADE AVE., SUITE 104 RALEIGH, NC 27605  
PHONE: (919) 789-9919 FAX: (919) 789-9921

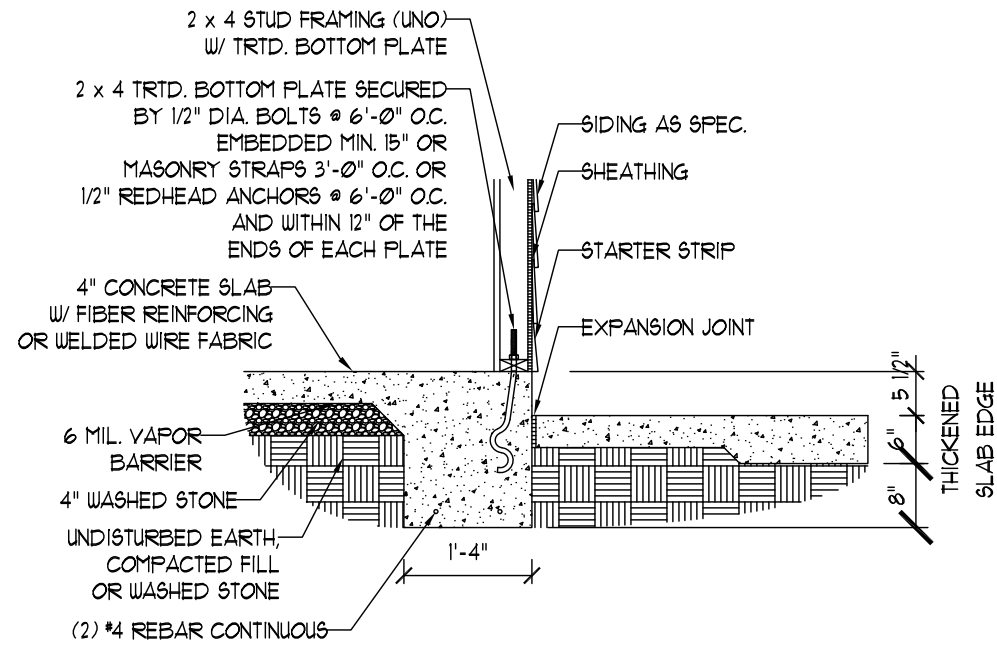
CL 1934  
CAVINNESS & CATES

DATE: DECEMBER 19, 2007  
SCALE: 1/4"=1'-0"  
DRAWN BY: CM  
ENGINEERED BY: TSZ

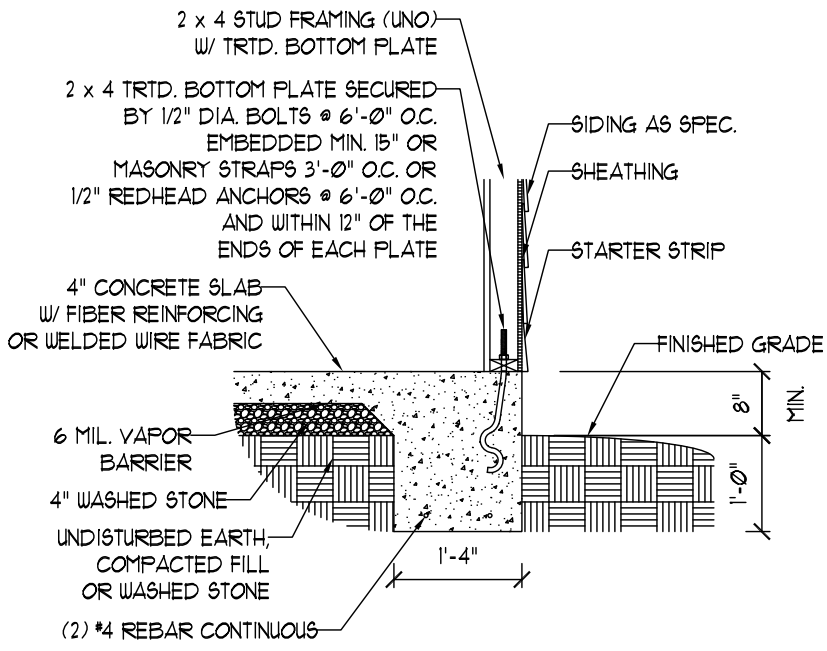
SHEET: E-2  
SECOND  
FLOOR ELECTRICAL



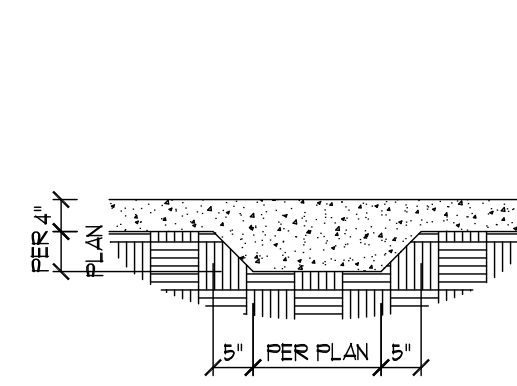
GARAGE CURB DETAIL



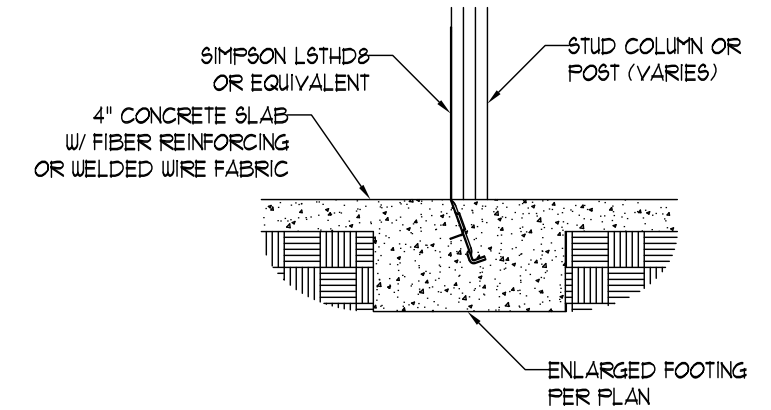
PORCH SLAB DETAIL



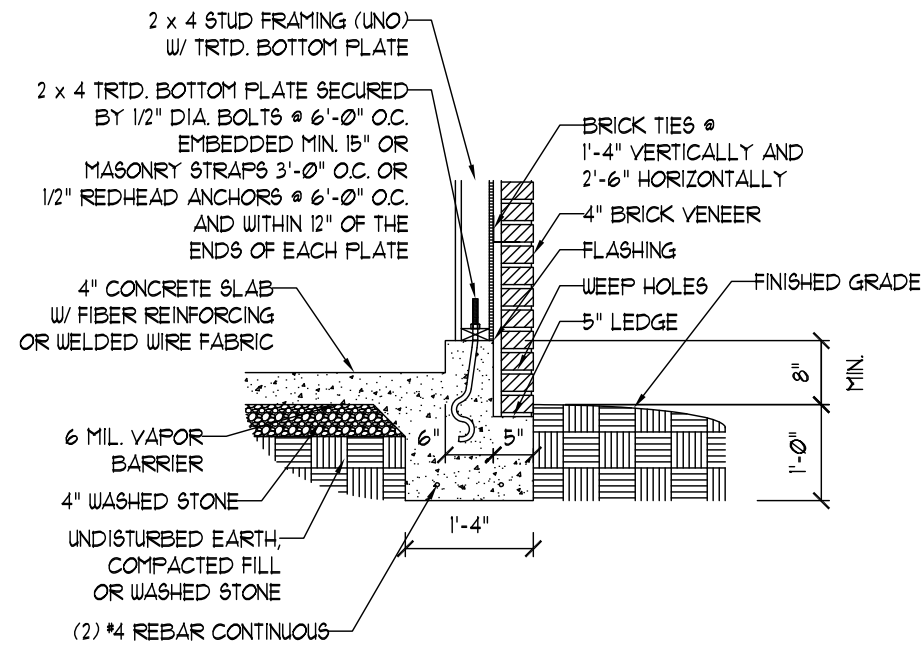
TYPICAL SLAB DETAIL



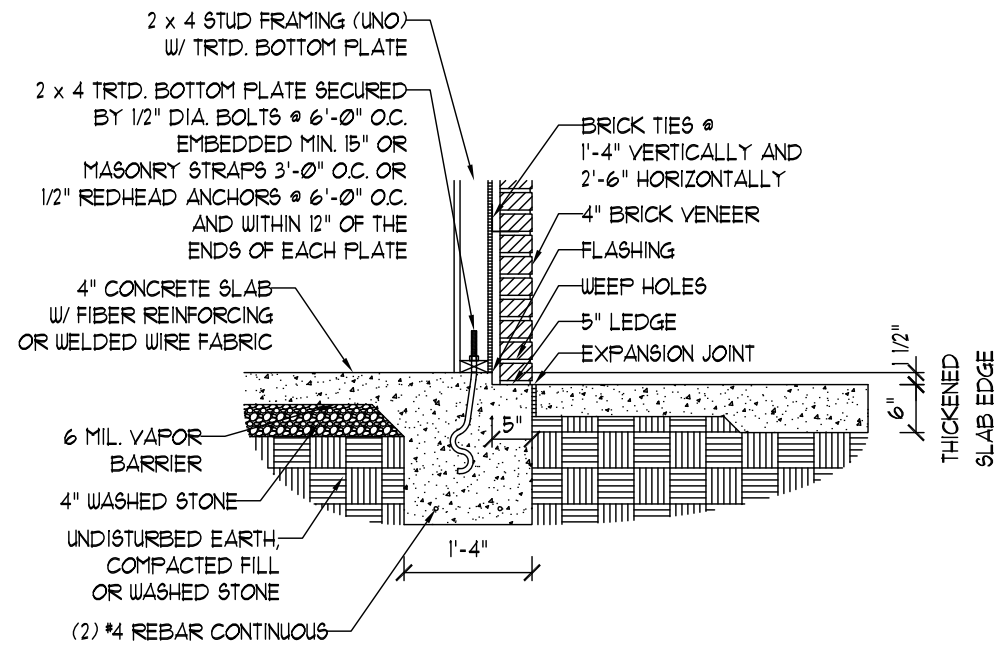
THICKENED SLAB DETAIL



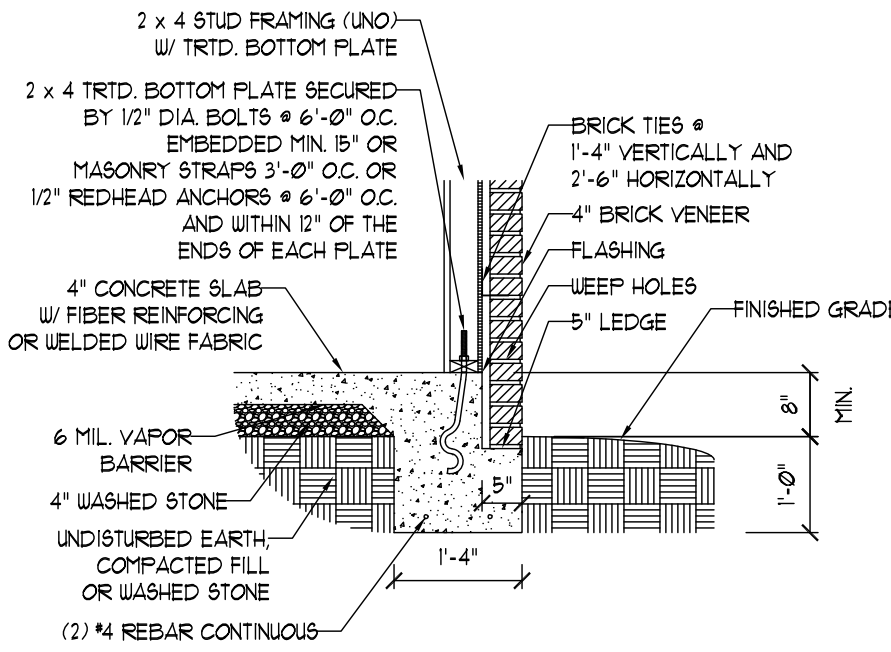
TYPICAL COLUMN CONNECTION DETAIL



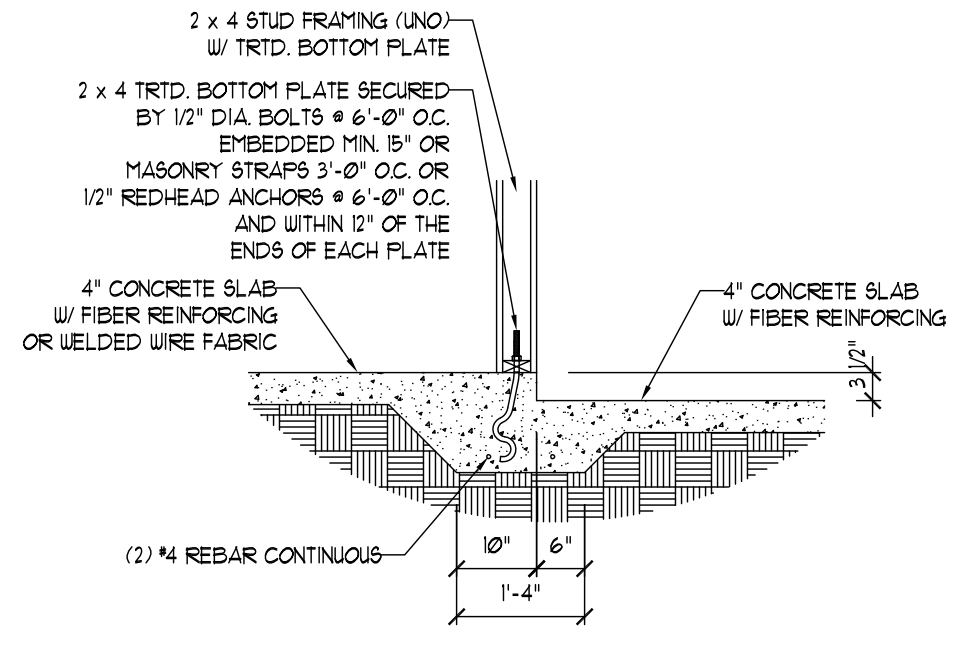
GARAGE CURB BRICK LEDGE DETAIL



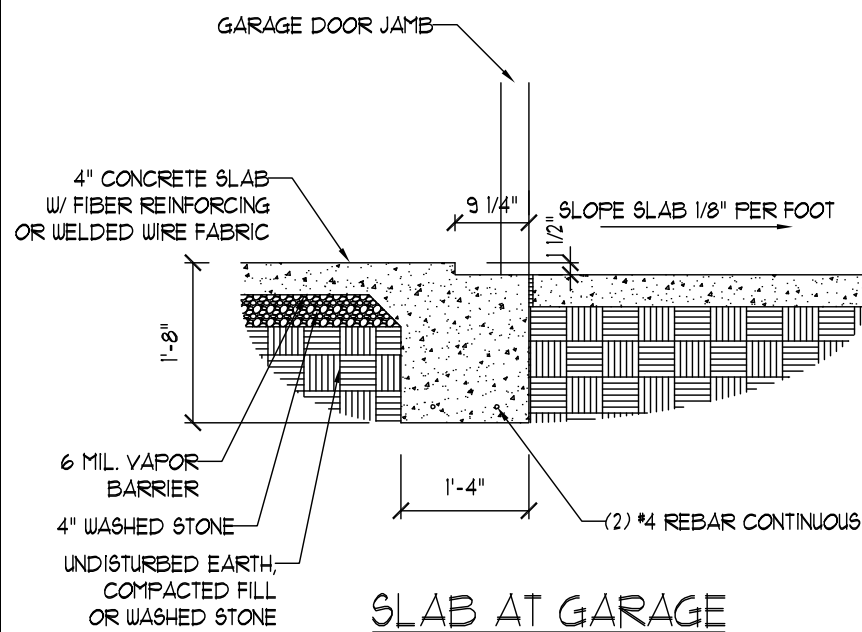
PORCH SLAB W/ BRICK DETAIL



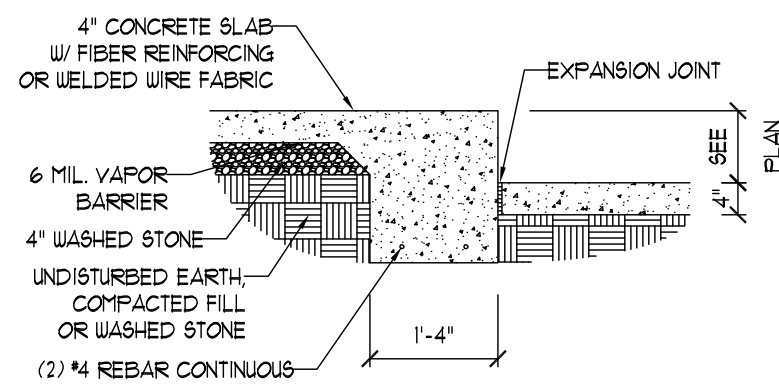
BRICK LEDGE DETAIL



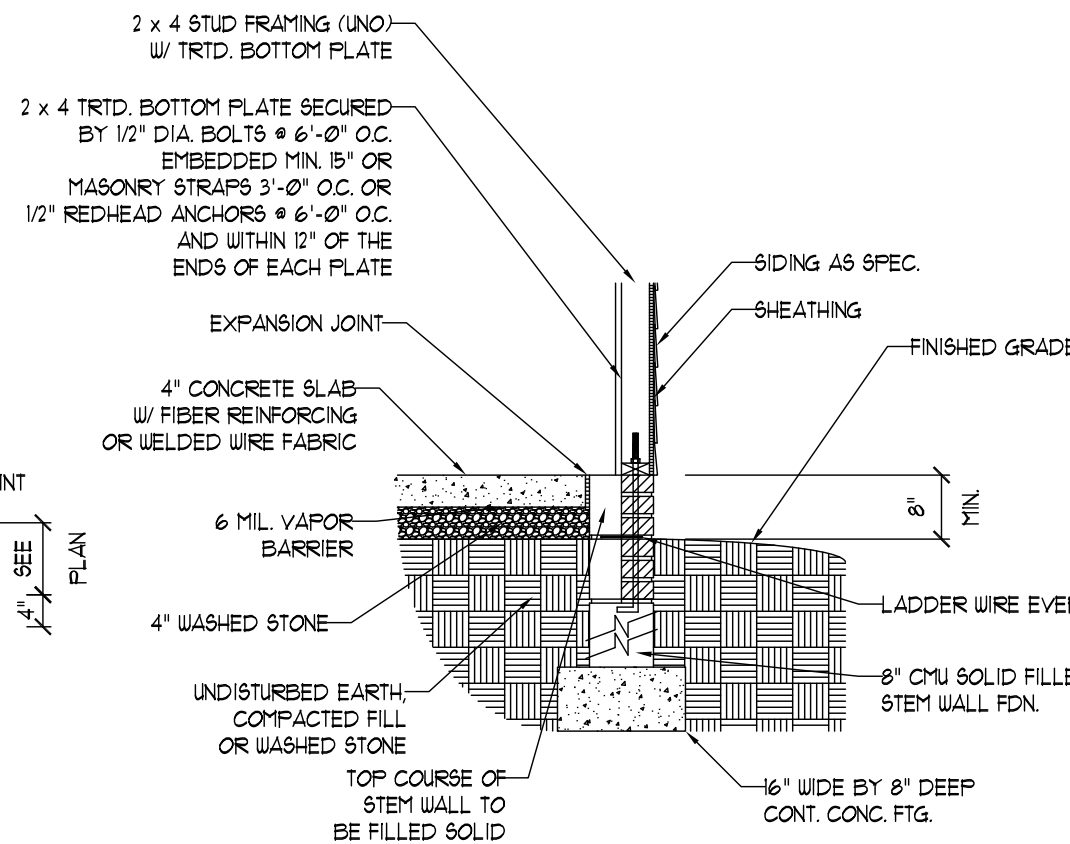
STEP IN GARAGE DETAIL



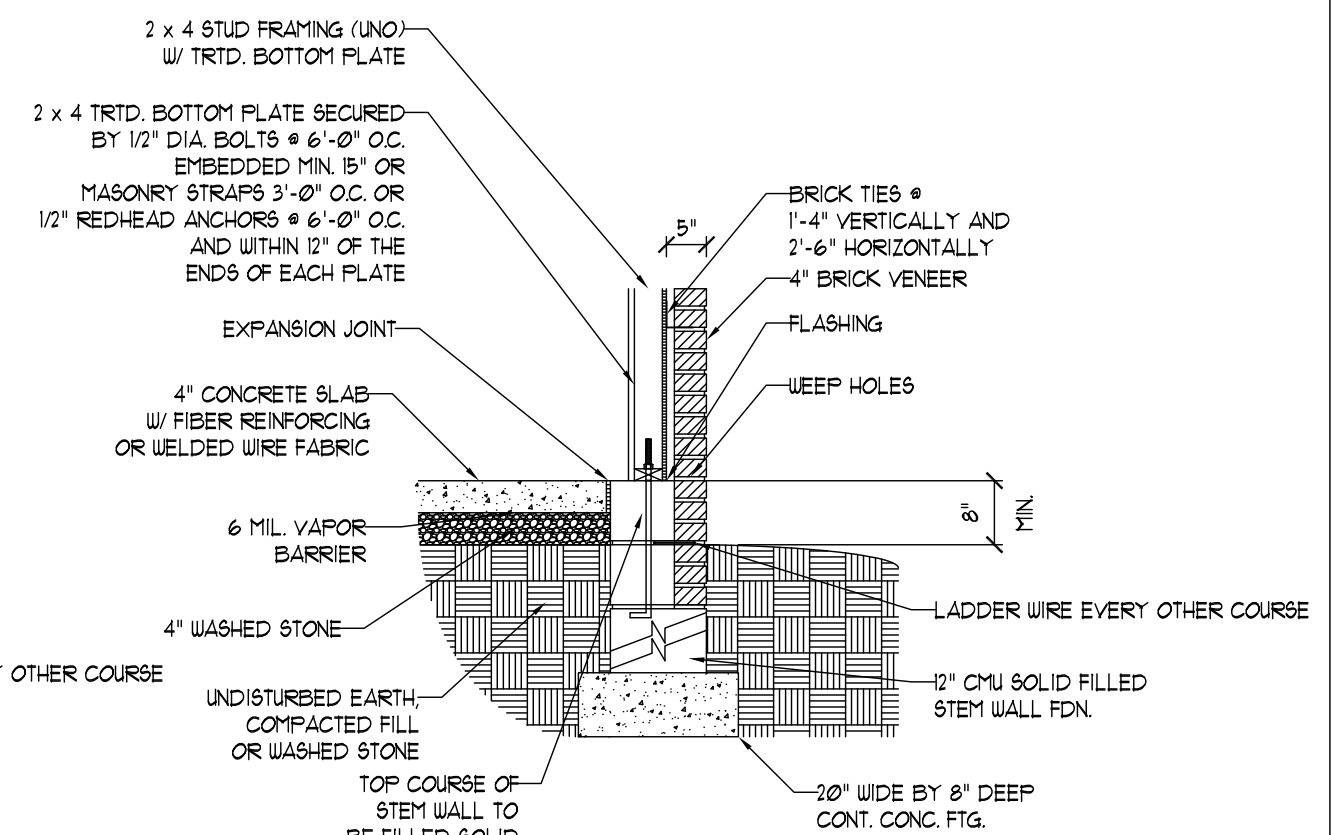
SLAB AT GARAGE DOOR DETAIL



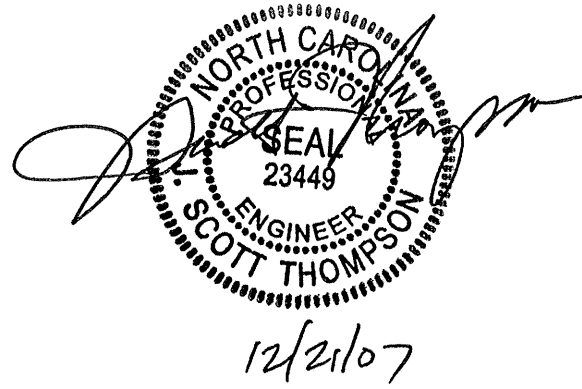
SLAB FLOOR CHANGE DETAIL



STEM WALL FDN. DETAIL



STEM WALL FDN. W/ BRICK DETAIL



**J.S. THOMPSON**  
ENGINEERING, INC.  
1033 WADE AVE., SUITE 104 RALEIGH, NC 27605  
PHONE: (919) 789-9919 FAX: (919) 789-9921

**MONOLITHIC**  
**SLAB DETAILS**

DATE: DECEMBER 19, 2007  
SCALE: 1/4"=1'-0"  
DRAWN BY: TSZ  
ENGINEERED BY: TSZ

SHEET: DETAILS