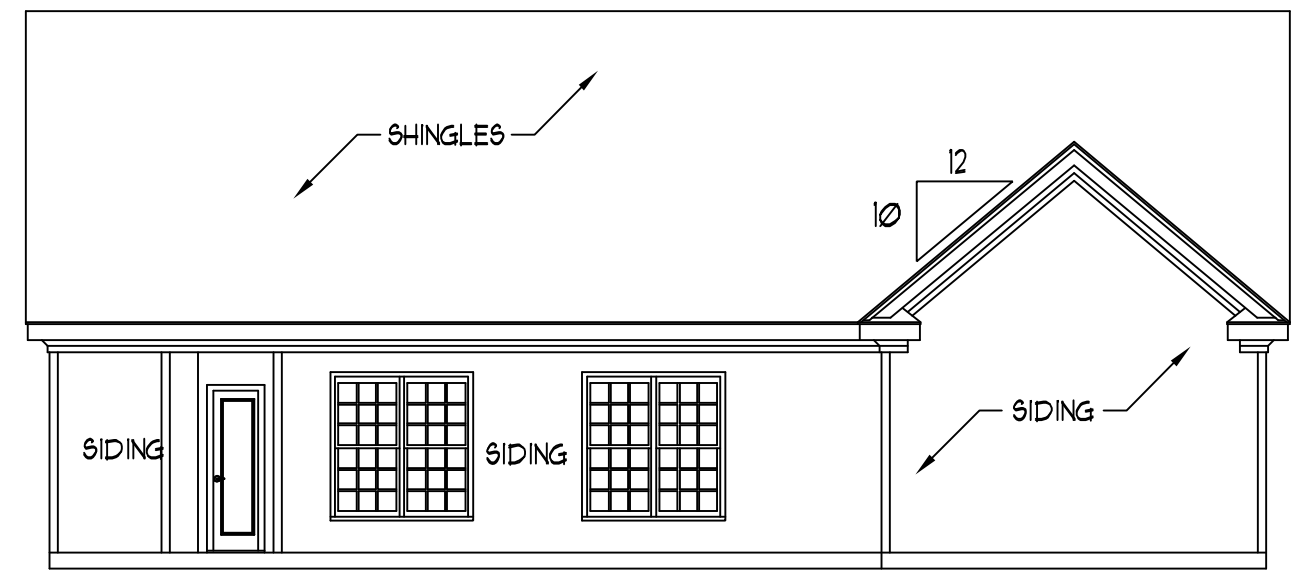
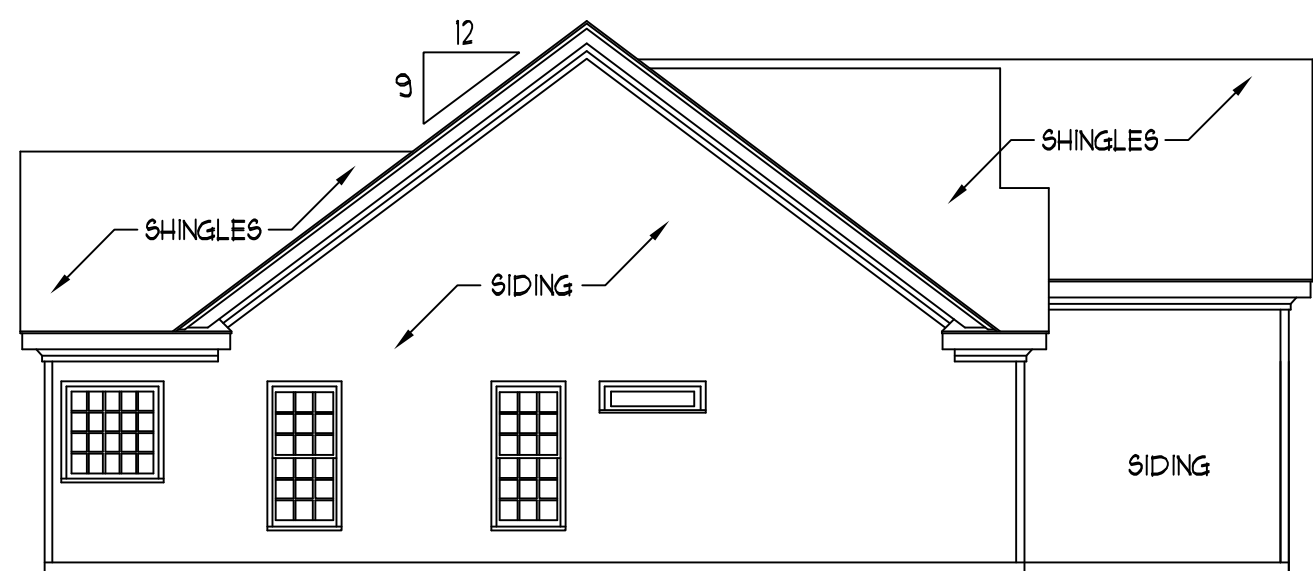




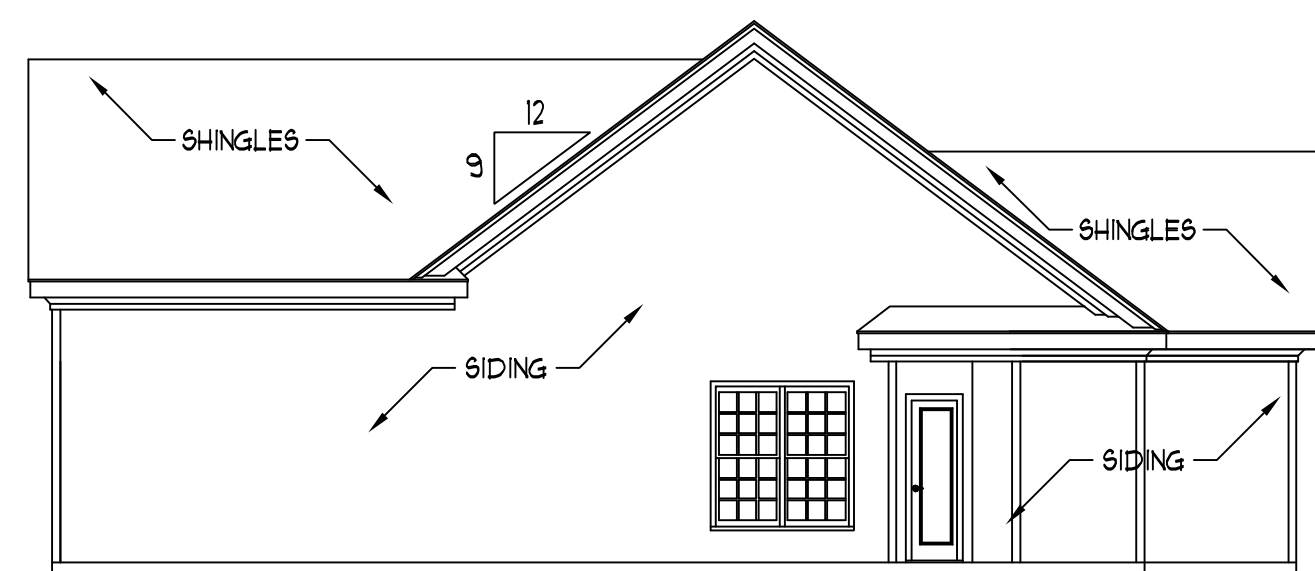
FRONT ELEVATION  
SCALE: 1/4" = 1'-0"



REAR ELEVATION  
SCALE: 1/8" = 1'-0"



LEFT ELEVATION  
SCALE: 1/8" = 1'-0"



RIGHT ELEVATION  
SCALE: 1/8" = 1'-0"

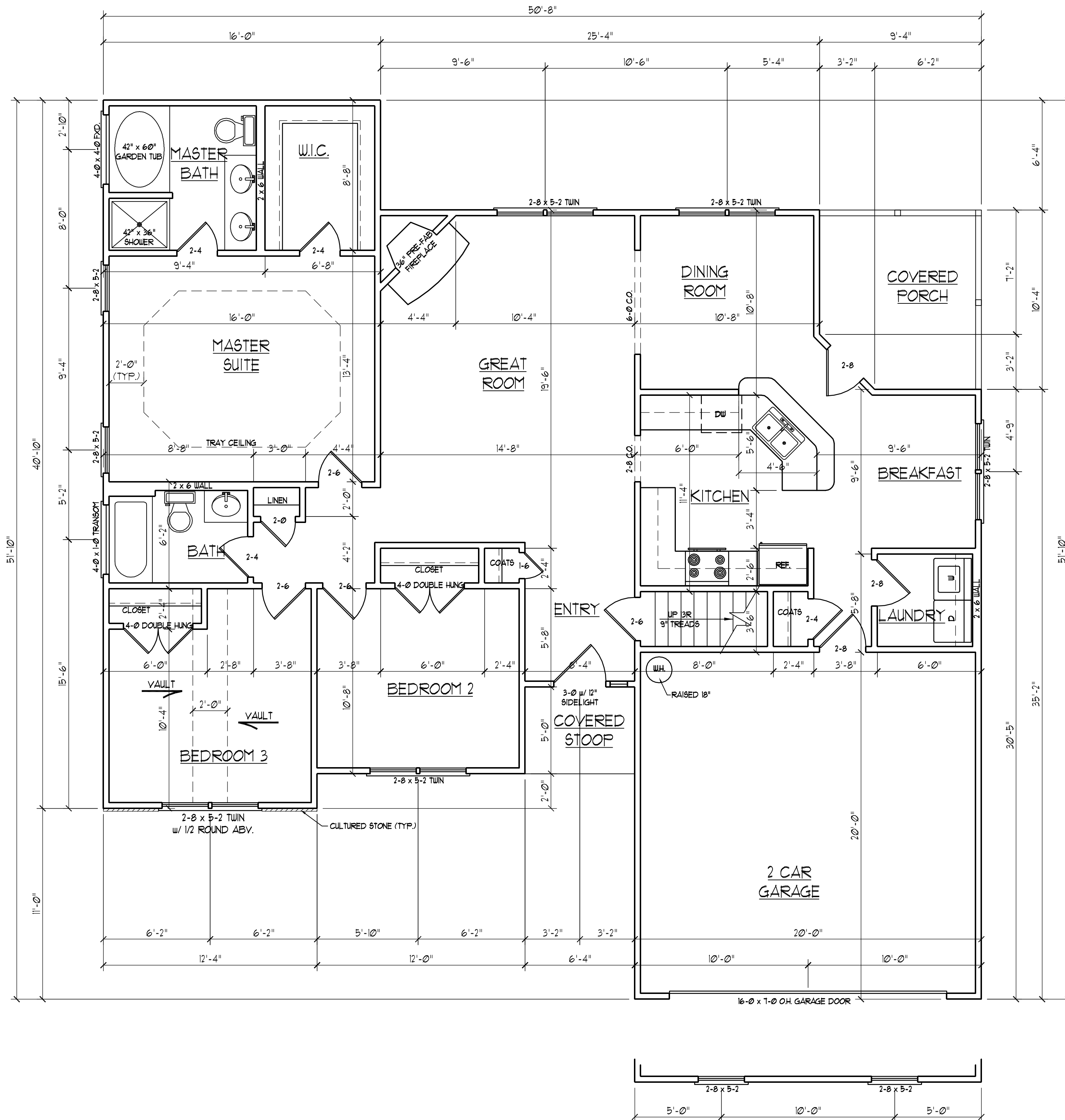
- NOTES:
- 1) STRUCTURAL DESIGN PER NORTH CAROLINA STATE BUILDING CODE: RESIDENTIAL CODE, 2006 EDITION.
  - 2) INSTALL 1/2" ANCHOR BOLTS 6'-0" O.C. AND WITHIN 1'-0" FROM END OF EACH PLATE.
  - 3) MEAN ROOF HEIGHT IS LESS THAN 30 FEET.
  - 4) EXTERIOR WALLS DESIGNED FOR 100 MPH WINDS.
  - 5) WALL CLADDING DESIGNED FOR 24.1 PSF (POSITIVE AND NEGATIVE).
  - 6) ROOF CLADDING DESIGNED FOR 210 PSF (POSITIVE AND NEGATIVE) FOR ROOF PITCHES 1/12 TO 12/12, AND 34.8 PSF (POSITIVE AND NEGATIVE) FOR ROOF PITCHES 2.25/12 TO 1/12.
  - 7) WALLS TO BE BRACED IN ACCORDANCE WITH SECTION R602.10 OF THE NORTH CAROLINA STATE BUILDING CODE: RESIDENTIAL CODE, 2006 EDITION.

**J.S. THOMPSON  
ENGINEERING, INC**  
1033 WADE AVE., SUITE 104 RALEIGH, NC 27605  
PHONE: (919) 789-9919 FAX: (919) 789-9921

CL 1826  
CAVINESS LAND

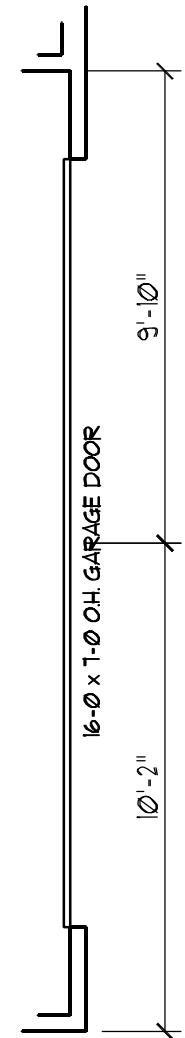
DATE: JANUARY 25, 2008  
SCALE: AS NOTED  
DRAWN BY: CM  
ENGINEERED BY: JBW

SHEET 1 OF 8  
ELEVATIONS



SQUARE FOOTAGE	
1st FLOOR:	1510 SQ. FT.
2nd FLOOR:	316 SQ. FT.
TOTAL:	1826 SQ. FT.
FRONT PORCH:	32 SQ. FT.
REAR PORCH:	91 SQ. FT.
GARAGE:	399 SQ. FT.

- GENERAL NOTES**
- 1) ALL WORK SHALL BE PERFORMED IN ACCORDANCE WITH ALL APPLICABLE NATIONAL, STATE, AND LOCAL CODES AND REGULATIONS.
  - 2) CONTRACTOR SHALL VERIFY ALL CONDITIONS AND DIMENSIONS AT SITE BEFORE BEGINNING CONSTRUCTION. ANY DISCREPANCIES SHALL BE REPORTED TO J.S. THOMPSON ENGINEERING, INC. FOR JUSTIFICATION AND/OR CORRECTION BEFORE PROCEEDING WITH WORK. CONTRACTORS SHALL ASSUME RESPONSIBILITY FOR ERRORS THAT ARE NOT REPORTED PRIOR TO CONSTRUCTION.
  - 3) ALL DIMENSIONS SHOULD BE READ OR CALCULATED AND NEVER SCALED.
  - 4) CONTRACTOR SHALL INSURE COMPATIBILITY OF THE BUILDING WITH ALL SITE REQUIREMENTS.

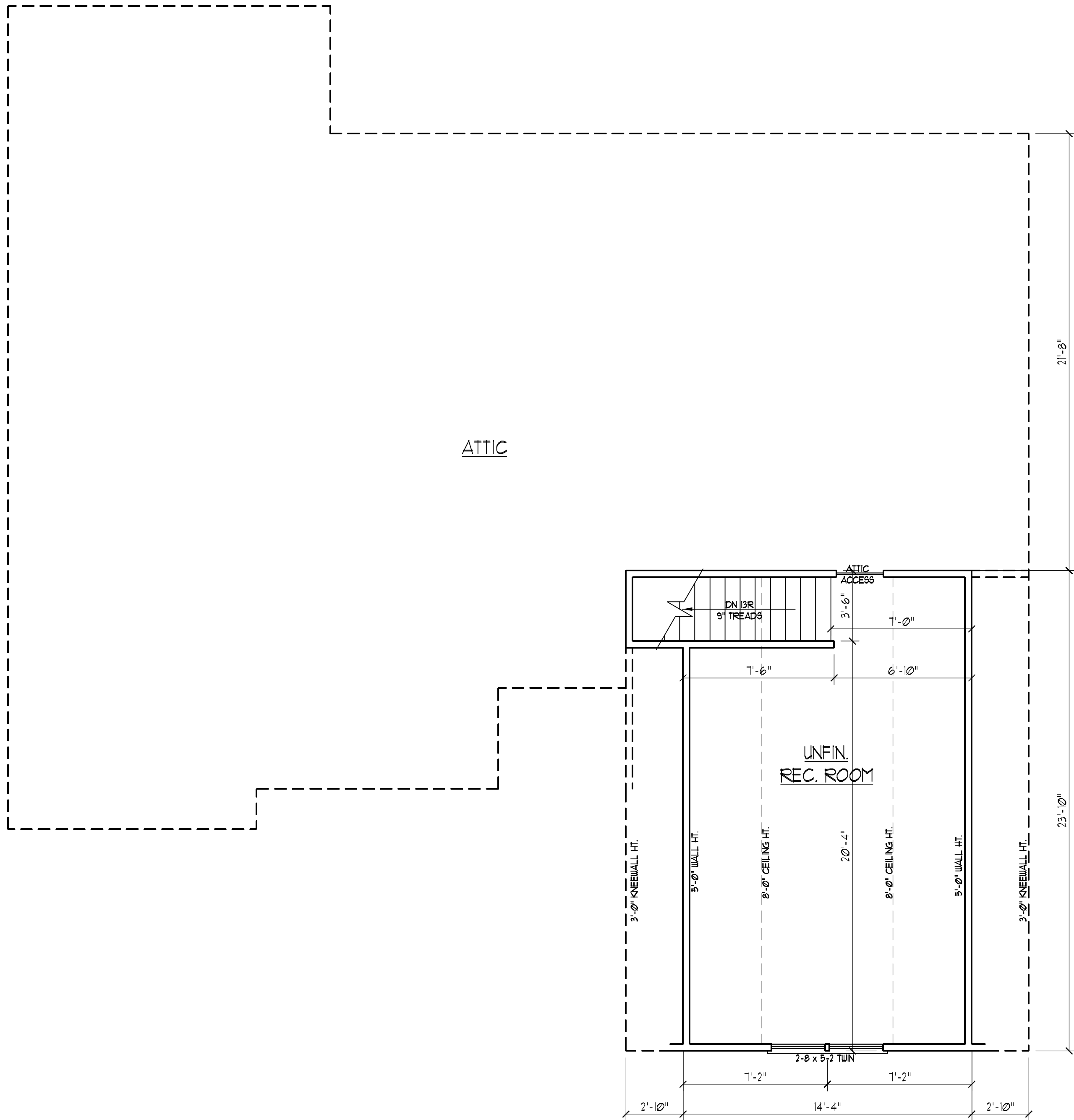


**J.S. THOMPSON  
ENGINEERING, INC.**  
1033 WADE AVE., SUITE 104 RALEIGH, NC 27605  
PHONE: (919) 789-9919 FAX: (919) 789-9921

CL 1826  
CAVINNESS LAND

DATE:	JANUARY 25, 2008
SCALE:	1/4"=1'-0"
DRAWN BY:	CM
ENGINEERED BY:	JBW

SHEET 2 OF 8  
FIRST FLOOR PLAN



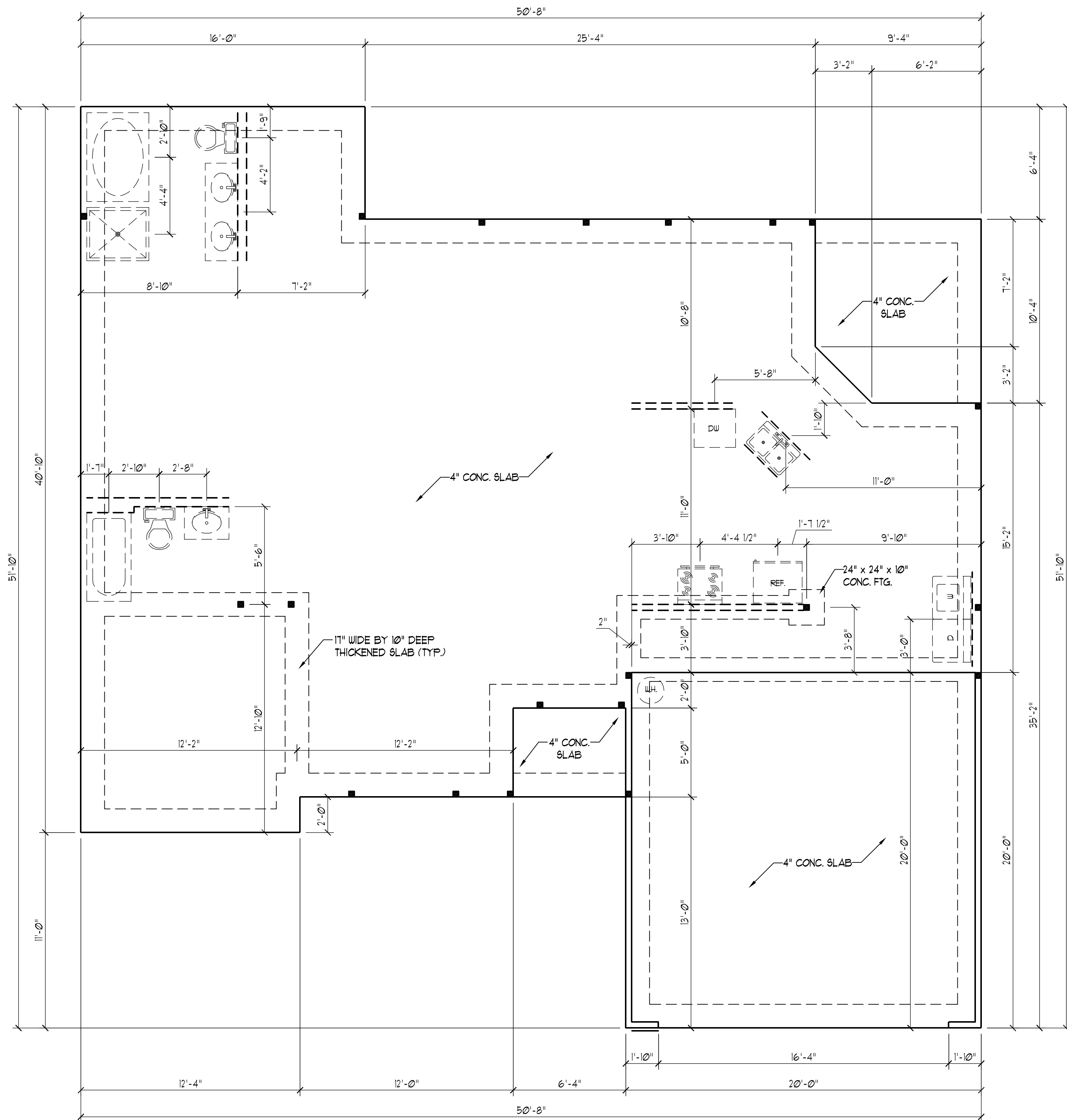
**J.S. THOMPSON**  
**ENGINEERING, INC**  
 1033 WADE AVE., SUITE 104 RALEIGH, NC 27605  
 PHONE: (919) 789-9919 FAX: (919) 789-9921

CL 1826  
 CAVINESS LAND

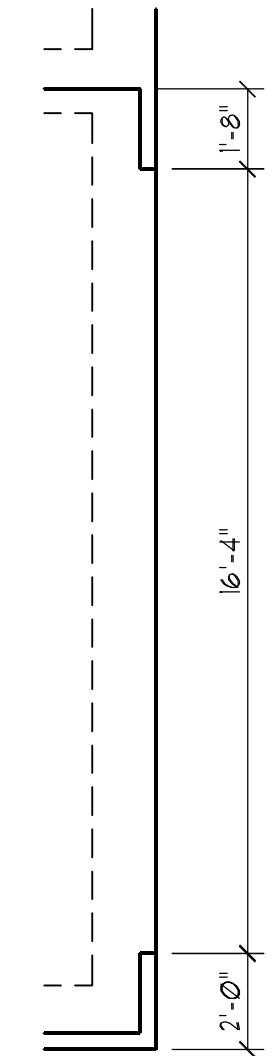
DATE: JANUARY 25, 2008  
 SCALE: 1/4"=1'-0"  
 DRAWN BY: CM  
 ENGINEERED BY: JBW

SHEET 3 OF 8  
 SECOND FLOOR PLAN





**STRUCTURAL NOTES:**  
SEE DETAILS PAGE FOR TYPICAL NOTES AND SECTIONS.

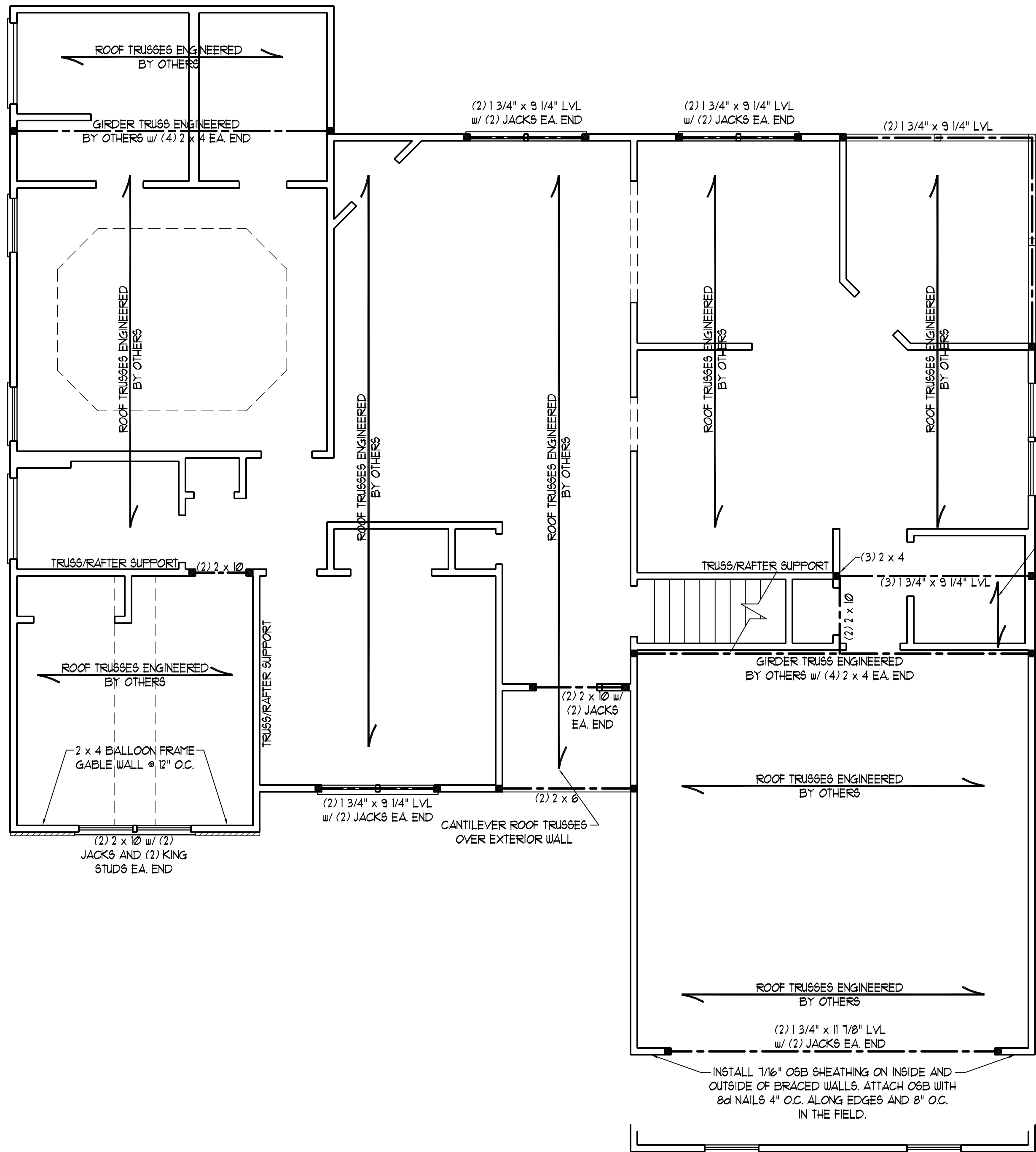


**J.S. THOMPSON**  
**ENGINEERING, INC**  
1033 WADE AVE., SUITE 104 RALEIGH, NC 27605  
PHONE: (919) 789-9919 FAX: (919) 789-9921

CL 1826  
CAVINNESS LAND

DATE: JANUARY 25, 2008  
SCALE: 1/4"=1'-0"  
DRAWN BY: CM  
ENGINEERED BY: JBW

SHEET 5 OF 8  
SLAB  
FOUNDATION PLAN



**STRUCTURAL NOTES:**

- 1) ALL FRAMING LUMBER TO BE #2 SFF (UNO).
- 2) ALL LOAD BEARING HEADERS TO BE (2) 2 x 10 (UNO).
- 3) ALL BEAMS ARE TO BE SUPPORTED WITH (2) 2 x 4 PER END (UNO).
- 4) SQUARES DENOTE POINT LOADS WHICH REQUIRE SOLID BLOCKING TO FOUNDATION.



LADDER FRAME BETWEEN GIRDER TRUSS AND TRUSS SUPPORT  
w/ 2 x 10 FLOOR JOISTS @ 16" O.C.,  
2 x 4 CEILING JOISTS @ 16" O.C.,  
AND 2 x 4 RAFTERS @ 16" O.C.

(2) 1 3/4" x 10" LVL  
w/ (3) JACKS EA. END

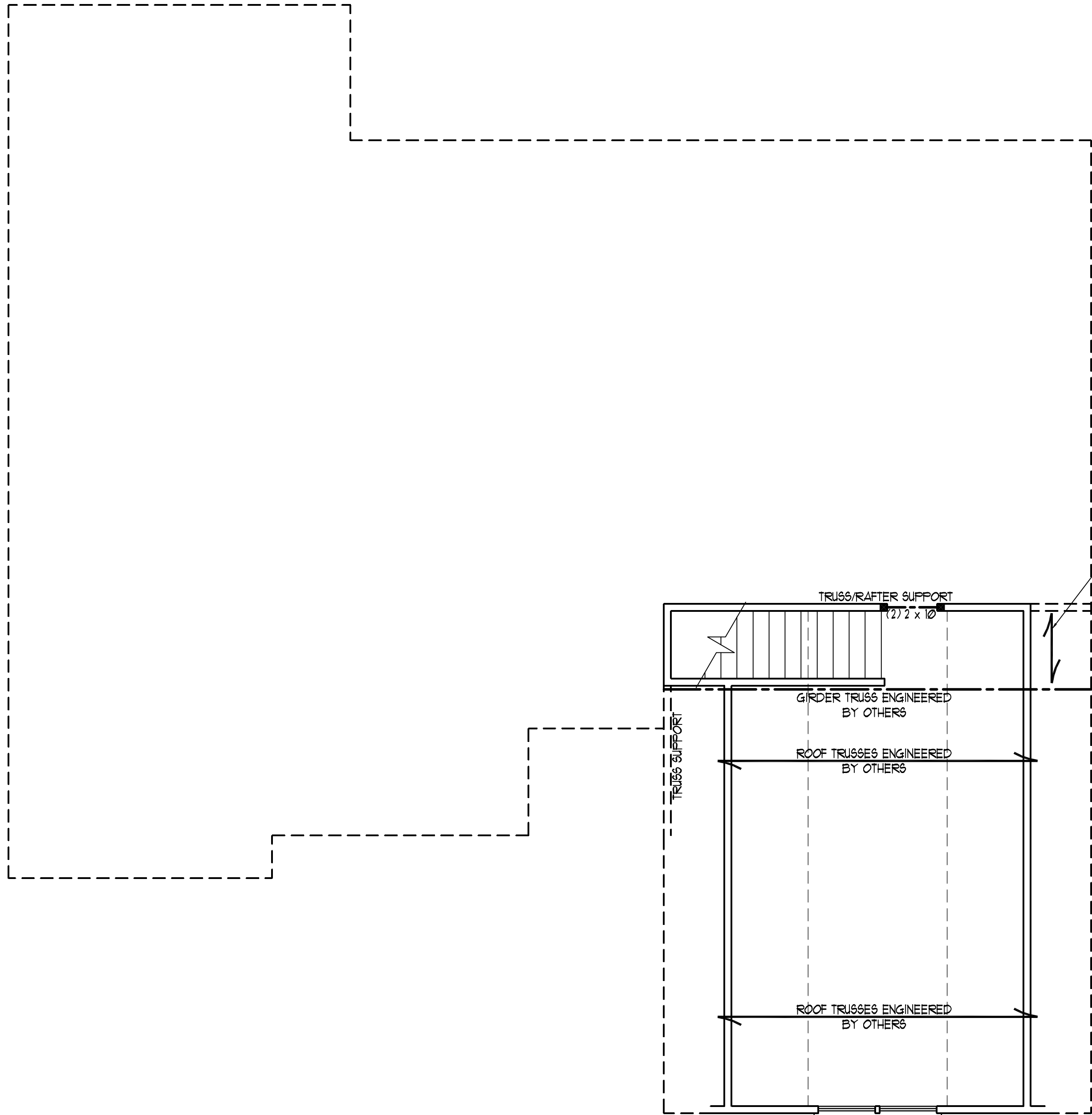
INSTALL 7/16" OSB SHEATHING ON INSIDE AND OUTSIDE OF BRACED WALLS. ATTACH OSB WITH 8d NAILS 4" O.C. ALONG EDGES AND 8" O.C. IN THE FIELD.

**J.S. THOMPSON  
ENGINEERING, INC**  
1033 WADE AVE., SUITE 104 RALEIGH, NC 27605  
PHONE: (919) 789-9919 FAX: (919) 789-9921

CL 1826  
CAVINNESS LAND

DATE: JANUARY 25, 2008  
SCALE: 1/4"=1'-0"  
DRAWN BY: CM  
ENGINEERED BY: JBW

SHEET 6 OF 8  
SECOND FLOOR  
FRAMING PLAN



LADDER FRAME BETWEEN GIRDER TRUSS AND TRUSS SUPPORT  
 w/ 2 x 10 FLOOR JOISTS @ 16" O.C.,  
 2 x 4 CEILING JOISTS @ 16" O.C.,  
 AND 2 x 4 RAFTERS @ 16" O.C.



- STRUCTURAL NOTES:**
- 1) ALL FRAMING LUMBER TO BE #2 SFF (UNO).
  - 2) ALL LOAD BEARING HEADERS TO BE (2) 2 x 10 (UNO).
  - 3) ALL BEAMS ARE TO BE SUPPORTED WITH (2) 2 x 4 PER END (UNO).
  - 4) SQUARES DENOTE POINT LOADS WHICH REQUIRE SOLID BLOCKING TO FOUNDATION.

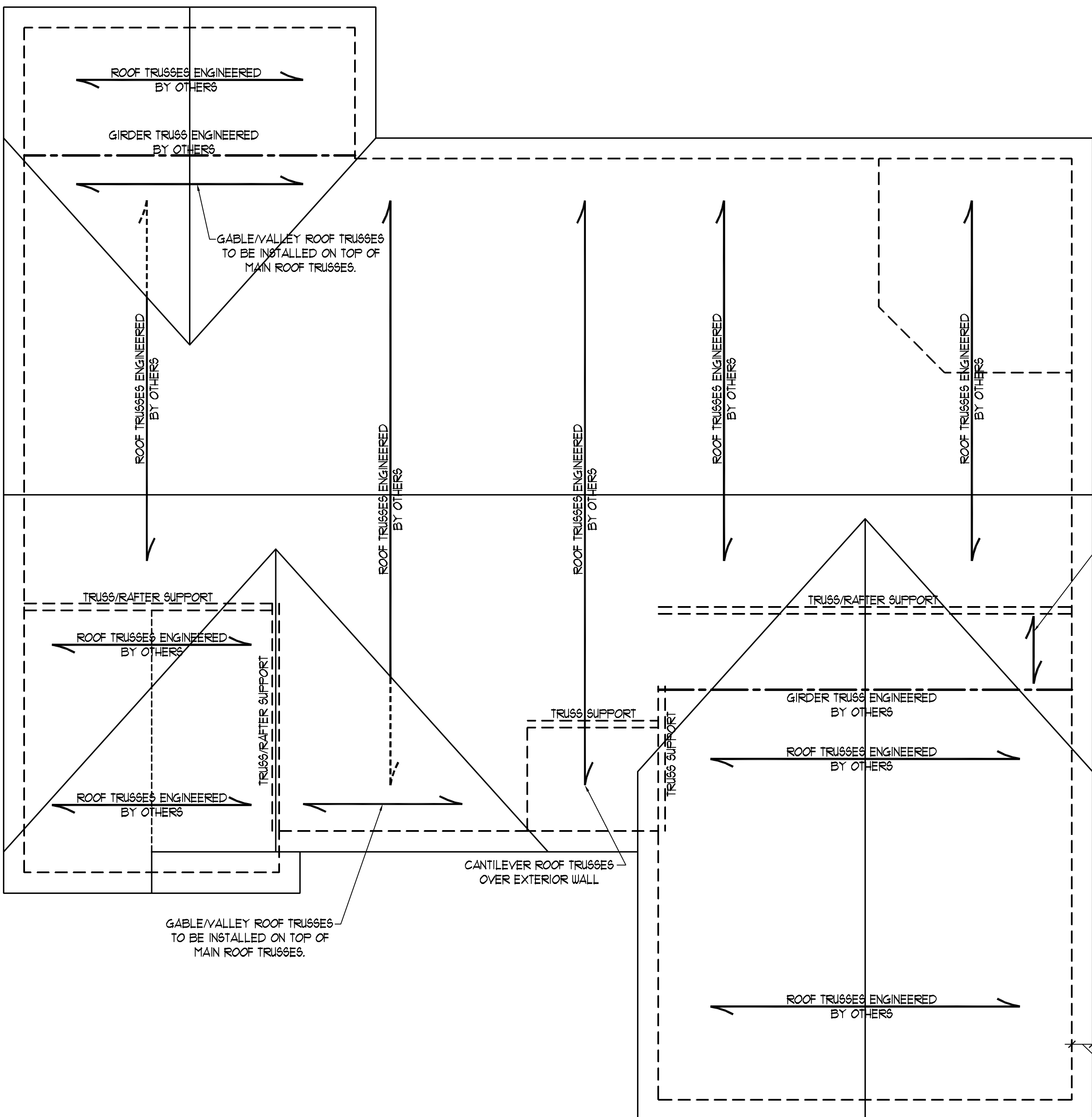
**J.S. THOMPSON  
 ENGINEERING, INC**  
 1033 WADE AVE., SUITE 104 RALEIGH, NC 27605  
 PHONE: (919) 789-9919 FAX: (919) 789-9921

CL 1826  
 CAVINESS LAND

DATE: JANUARY 25, 2008  
 SCALE: 1/4"=1'-0"  
 DRAWN BY: CM  
 ENGINEERED BY: JBW

SHEET 7 OF 8  
 ATTIC FRAMING PLAN

**ATTIC VENT CALCULATION:**  
 2246 SQ. FT. OF ATTIC DIVIDED BY  
 150 REQUIRES 15.0 SQ. FT. OF NET  
 FREE VENTILATING AREA (MIN.)



LADDER FRAME BETWEEN GIRDER TRUSS AND TRUSS SUPPORT  
 W/ 2 x 10 FLOOR JOISTS @ 16" O.C.,  
 2 x 4 CEILING JOISTS @ 16" O.C.,  
 AND 2 x 4 RAFTERS @ 16" O.C.



1'-0" OVERHANG (TYP.)

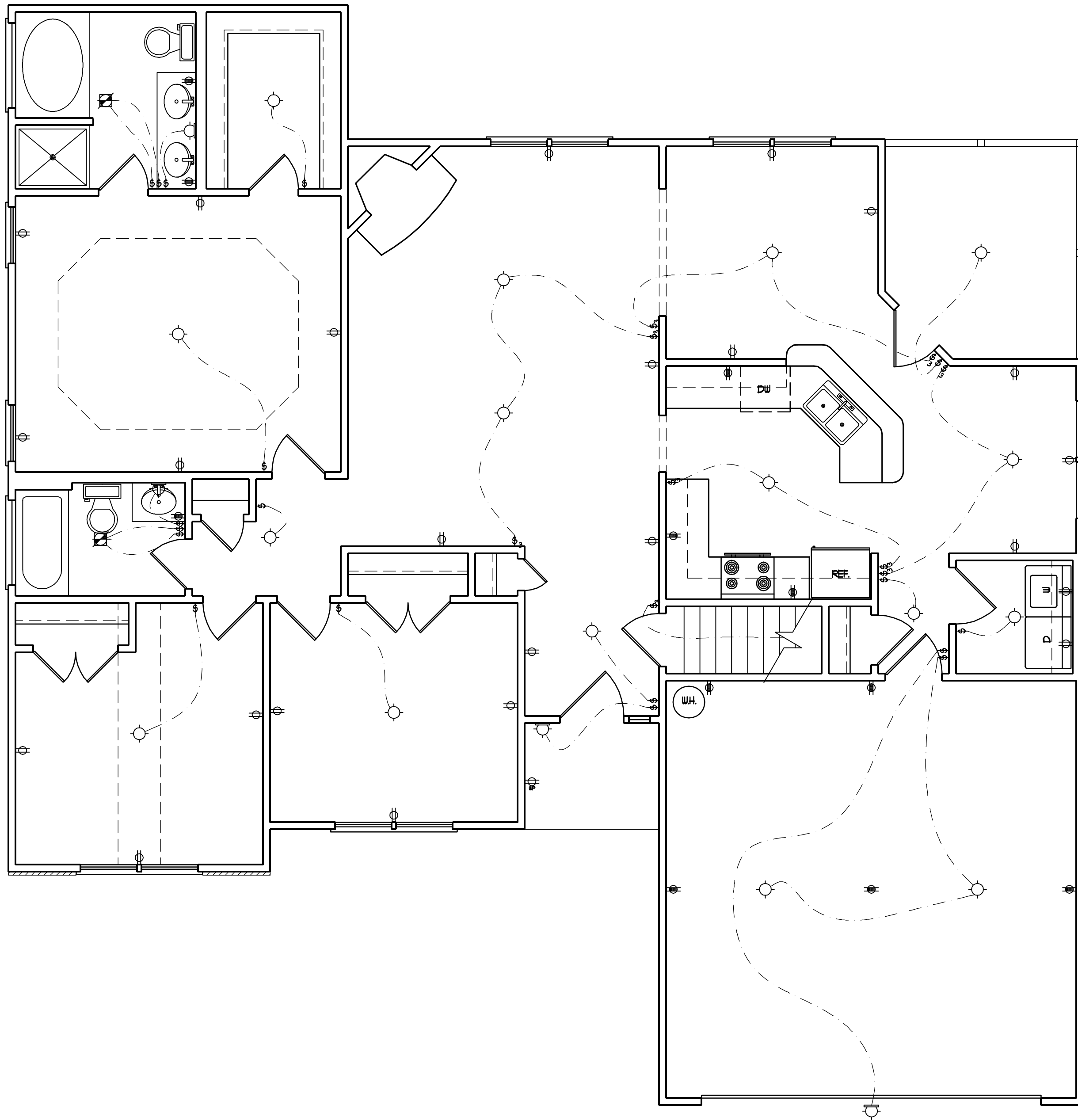
**STRUCTURAL NOTES:**  
 1) ALL STICK FRAMING LUMBER TO BE #2 SPF (UNO).  
 2) OVER-FRAMED ROOF SECTIONS MAY BE CONSTRUCTED W/ 2 x 8 RIDGES, 2 x 6 RAFTERS @ 16" O.C. AND FLAT 2 x 10 VALLEYS.

**J.S. THOMPSON  
 ENGINEERING, INC**  
 1033 WADE AVE., SUITE 104 RALEIGH, NC 27605  
 PHONE: (919) 789-9919 FAX: (919) 789-9921

CL 1826  
 CAVINESS LAND

DATE: JANUARY 25, 2008  
 SCALE: 1/4"=1'-0"  
 DRAWN BY: CM  
 ENGINEERED BY: JBW

SHEET: 8 OF 8  
 ROOF PLAN



**ELECTRICAL LEGEND**

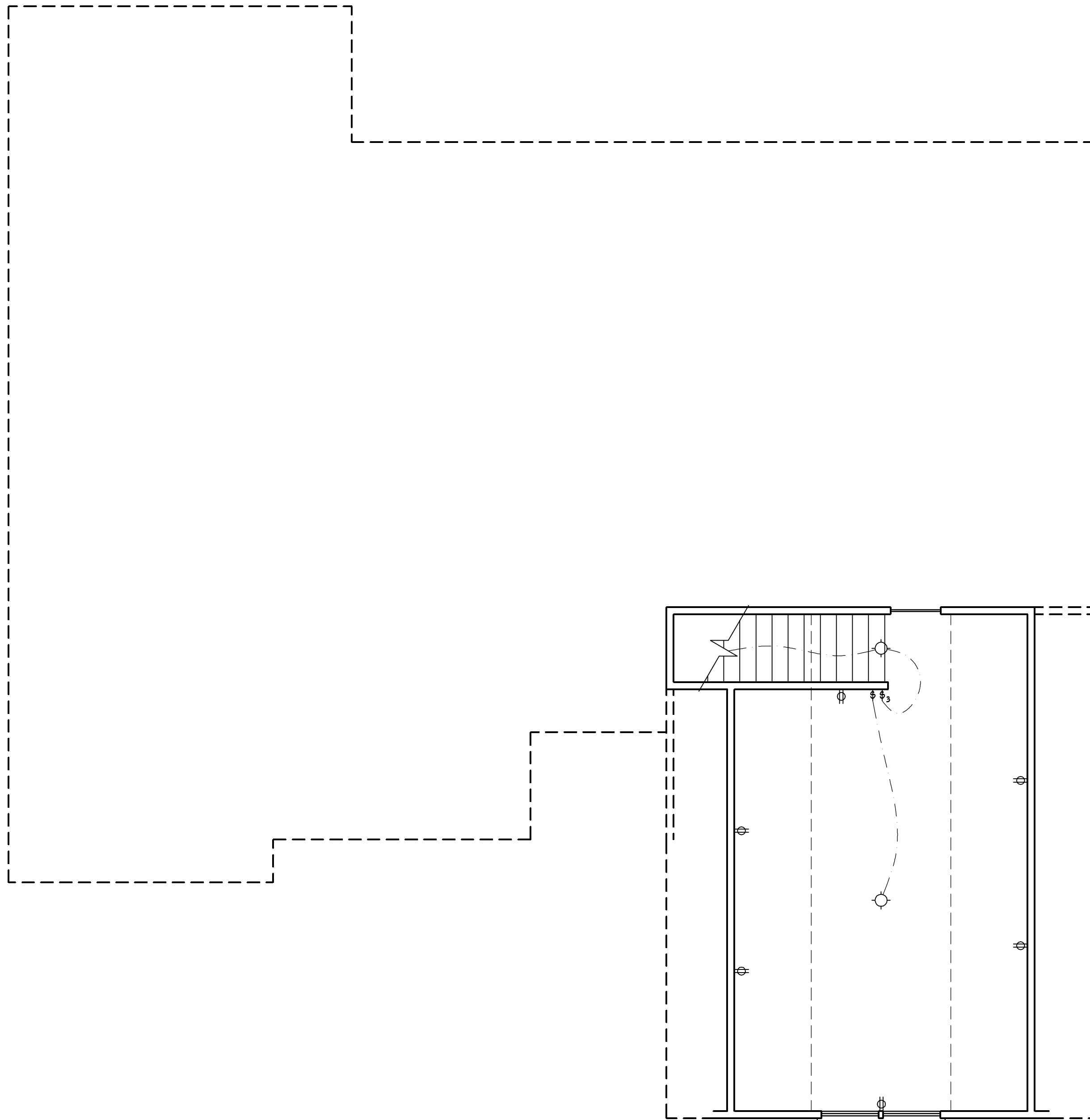
- ⊕ 110 V OUTLET
- ⊕ 110 V GFI OUTLET
- ⊕ 110 V SWITCHED OUTLET
- ⊕ 4-PLEX
- ⊕ COUNTER OR FLOOR MOUNTED
- ⊕ COUNTER OR FLOOR MOUNTED
- ⊕ WEATHERPROOF
- ⊕ 220 V OUTLET
- ⊕ 110 V DIRECT WIRE
- ⊕ 220 V DIRECT WIRE
- ⊕ SPECIAL PURPOSE (240 V, ETC.)
- ⊕ WALL MOUNT LIGHT
- ⊕ CEILING MOUNT LIGHT
- ⊕ PENDANT LIGHT
- ⊕ RECESSED CAN LIGHT
- ⊕ MINI CAN LIGHT
- ⊕ RECESSED SPOT LIGHT
- ⊕ FLUORESCENT LIGHT
- ⊕ UNDERCABINET LIGHT
- ⊕ SWITCH
- ⊕ 3-WAY SWITCH
- ⊕ 4-WAY SWITCH
- ⊕ DIMMER SWITCH
- ⊕ TIMER SWITCH
- ⊕ TELEPHONE
- ⊕ NATURAL GAS
- ⊕ CABLE CONNECTION
- ⊕ RECESSED CEILING SPEAKER
- ⊕ VACUUM OUTLET
- ⊕ DOORBELL CHIME
- ⊕ THERMOSTAT
- ⊕ EXHAUST FAN
- ⊕ 24 HOUR TIMER
- ⊕ 110 V SMOKE DETECTOR
- ⊕ CEILING FAN
- ⊕ CEILING FAN W/ LIGHT

**J.S. THOMPSON  
ENGINEERING, INC**  
1033 WADE AVE., SUITE 104 RALEIGH, NC 27605  
PHONE: (919) 789-9919 FAX: (919) 789-9921

**CL 1826  
CAVINNESS LAND**

DATE: JANUARY 25, 2008  
SCALE: 1/4"=1'-0"  
DRAWN BY: CM  
ENGINEERED BY: JBW

SHEET: E-1  
FIRST  
FLOOR ELECTRICAL



**ELECTRICAL LEGEND**

- ⊕ 110 V OUTLET
- ⊕ 110 V GFI OUTLET
- ⊕ 110 V SWITCHED OUTLET
- ⊕ 4-FLEX
- ⊕ COUNTER OR FLOOR MOUNTED
- ⊕ COUNTER OR FLOOR MOUNTED
- ⊕ WEATHERPROOF
- ⊕ 220 V OUTLET
- ⊕ 110 V DIRECT WIRE
- ⊕ 220 V DIRECT WIRE
- ⊕ SPECIAL PURPOSE (240 V, ETC.)
- ⊕ WALL MOUNT LIGHT
- ⊕ CEILING MOUNT LIGHT
- ⊕ PENDANT LIGHT
- ⊕ RECESSED CAN LIGHT
- ⊕ MINI CAN LIGHT
- ⊕ RECESSED SPOT LIGHT
- ⊕ FLUORESCENT LIGHT
- ⊕ UNDERCABINET LIGHT
- ⊕ SWITCH
- ⊕<sub>3</sub> 3-WAY SWITCH
- ⊕<sub>4</sub> 4-WAY SWITCH
- ⊕<sub>D</sub> DIMMER SWITCH
- ⊕<sub>T</sub> TIMER SWITCH
- ⊕ TELEPHONE
- ⊕ NATURAL GAS
- ⊕ CABLE CONNECTION
- ⊕ RECESSED CEILING SPEAKER
- ⊕ VACUUM OUTLET
- ⊕ DOORBELL CHIME
- ⊕ THERMOSTAT
- ⊕ EXHAUST FAN
- ⊕ 24 HOUR TIMER
- ⊕ 110 V SMOKE DETECTOR
- ⊕ CEILING FAN
- ⊕ CEILING FAN W/ LIGHT

**J.S. THOMPSON  
ENGINEERING, INC**  
1033 WADE AVE., SUITE 104 RALEIGH, NC 27605  
PHONE: (919) 789-9919 FAX: (919) 789-9921

**CL 1826  
CAVINNESS LAND**

DATE: JANUARY 25, 2008  
SCALE: 1/4"=1'-0"  
DRAWN BY: CM  
ENGINEERED BY: JBW

SHEET: E-2  
SECOND  
FLOOR ELECTRICAL